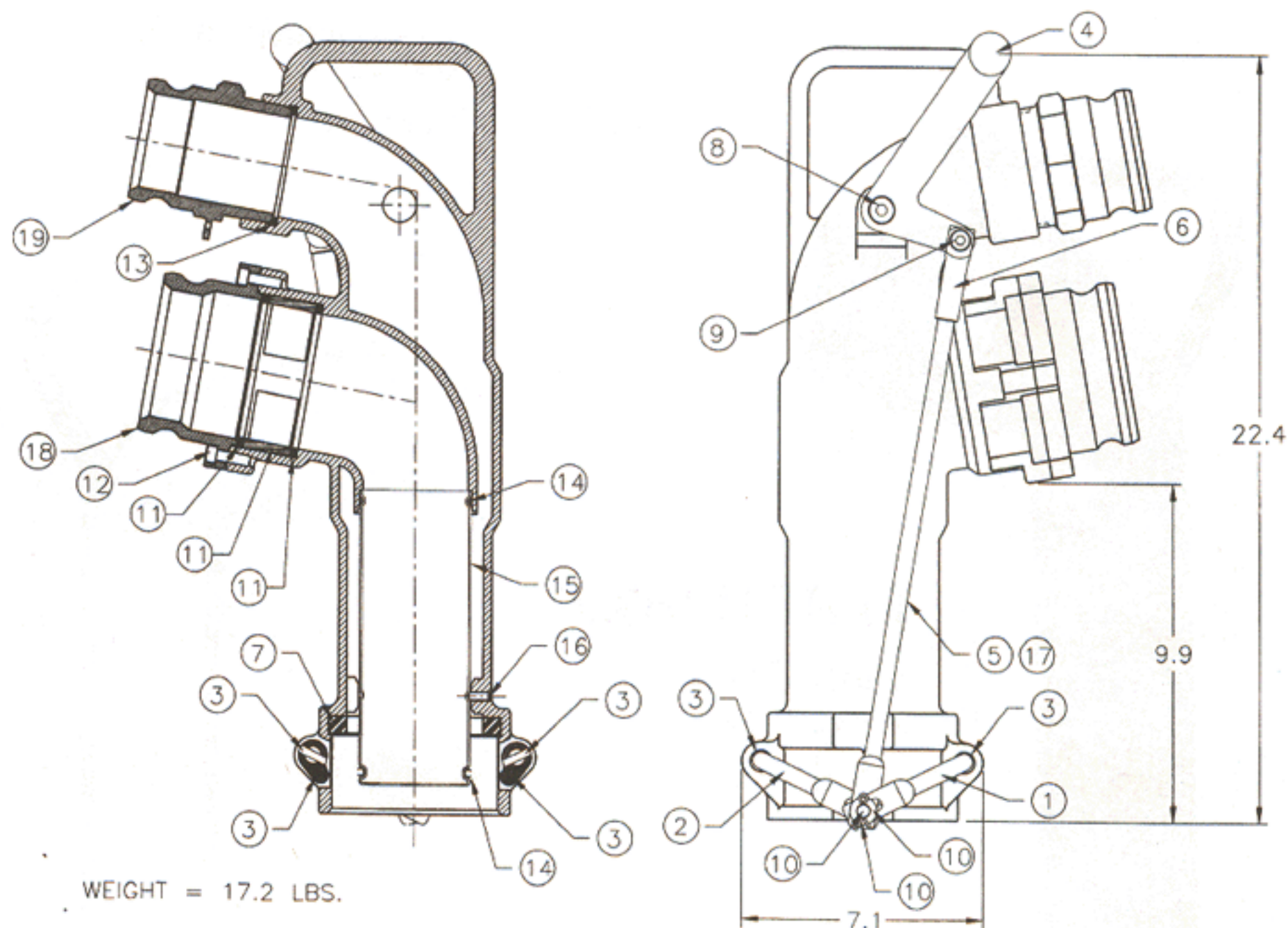




Petroleum Handling Single Point Vapor Recovery



30F Alum Adapter Included



WEIGHT = 17.2 LBS.

PART VR400A

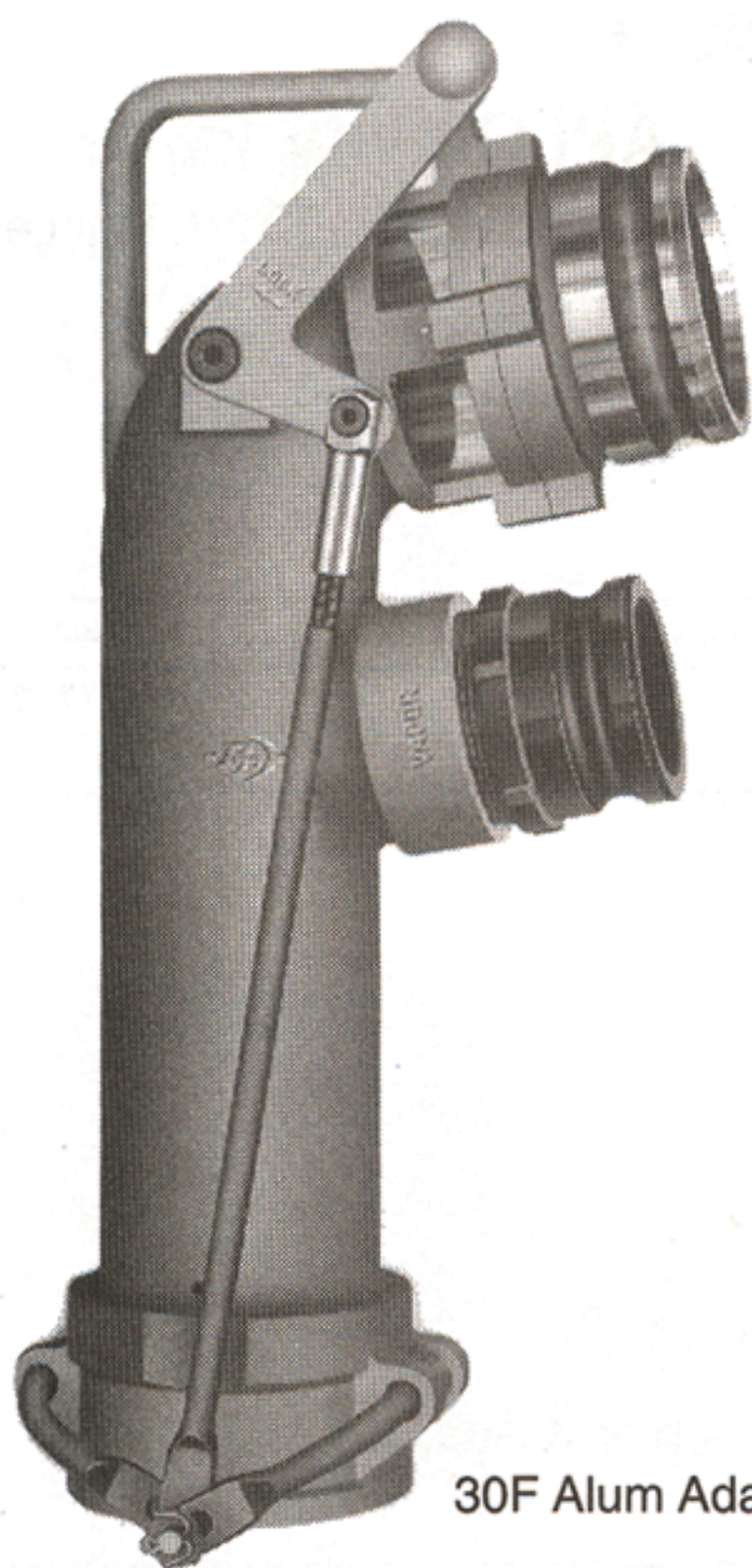
Coaxial Delivery Elbow - Vapor on Top
Product on Bottom

Made in U.S.A.

Item #	Ref #	Description	Price
88000400		VR400A with 4" adapter	\$ 446.62
86004101	1	Cam Arm - Right	\$ 11.13
86004102	2	Cam Arm - Left	\$ 11.13
86004120	3	Cam Assembly Kit	\$ 7.27
86004104	4	Actuation Lever	\$ 16.38
86004124	5	Connecting Link Kit	\$ 25.94
86004106	6	Rod End	\$ 6.91
86004002	7	Coupler Gasket	\$ 2.84
86004108	8	Lever Bolt	\$ 2.32
86004109	9	Rod End Bolt	\$ 1.17
86004121	10	Connecting Link Pin Kit	\$ 2.60
86004123	11	Sight Glass Kit	\$ 12.85
86004122	12	Capscrew Kit	\$ 2.12
5504230	13	B30ASY Gasket	\$ 0.68
88000420	14	VR400A Tube Seal Kit	\$ 7.58
88000406	15	VR400 A Tube	\$ 36.64
88000424	16	Set Screw	\$ 0.95
88004003	17	UVR Connecting Link	\$ 15.40
88004014	18	TF40AF Adapter	\$ 32.60
1000630	19	30F Alum Adapter	\$ 15.34



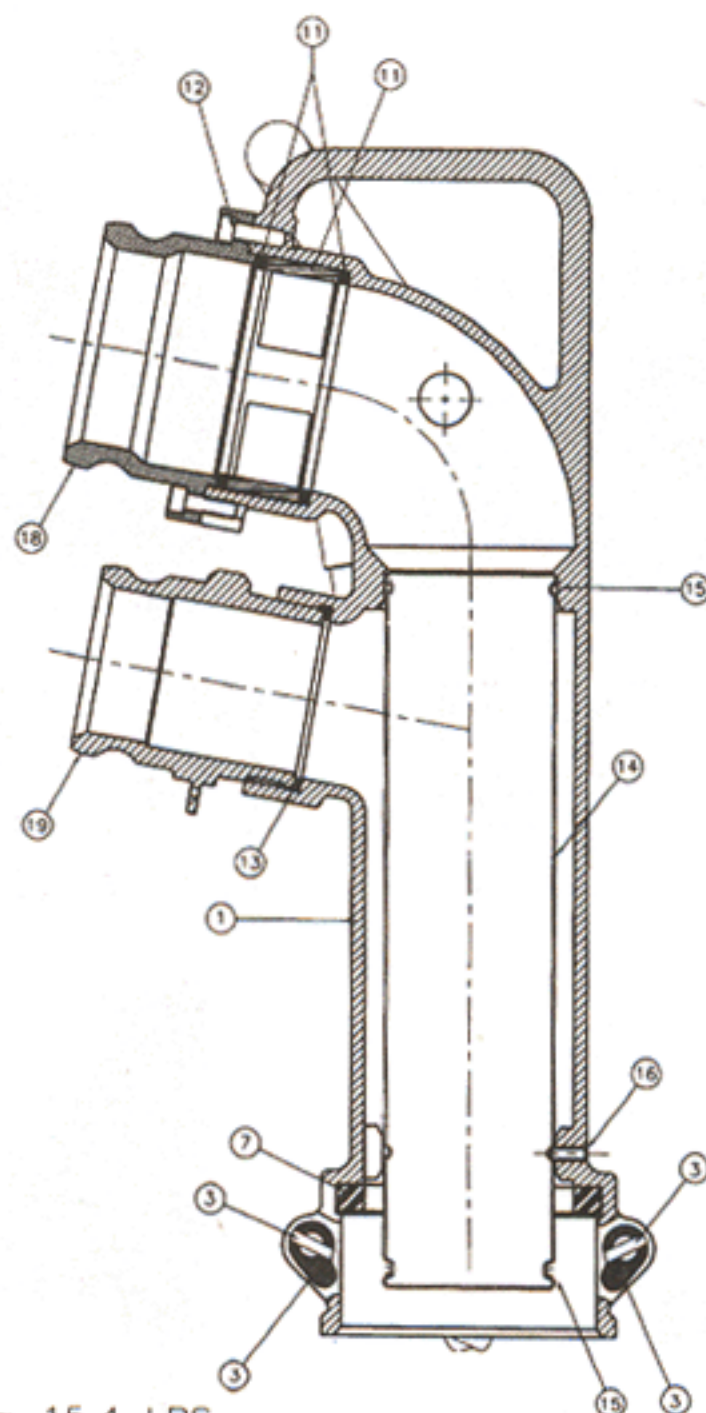
Petroleum Handling Single Point Vapor Recovery



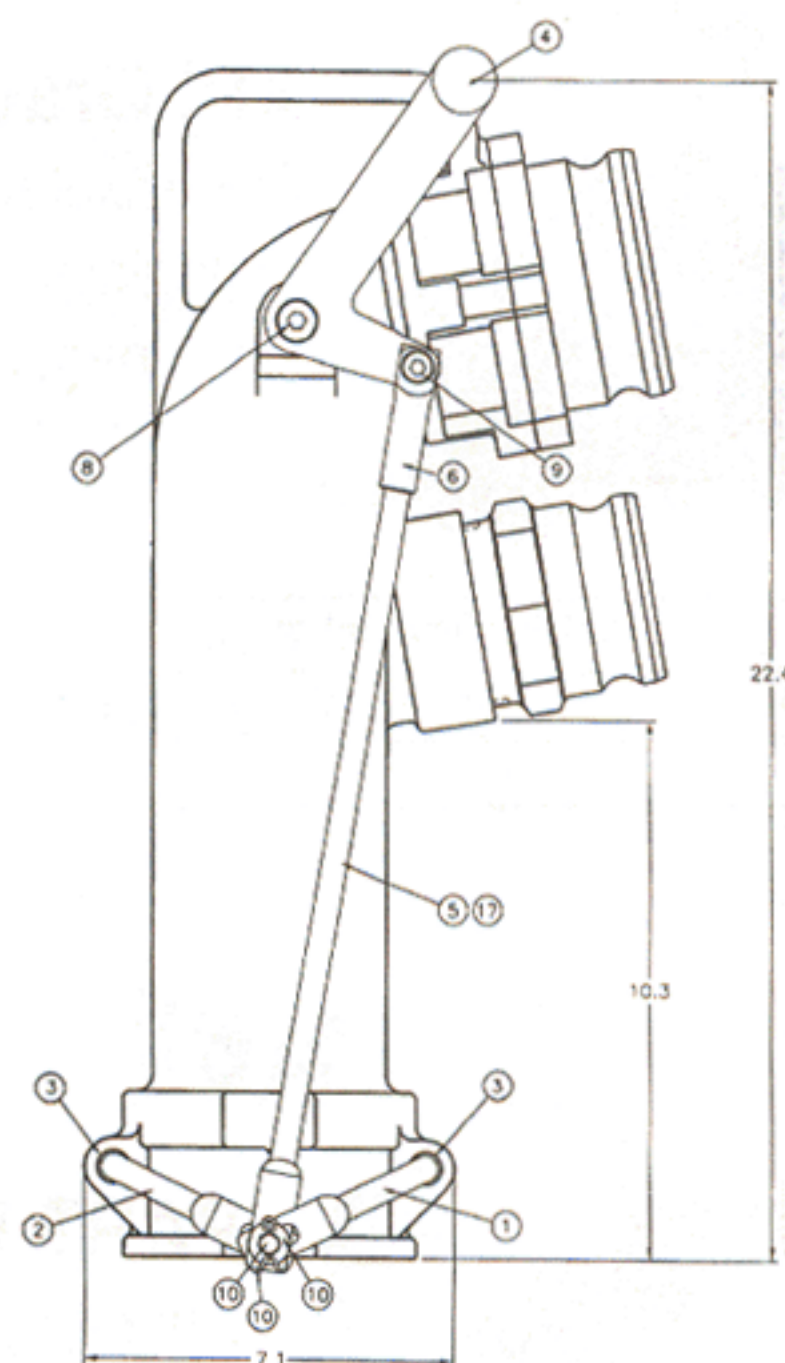
30F Alum Adapter Included

PART UVR400

Coaxial Delivery Elbow - Product on Top
Vapor on Bottom
Made in U.S.A.



WEIGHT = 15.4 LBS.



Item #	Ref #	Description	Price
88004000		UVR400 with 4" adapter	\$ 420.00
88004040C		UVR400 with 4" coupler	\$ 444.99
88004030A		UVR400 with 3" adapter	☎
88004030C		UVR400 with 3" coupler	☎
86004101	1	Cam Arm - Right	\$ 11.13
86004102	2	Cam Arm - Left	\$ 11.13
86004120	3	Cam Assembly Kit	\$ 7.27
86004104	4	Actuation Lever	\$ 16.38
86004124	5	Connecting Link Kit	\$ 25.94
86004106	6	Rod End	\$ 6.91
86004002	7	Coupler Gasket	\$ 2.84
86004108	8	Lever Bolt	\$ 2.32
86004109	9	Rod End Bolt	\$ 1.17
86004121	10	Connecting Link Pin Kit	\$ 2.60
86004123	11	Sight Glass	\$ 12.85
86004122	12	Capscrew	\$ 2.12
5504230	13	B30Asy. Gasket	\$ 0.68
88004002	14	UVR400 Tube	\$ 31.80
88000420	15	UVR400 Tube Seal Kit	\$ 7.58
88000424	16	Set Screw	\$ 0.95
88004003	17	UVR Connecting Link	\$ 15.40
86004014	18	T40AF Adapter	\$ 32.60
1000630	19	30F Alum Adapter	\$ 15.34