

Gauges Sold Separately



### Miniature

Ports .....1/4"  
SCFM .....20



### Compact

Ports .....1/4"-3/8"  
SCFM .....50



### Standard

Ports ....1/4"-3/8"-1/2"-3/4"-1"  
SCFM.... 70 -150 -425

## Filters - Mini, Compact, Modular, Standard

Body Size	Port Size	Poly Bowl	Metal Bowl
Mini	1/4"	4000/56-100	4001
Auto Drain			
Mini	1/4"	4002A	

Body Size	Port Size	Poly Bowl	Metal Bowl
1/4"	1/4"	4006	4007
1/4"	3/8"	4026/56-300	4027/56-302-99

Body Size	Port Size	Poly Bowl	Metal Bowl
3/8"	1/4"	4010A-99	4011A-99
3/8"	3/8"	4020A-99/56-305	4021A-99
3/8"	3/8"		4024A-99
			(w/ auto drain)
1/2"	1/2"	4030/56-308	4031/56-310
1/2"	3/4"	4032	4040

### Hi Flow

1"	3/4"		4041*/56-313
1"	1"		4050/56-314

\*For Auto Drain order 4046  
4096 Manual Drain Kit

### Parts & Accessories

Body Size	5 µm Element	Poly Bowl	Metal Bowl	Bowl O-Ring
Mini	4062	4073	4078	4780
Mounting Bracket & Panel Nut - 4160				

### Specifications

Fluid: Compressed Air  
Maximum Inlet Pressure -  
Transparent Bowl: 150 psig (10.3 bar)  
Metal Bowl: 250 psig (17.2 bar)  
Maximum Temperature -  
Transparent Bowl: 125°F (52°C)  
Metal Bowl: 175°F (79°C)

### Parts & Accessories

Body Size	40 µm Element	5 µm Element	Poly Bowl	Metal Bowl	Mounting Bracket
1/4"	4087	4088	4056	4057	4760

### Semi Auto Drain - 4086

### Specifications

Fluid: Compressed Air  
Maximum Inlet Pressure -  
Transparent Bowl: 150 psig (10.3 bar)  
Metal Bowl: 250 psig (17.2 bar)  
Maximum Temperature -  
Transparent Bowl: 125°F (52°C)  
Metal Bowl: 175°F (79°C)

### Parts & Accessories

Body Size	40 µm Element	5 µm Element	Poly Bowl	Metal Bowl	Mounting Bracket
3/8"	4066A-99	4063A-99	4074A-99	4079A-99	4071A-99
1/2"	4093	4092	4095	4094	4772
1"	4068	4065		4272	4090

Body Size	Bowl O-Ring	Sight Glass	Auto Drain
3/8"	4782	4277A	4070
1/2"	4783		
1"	4781	4278	4046

Auto Drain - 4060  
Manual Drain - 4096

### Specifications

Fluid: Compressed Air  
Maximum Inlet Pressure -  
Transparent Bowl: 150 psig (10.3 bar)  
Metal Bowl: 250 psig (17.2 bar)  
Maximum Temperature -  
Transparent Bowl: 125°F (52°C)  
Metal Bowl: 175°F (79°C)

## Gauges Sold Separately



**Compact**  
Ports ..... 1/4"-3/8"  
Flow SCFM ..... 20



**Standard**  
Ports ..... 3/8"-1/2"  
Flow SCFM ..... 75 150



**Drip-Legs**  
Ports ..... 1/2"

### Coalescing Filters

Body Size	Port Size	Poly Bowl	Metal Bowl
1/4"	1/4"	4017	4016
1/4"	3/8"	4019	4018

Body Size	Port Size	Poly Bowl	Metal Bowl
3/8"	1/4"	4012A-99	
3/8"	3/8"	4022A-99	
1/2"	3/8"	4038/56-204	4023
1/2"	1/2"	4033/56-208	4037

Port Size	Poly Bowl	Metal Bowl
1/2"	4034	4035

### Parts & Accessories

Body Size	.01 µm Element	Poly Bowl	Metal Bowl	Mounting Bracket	Semi Auto Drain
1/4"	4089	4056	4057	4760	4086

### Parts & Accessories

Body Size	.01µm Element	Poly Bowl	Metal Bowl	Mounting Bracket	Rplc. Sight Glass	Bowl O-Ring
1/2"	4097	4095	4094	4772	4278	4783

### Parts & Accessories

Port Size	Poly Bowl	Metal Bowl	Auto Drain
1/2"	4074A-99	4079A-99	4060

### Specifications

Fluid: Compressed Air  
Maximum Inlet Pressure –  
Transparent Bowl: 150 psig (10.3 bar)  
Metal Bowl: 250 psig (17.2 bar)  
Maximum Temperature –  
Transparent Bowl: 125°F (52°C)  
Metal Bowl: 150°F (66°C)

### Specifications

Fluid: Compressed Air  
Maximum Inlet Pressure –  
Transparent Bowl: 150 psig (10.3 bar)  
Metal Bowl: 250 psig (17.2 bar)  
Maximum Temperature –  
Transparent Bowl: 125°F (52°C)  
Metal Bowl: 150°F (66°C)

### Specifications

Fluid: Compressed Air  
Maximum Inlet Pressure –  
Transparent Bowl: 150 psig (10.3 bar)  
Metal Bowl: 250 psig (17.2 bar)  
Maximum Temperature –  
Transparent Bowl: 125°F (52°C)  
Metal Bowl: 150°F (66°C)



**Miniature**  
Ports ..... 1/4"  
Flow SCFM ..... 20



**Compact**  
Ports ..... 1/4"-3/8"  
Flow SCFM ..... 50



**Standard**  
Ports ..... 1/4"-3/8"-1/2"-3/4"-1"  
SCFM ..... 70 -150 -425

### Regulators

Body Size	Port Size	Without Gauge	With Gauge
Mini	1/4"	4100/4102*	4100D/56-110

Body Size	Port Size	Without Gauge
1/4"	1/4"	4119
1/4"	3/8"	4118

Body Size	Port Size	Without Gauge
3/8"	1/4"	4115A-99/56-341-99 4116-99 w/ panel nut
3/8"	3/8"	4125A-99/56-355 4126-99 w/ panel nut
1/2"	1/2"	4135/56-344
1/2"	3/4"	4145
1"	3/4"	4141
1"	1"	4155/56-346

### Parts & Accessories

Body Size	Mounting Bracket	Panel Nut	Reg. Repair Kit	Rplc. Knob
Mini	4160	4161	4166	4790

### Parts & Accessories

Body Size	Mounting Bracket w/ Panel	Panel Nut	Reg. Repair Kit	Rplc. Knob
1/4"	4760	4763	4757	4791

### Parts & Accessories

Body Size	Mounting Bracket w/Panel	Panel Nut	Reg. Repair Kit	Rplc. Knob
3/8"	4162A-99	4778	4167A	4792
1/2"	4772	4773	4776	4793
1"	4165		4169	Non-Rplc

\* Non-Repairable Regulator

### Specifications

Fluid: Compressed Air  
Maximum Inlet Pressure: 300 psig  
Temperature Range –  
Mini: 0° to 150°F  
All Others: 0° to 175°F  
Gauge Port: 2-1/8" NPT (full flow)  
Outlet Range: 5 - 125 psi

### Specifications

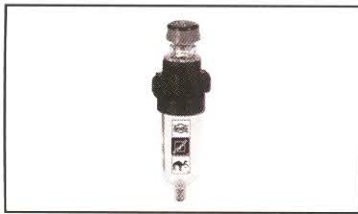
Fluid: Compressed Air  
Maximum Inlet Pressure: 300 psig  
Temperature Range: 0° to 150°F  
Gauge Port: 2-1/8" NPT (full flow)  
Outlet Range: 5 - 125 psi

### Specifications

Fluid: Compressed Air  
Maximum Inlet Pressure: 300 psig  
Temperature Range: 0° to 175°F  
Gauge Port: 2-1/4" NPT (full flow)  
Outlet Range: 5 - 125 psi

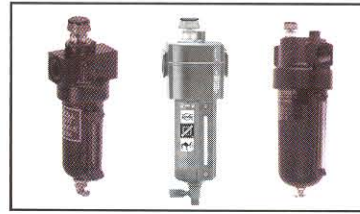


Gauges Sold Separately



### Miniature

Ports .....1/4"  
SCFM.....5



### Standard

Ports .....1/4"-3/8"-1/2"-3/4"-1"  
SCFM..... 35 -150 -425

## Lubricator - Microfog

Body Size	Port Size	Poly Bowl
Mini	1/4"	4200/56-120

### Parts & Accessories

Body Size	Poly Bowl	Metal Bowl	Mount. Bracket	Seal Kit	Fill Plug	Bowl O-Ring
Mini	4264	4269	4160	4171	4794	4780

### Specifications

Fluid: Compressed Air  
Maximum Inlet Pressure –  
Transparent Bowl: 150 psig  
Metal Bowl: 250 psig  
Maximum Temperature –  
Transparent Bowl: 125°F  
Metal Bowl: 175°F



### Compact

Ports .....1/4"-3/8"  
SCFM.....50

Body Size	Port Size	Poly Bowl	Metal Bowl
3/8"	1/4"	4215A-99/56-376	4214A-99
3/8"	3/8"	4225A-99/56-374	4226A-99
1/2"	3/8"	4219	4218
1/2"	1/2"	4235/56-378	4236/56-380
1/2"	3/4"	4245	4246
1"	1"		4255

### Parts & Accessories

Body Size	Poly Bowl	Metal Bowl	Mount. Bracket	Panel Nut	Adj. Dome	Seal Kit	Fill Plug	Bowl O-Ring
3/8"	4265A-99	4269	4071A	N/A	4283		4795	4782
1/2"	4285	4286	4772	4773	4283	4284	4796	4783
1"		4272	4090	N/A	4283		4797	4781

### Specifications

Fluid: Compressed Air  
Maximum Inlet Pressure –  
Transparent Bowl: 150 psig  
Metal Bowl: 250 psig  
Maximum Temperature –  
Transparent Bowl: 125°F  
Metal Bowl: 175°F



### Standard

Ports .....1/4"-3/8"-1/2"-3/4"-1"  
SCFM..... 35 -150 -425

## Lubricator - Oil Fog

Body Size	Port Size	Poly Bowl	Metal Bowl
1/4"	1/4"	4232	4233
1/4"	3/8"	4239	4238

### Parts & Accessories

Body Size	Poly Bowl	Metal Bowl	Mount. Bracket	Panel Nut	Adj. Dome	Fill Plug
1/4"	4058	4059	4760	4763	4282	4798

### Specifications

Fluid: Compressed Air  
Maximum Inlet Pressure –  
Transparent Bowl: 150 psig  
Metal Bowl: 250 psig  
Maximum Temperature –  
Transparent Bowl: 125°F  
Metal Bowl: 175°F

Body Size	Port Size	Poly Bowl	Metal Bowl
3/8"	1/4"	4210A-99	4211A-99
3/8"	3/8"	4220A-99	4221A-99
1/2"	1/2"	4230	4231
1/2"	3/4"	4240	4241
1"	1"	4242	4250

### Parts & Accessories

Body Size	Poly Bowl	Metal Bowl	Mount. Bracket	Adj. Dome	Fill Plug	Bowl O-Ring	Drain Kit
3/8"	4265A-99	4270A-99	4071A-99	4282	4795	4782	
1/2"	4285	4286	4772	4282	4796	4783	
1"		4272	4090	4282	4797	4781	4096

### Specifications

Fluid: Compressed Air  
Maximum Inlet Pressure –  
Transparent Bowl: 150 psig  
Metal Bowl: 250 psig  
Maximum Temperature –  
Transparent Bowl: 125°F  
Metal Bowl: 175°F

Gauges Sold Separately.



### Miniature

Ports .....1/4"  
SCFM .....20



### Compact

Ports .....1/4"-3/8"  
SCFM.....50



### Standard

Ports .....1/4"-3/8"-1/2"-3/4"-1"  
SCFM..... 75 -150

## Piggyback Filter/Regulator

Body Size	Port Size	Poly Bowl
Mini	1/4"	4300/56-357

### Parts & Accessories

Body Size	40 µm Element	Poly Bowl	Metal Bowl	Mounting Bracket	Reg. Repair Kit
1/4"	4062	4073	4078*	4160	4166

Body Size	Rplc. Knob	Bowl O-Ring
1/4"	4790	4780

\*Replacement metal bowl has an auto drain and no sight glass.

### Specifications

Fluid: Compressed Air  
Maximum Inlet Pressure –  
Transparent Bowl: 150 psig  
Metal Bowl: 250 psig  
Maximum Temperature –  
Transparent Bowl: 125°F  
Metal Bowl: 175°F  
Gauge Port: 2-1/8" NPT (full flow)  
Outlet Range: 5 - 125 psi

Body Size	Port Size	Poly Bowl	Metal Bowl
1/4"	1/4"	4312	4314
1/4"	3/8"	4317	4316

### Parts & Accessories

Body Size	40 µm Element	Poly Bowl	Metal Bowl	Mounting Bracket	Reg. Repair Kit
1/4"	4087	4056	4057	4760	4757

Body Size	Rplc. Knob
1/4"	4791

### Specifications

Fluid: Compressed air  
Maximum Inlet Pressure –  
Transparent Bowl: 150 psig  
Metal Bowl: 250 psig  
Maximum Temperature –  
Transparent Bowl: 125°F  
Metal Bowl: 175°F  
Gauge Port: 2-1/8" NPT (full flow)  
Outlet Range: 5 - 125 psi

Body Size	Port Size	Poly Bowl	Metal Bowl
3/8"	1/4"	4310A-99	4311A-99
3/8"	3/8"	4320A-99	4321A-99/56-355
1/2"	1/2"	4330/56-355	4331
1/2"	3/4"	4340	4341

### Parts & Accessories

Body Size	40 µm Element	Poly Bowl	Metal Bowl	Mounting Bracket	Reg. Repair Kit
3/8"	4066A	4074A-99	4079A-99	4162A-99	4167A
1/2"	4093	4095	4094	4772	4776

Body Size	Rplc. Knob	Bowl O-Ring
3/8"	4792	4782
1/2"	4793	4783

### Specifications

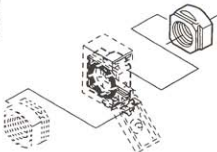
Fluid: Compressed air  
Maximum Inlet Pressure –  
Transparent Bowl: 150 psig  
Metal Bowl: 250 psig  
Maximum Temperature –  
Transparent Bowl: 125°F  
Metal Bowl: 175°F  
Gauge Port: 2-1/4" NPT (full flow)  
Outlet Range: 5 - 125 psi

## Accessories and Components for New Modular 1/4, 3/8 and 1/2" Body Size FRLs

Dimensions in inches (mm)

### Quickmount Pipe Adapters

Port Size and Thread	AmFlo No. (1 pack)	Use with the Quickclamp to provide threaded connections to the system piping.
Compact		Each pipe adapter adds:
1/4" PTF	<b>4764</b>	.063" (15.9 mm) to the overall length of a combination unit.
3/8" PTF	<b>4765</b>	
Modular 1/2" Body Style		.71" (18 mm) to the overall length of a combination unit.
1/4" PTF	<b>4767</b>	
3/8" PTF	<b>4755</b>	
1/2" PTF	<b>4756</b>	
3/4" PTF	<b>4768</b>	



### Quickclamp Wall Mounting Bracket

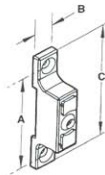
Use with the preceding Quickclamp to provide secure mounting to a wall, machine panel or other flat surface.

Compact Style **4759**

Use 3/16" (5mm) screws to mount bracket to wall.

Modular 1/2" (1mm) body size **4770**

Use 7/32" (6 mm) screws to mount bracket to wall.



	A	B	C
<b>Compact</b>	2/32(59)	0.55 (14)	2.91 (74)
<b>Modular</b>	3.25 (83)	0.95 (24)	4.0 (102)

### Quickclamp

**AmFlo Number**

**Compact Style 4761**

**Modular 1/2 Body 4769**

Maximum Pressure: 250 psig (17 bar)

Maximum Temperature:

Compact 150°F (65°C)

Modular 175°F (79°C)

Use with all compact and 1/2" modular products to provide modular installation capability. Flanges on the products slide into V grooves in the Quickclamp. Two face-sealing o-rings in the Quickclamp provide a positive seal when the clamp is closed and the captive screw is tightened.

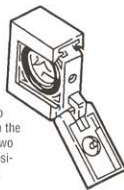
A Quickclamp adds:

#### Compact

0.26" (5.5 mm) to the overall length of a combination unit. Screw with a 5/32" (4mm) hex or a T25 Torx wrench.

#### Modular

0.54" (13.6 mm) to the overall length of a combination unit. Screw with a 5/32" (4 mm) hex or a T25 Torx wrench.



**4162A-99**

### Quickclamp and Wall Mounting Bracket

**AmFlo Number:**

**Compact Style 4762**

**Modular 1/2 Body 4771**

See preceding paragraphs for descriptions and dimensions.

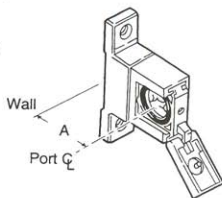
#### Compact

Use 3/16" (6mm) screws to mount bracket to wall.

#### Modular

Use 7/32" (6mm) screws to mount bracket to wall.

Compact -  
1/50" (38)  
Modular - 2.00"  
(51)



### Wall Mounting Bracket

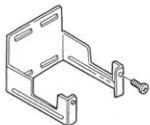
Use to secure compact and 1/2" modular single units.

**AmFlo Numbers:**

Compact style **4760**

Modular 1/2" body style **4772**

Use 3/16" (5mm) screws to mount bracket to wall.



### Panel Nut

Use to panel mount new modular 1/2" reg. and 1/2" combinations.

**AmFlo Number:**

**4763**

(Plastic) Compact

**4773**

(Zinc) Modular

