

Gauges Sold Separately


Compact

 Ports 1/4"-3/8"
 Flow SCFM 20

Standard

 Ports 3/8"-1/2"
 Flow SCFM 75 150

Drip-Legs

Ports 1/2"

Coalescing Filters

Body Size	Port Size	Poly Bowl	Metal Bowl
1/4"	1/4"	4017	4016
1/4"	3/8"	4019	4018

Body Size	Port Size	Poly Bowl	Metal Bowl
3/8"	1/4"	4012A-99	
3/8"	3/8"	4022A-99	
1/2"	3/8"	4038/56-204	4023
1/2"	1/2"	4033/56-208	4037

Port Size	Poly Bowl	Metal Bowl
1/2"	4034	4035

Parts & Accessories

Body Size	.01 µm Element	Poly Bowl	Metal Bowl	Mounting Bracket	Semi Auto Drain
1/4"	4089	4056	4057	4760	4086

Parts & Accessories

Body Size	.01µm Element	Poly Bowl	Metal Bowl	Mounting Bracket	Rplc. Sight Glass	O-Ring
1/2"	4097	4095	4094	4772	4278	4783

Parts & Accessories

Port Size	Poly Bowl	Metal Bowl	Auto Drain
1/2"	4074A-99	4079A-99	4060

Specifications

 Fluid: Compressed Air
 Maximum Inlet Pressure –
 Transparent Bowl: 150 psig (10.3 bar)
 Metal Bowl: 250 psig (17.2 bar)
 Maximum Temperature –
 Transparent Bowl: 125°F (52°C)
 Metal Bowl: 150°F (66°C)

Specifications

 Fluid: Compressed Air
 Maximum Inlet Pressure –
 Transparent Bowl: 150 psig (10.3 bar)
 Metal Bowl: 250 psig (17.2 bar)
 Maximum Temperature –
 Transparent Bowl: 125°F (52°C)
 Metal Bowl: 150°F (66°C)

Specifications

 Fluid: Compressed Air
 Maximum Inlet Pressure –
 Transparent Bowl: 150 psig (10.3 bar)
 Metal Bowl: 250 psig (17.2 bar)
 Maximum Temperature –
 Transparent Bowl: 125°F (52°C)
 Metal Bowl: 150°F (66°C)

Miniature

 Ports 1/4"
 Flow SCFM 20

Compact

 Ports 1/4"-3/8"
 Flow SCFM 50

Standard

 Ports 1/4"-3/8"-1/2"-3/4"-1"
 SCFM 70 -150 -425

Regulators

Body Size	Port Size	Without Gauge	With Gauge
Mini	1/4"	4100/4102*	4100D/56-110

Body Size	Port Size	Without Gauge
1/4"	1/4"	4119
1/4"	3/8"	4118

Body Size	Port Size	Without Gauge
3/8"	1/4"	4115A-99/56-341-99 4116-99 w/ panel nut
3/8"	3/8"	4125A-99/56-355 4126-99 w/ panel nut
1/2"	1/2"	4135/56-344
1/2"	3/4"	4145
1"	3/4"	4141
1"	1"	4155/56-346

Parts & Accessories

Body Size	Mounting Bracket	Panel Nut	Reg. Repair Kit	Rplc. Knob
Mini	4160	4161	4166	4790

Parts & Accessories

Body Size	Mounting Bracket w/ Panel	Panel Nut	Reg. Repair Kit	Rplc. Knob
1/4"	4760	4763	4757	4791

Parts & Accessories

Body Size	Mounting Bracket w/Panel	Panel Nut	Reg. Repair Kit	Rplc. Knob
3/8"	4162A-99	4778	4167A	4792
1/2"	4772	4773	4776	4793
1"	4165		4169	Non-Rplc

* Non-Repairable Regulator

Specifications

 Fluid: Compressed Air
 Maximum Inlet Pressure: 300 psig
 Temperature Range –
 Mini: 0° to 150°F
 All Others: 0° to 175°F
 Gauge Port: 2-1/8" NPT (full flow)
 Outlet Range: 5 - 125 psi

Specifications

 Fluid: Compressed Air
 Maximum Inlet Pressure: 300 psig
 Temperature Range: 0° to 150° F
 Gauge Port: 2-1/8" NPT (full flow)
 Outlet Range: 5 - 125 psi

Specifications

 Fluid: Compressed Air
 Maximum Inlet Pressure: 300 psig
 Temperature Range: 0° to 175° F
 Gauge Port: 2-1/4" NPT (full flow)
 Outlet Range: 5 - 125 psi


Gauges Sold Separately.



Miniature

Ports1/4"
SCFM20



Compact

Ports1/4"-3/8"
SCFM.....50



Standard

Ports1/4"-3/8"-1/2"-3/4"-1"
SCFM..... 75 -150

Piggyback Filter/Regulator

Body Size	Port Size	Poly Bowl
Mini	1/4"	4300/56-357

Parts & Accessories

Body Size	40 µm Element	Poly Bowl	Metal Bowl	Mounting Bracket	Reg. Repair Kit
1/4"	4062	4073	4078*	4160	4166

Body Size	Rplc. Knob	Bowl O-Ring
1/4"	4790	4780

*Replacement metal bowl has an auto drain and no sight glass.

Specifications

Fluid: Compressed Air
Maximum Inlet Pressure –
Transparent Bowl: 150 psig
Metal Bowl: 250 psig
Maximum Temperature –
Transparent Bowl: 125°F
Metal Bowl: 175°F
Gauge Port: 2-1/8" NPT (full flow)
Outlet Range: 5 - 125 psi

Body Size	Port Size	Poly Bowl	Metal Bowl
1/4"	1/4"	4312	4314
1/4"	3/8"	4317	4316

Parts & Accessories

Body Size	40 µm Element	Poly Bowl	Metal Bowl	Mounting Bracket	Reg. Repair Kit
1/4"	4087	4056	4057	4760	4757

Body Size	Rplc. Knob
1/4"	4791

Specifications

Fluid: Compressed air
Maximum Inlet Pressure –
Transparent Bowl: 150 psig
Metal Bowl: 250 psig
Maximum Temperature –
Transparent Bowl: 125°F
Metal Bowl: 175°F
Gauge Port: 2-1/8" NPT (full flow)
Outlet Range: 5 - 125 psi

Body Size	Port Size	Poly Bowl	Metal Bowl
3/8"	1/4"	4310A-99	4311A-99
3/8"	3/8"	4320A-99	4321A-99/56-355
1/2"	1/2"	4330/56-355	4331
1/2"	3/4"	4340	4341

Parts & Accessories

Body Size	40 µm Element	Poly Bowl	Metal Bowl	Mounting Bracket	Reg. Repair Kit
3/8"	4066A	4074A-99	4079A-99	4162A-99	4167A
1/2"	4093	4095	4094	4772	4776

Body Size	Rplc. Knob	Bowl O-Ring
3/8"	4792	4782
1/2"	4793	4783

Specifications

Fluid: Compressed air
Maximum Inlet Pressure –
Transparent Bowl: 150 psig
Metal Bowl: 250 psig
Maximum Temperature –
Transparent Bowl: 125°F
Metal Bowl: 175°F
Gauge Port: 2-1/4" NPT (full flow)
Outlet Range: 5 - 125 psi

Filters, Regulators, Lubricators

Gauges Sold Separately.



Compact

Ports1/4"-3/8"
SCFM50



Standard

Ports1/4"-3/8"-1/2"-3/4"
SCFM 75 -150

Regulator/Filter - Lubricator

Body Size	Port Size	Poly Bowl	Metal Bowl
1/4"	1/4"	4709	4712

Body Size	Port Size	Poly Bowl	Metal Bowl
3/8"	1/4"	4710A-99	4711A-99
3/8"	3/8"	4720A-99	4721A-99
1/2"	1/2"	4730	4731
1/2"	3/4"	4740	4741

Parts & Accessories

Body Size	40 µm Element	Mounting Bracket	Reg. Repair Kit	Rplc. Knob	Fill Plug
1/4"	4087	4760	4757	4791	4798

Body Size	FILTER		LUBRICATOR	
	Poly Bowl	Metal Bowl	Poly Bowl	Metal Bowl
1/4"	4056	4057	4058	4059

Specifications

Fluid: Compressed Air
Maximum Inlet Pressure –
Transparent Bowl: 150 psig
Metal Bowl: 250 psig
Maximum Temperature –
Transparent Bowl: 125°F
Metal Bowl: 175°F
Gauge Port: 2-1/8" NPT (full flow)
Outlet Range: 5 - 125 psi

Parts & Accessories

Port Size	40 µm Element	Mounting Bracket	Reg. Repair Kit	Rplc. Knob	Bowl O-Ring	Fill Plug
3/8"	4066A-99	4162A-99	4167A	4792	4782	4795
1/2"	4093	4770	4776	4793	4783	4796

Port Size	FILTER		LUBRICATOR	
	Poly Bowl	Metal Bowl	Poly Bowl	Metal Bowl
3/8"	4074A-99	4079A-99	4265A-99	4269
1/2"	4095	4094	4285	4286

Specifications

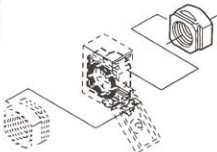
Fluid: Compressed Air
Maximum Inlet Pressure –
Transparent Bowl: 150 psig
Metal Bowl: 250 psig
Maximum Temperature –
Transparent Bowl: 125°F
Metal Bowl: 175°F
Gauge Port: 2-1/8" NPT (full flow)
Outlet Range: 5 - 125 psi

Accessories and Components for New Modular 1/4, 3/8 and 1/2" Body Size FRLs

Dimensions in inches (mm)

Quickmount Pipe Adapters

Port Size and Thread	AmFlo No. (1 pack)	Use with the Quickclamp to provide threaded connections to the system piping.
Compact		Each pipe adapter adds:
1/4" PTF	4764	.063" (15.9 mm) to the overall length of a combination unit.
3/8" PTF	4765	
Modular 1/2" Body Style		.71" (18 mm) to the overall length of a combination unit.
1/4" PTF	4767	
3/8" PTF	4755	
1/2" PTF	4756	
3/4" PTF	4768	



Quickclamp Wall Mounting Bracket

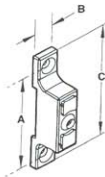
Use with the preceding Quickclamp to provide secure mounting to a wall, machine panel or other flat surface.

Compact Style **4759**

Use 3/16" (5mm) screws to mount bracket to wall.

Modular 1/2" (1mm) body size **4770**

Use 7/32" (6 mm) screws to mount bracket to wall.



	A	B	C
Compact	2/32(59)	0.55 (14)	2.91 (74)
Modular	3.25 (83)	0.95 (24)	4.0 (102)

Quickclamp

AmFlo Number

Compact Style 4761

Modular 1/2 Body 4769

Maximum Pressure: 250 psig (17 bar)

Maximum Temperature:

Compact 150°F (65°C)

Modular 175°F (79°C)

Use with all compact and 1/2" modular products to provide modular installation capability. Flanges on the products slide into V grooves in the Quickclamp. Two face-sealing o-rings in the Quickclamp provide a positive seal when the clamp is closed and the captive screw is tightened.

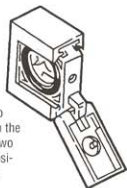
A Quickclamp adds:

Compact

0.26" (5.5 mm) to the overall length of a combination unit. Screw with a 5/32" (4mm) hex or a T25 Torx wrench.

Modular

0.54" (13.6 mm) to the overall length of a combination unit. Screw with a 5/32" (4 mm) hex or a T25 Torx wrench.



4162A-99

Quickclamp and Wall Mounting Bracket

AmFlo Number:

Compact Style 4762

Modular 1/2 Body 4771

See preceding paragraphs for descriptions and dimensions.

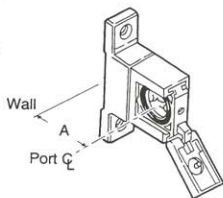
Compact

Use 3/16" (6mm) screws to mount bracket to wall.

Modular

Use 7/32" (6mm) screws to mount bracket to wall.

Compact -
1/50" (38)
Modular - 2.00"
(51)



Panel Nut

Use to panel mount new modular 1/2" reg. and 1/2" combinations.

AmFlo Number:

4763

(Plastic) Compact

4773

(Zinc) Modular



Wall Mounting Bracket

Use to secure compact and 1/2" modular single units.

AmFlo Numbers:

Compact style **4760**

Modular 1/2" body style **4772**

Use 3/16" (5mm) screws to mount bracket to wall.

