

Filters, Regulators, Lubricators

Gauges Sold Separately.



Miniature

Ports1/4"
SCFM.....5



Compact

Ports1/4"
SCFM.....50



Standard

Ports1/4"-3/8"-1/2"-3/4"-1"
SCFM.... 75 -150 425

Regulator - Filter - Lubricator

Body Size	Port Size	Poly Bowl
Mini	1/4"	4405

Parts & Accessories

Body Size	40 µm Element	5 µm Element	Reg. Repair Kit	Rplc Knob	Bowl O-Ring	Fill Plug
Mini	4066A-99	4063A-99	4166	4790	4780	4794

Body Size	FILTERS			LUBRICATOR	
	Poly Bowl	Metal Bowl	Poly Bowl	Metal Bowl	Bowl
Mini	4073	4078	4264	4269	

Specifications

Fluid: Compressed Air
Maximum Inlet Pressure –
Transparent Bowl: 150 psig
Metal Bowl: 250 psig
Maximum Temperature –
Transparent Bowl: 125°F
Metal Bowl: 175°F
Gauge Port: 2-1/8" NPT (full flow)
Outlet Range: 5 - 125 psi

Body Size	Port Size	Poly Bowl	Metal Bowl
1/4"	1/4"	4409	4412

Parts & Accessories

Body Size	40 µm Element	Mounting Bracket	Fill Plug	Reg. Repair Kit
1/4"	4087	4759	4798	4757

Body Size	FILTERS			LUBRICATOR	
	Poly Bowl	Metal Bowl	Poly Bowl	Metal Bowl	Bowl
1/4"	4056	4057	4058	4059	

Specifications

Fluid: Compressed Air
Maximum Inlet Pressure –
Transparent Bowl: 150 psig
Metal Bowl: 250 psig
Maximum Temperature –
Transparent Bowl: 125°F
Metal Bowl: 175°F
Gauge Port: 2-1/8" NPT (full flow)
Outlet Range: 5 - 125 psi

Body Size	Port Size	Poly Bowl	Metal Bowl
3/8"	1/4"	4410A-99	4411A-99
3/8"	3/8"	4420A-99	4421A-99
1/2"	1/2"	4430	4431
1/2"	3/4"	4440	4441
1"	1"		4450

Parts & Accessories

Body Size	40 µm Element	5 µm Element	Mount. Bracket	Reg. Repair Kit	Fill Plug	Rplc Knob
-----------	---------------	--------------	----------------	-----------------	-----------	-----------

3/8"	4066A-99	4063A-99	4071A-99	4167A	4795	4782 4792
1/2"	4093	4092	4770	4776	4796	4783 4793
1"	4068	4065	4165	4169	4797	4781

Body Size	FILTERS			LUBRICATOR	
	Poly Bowl	Metal Bowl	Poly Bowl	Metal Bowl	Bowl
3/8"	4074A-99	4079A-99	4265A-99	4269	
1/2"	4095	4094	4285	4286	
1"		4272		4272	

Specifications

Fluid: Compressed Air
Maximum Inlet Pressure –
Transparent Bowl: 150 psig
Metal Bowl: 250 psig
Maximum Temperature –
Transparent Bowl: 125°F
Metal Bowl: 175°F
Gauge Port: 2-1/4" NPT (full flow)
Outlet Range: 5 - 125 psi

Gauges Sold Separately.



Compact

Ports1/4"
SCFM 50



Standard

Ports1/4"-3/8"-1/2"-3/4"
SCFM..... 75 -150

Combination Units Filter - Regulator

Body Size	Port Size	Poly Bowl	Metal Bowl
1/4"	1/4"	4512	4513

Parts & Accessories

Body Size	40 µm Element	Poly Bowl	Metal Bowl	Mounting Bracket	Reg. Repair Kit	Rplc. Knob
1/4"	4087	4056	4057	4759	4757	4791

Specifications

Fluid: Compressed Air
Maximum Inlet Pressure – Transparent Bowl: 150 psig
Metal Bowl: 250 psig
Maximum Temperature – Transparent Bowl: 125°F
Metal Bowl: 175°F
Gauge Port: 2-1/8" NPT (full flow)
Outlet Range: 5 - 125 psi

Body Size	Port Size	Poly Bowl	Metal Bowl
3/8"	1/4"	4510A-99	
3/8"	3/8"	4520A-99	
1/2"	1/2"	4530	4531
1/2"	3/4"	4540	4541

Parts & Accessories

Body Size	40 µm Element	Poly Bowl	Metal Bowl	Mounting Bracket	Reg. Repair Kit	Bowl O-Ring	Rplc. Knob
3/8"	4060A	4074A-99	4079A-99	4071A-99	4167A	4782	4792
1/2"	4093	4095	4094	4770	4776	4783	4793

Specifications

Fluid: Compressed Air
Maximum Inlet Pressure – Transparent Bowl: 150 psig
Metal Bowl: 250 psig
Maximum Temperature – Transparent Bowl: 125°F
Metal Bowl: 175°F
Gauge Port: 2-1/4" NPT (full flow)
Outlet Range: 5 - 125 psi



Compact

Ports1/4"
SCFM 50



Standard

Ports3/8"-1/2"-3/4"
SCFM..... 75 -150

Combination Regulator - Lubricator

Body Size	Port Size	Poly Bowl	Metal Bowl
1/4"	1/4"	4609	4612

Parts & Accessories

Body Size	40 µm Element	Poly Bowl	Metal Bowl	Mounting Bracket	Reg. Repair Kit	Rplc. Knob	Fill Plug
1/4"	4087	4056	4057	4759	4757	4791	4798

Specifications

Fluid: Compressed Air
Maximum Inlet Pressure – Transparent Bowl: 150 psig
Metal Bowl: 250 psig
Maximum Temperature – Transparent Bowl: 125°F
Metal Bowl: 175°F
Gauge Port: 2-1/8" NPT (full flow)
Outlet Range: 5 - 125 psi

Body Size	Port Size	Poly Bowl	Metal Bowl
3/8"	3/8"	4620A-99	4621A-99
1/2"	1/2"	4630	
1/2"	3/4"	4640	4641

Parts & Accessories

Body Size	40 µm Element	Poly Bowl	Metal Bowl	Mounting Bracket	Reg. Repair Kit	Body Size	Rplc. Knob	Bowl O-Ring
-----------	---------------	-----------	------------	------------------	-----------------	-----------	------------	-------------

3/8"	4066A-99	4265A-99	4269	4162A	4167A	3/8"	4792	4795	4782
1/2"	4093	4285	4286	4770	4776	1/2"	4793	4796	4783

Specifications

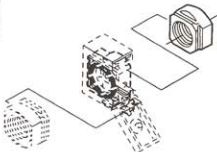
Fluid: Compressed Air
Maximum Inlet Pressure – Transparent Bowl: 150 psig
Metal Bowl: 250 psig
Maximum Temperature – Transparent Bowl: 125°F
Metal Bowl: 175°F
Gauge Port: 2-1/4" NPT (full flow)
Outlet Range: 5 - 125 psi

Accessories and Components for New Modular 1/4, 3/8 and 1/2" Body Size FRLs

Dimensions in inches (mm)

Quickmount Pipe Adapters

Port Size and Thread	AmFlo No. (1 pack)	Use with the Quickclamp to provide threaded connections to the system piping.
Compact		Each pipe adapter adds:
1/4" PTF	4764	.063" (15.9 mm) to the overall length of a combination unit.
3/8" PTF	4765	
Modular 1/2" Body Style		.71" (18 mm) to the overall length of a combination unit.
1/4" PTF	4767	
3/8" PTF	4755	
1/2" PTF	4756	
3/4" PTF	4768	



Quickclamp Wall Mounting Bracket

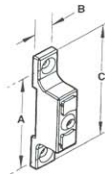
Use with the preceding Quickclamp to provide secure mounting to a wall, machine panel or other flat surface.

Compact Style **4759**

Use 3/16" (5mm) screws to mount bracket to wall.

Modular 1/2" (1mm) body size **4770**

Use 7/32" (6 mm) screws to mount bracket to wall.



	A	B	C
Compact	2/32(59)	0.55 (14)	2.91 (74)
Modular	3.25 (83)	0.95 (24)	4.0 (102)

Quickclamp

AmFlo Number

Compact Style 4761

Modular 1/2 Body 4769

Maximum Pressure: 250 psig (17 bar)

Maximum Temperature:

Compact 150°F (65°C)

Modular 175°F (79°C)

Use with all compact and 1/2" modular products to provide modular installation capability. Flanges on the products slide into V grooves in the Quickclamp. Two face-sealing o-rings in the Quickclamp provide a positive seal when the clamp is closed and the captive screw is tightened.

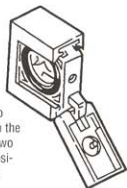
A Quickclamp adds:

Compact

0.26" (5.5 mm) to the overall length of a combination unit. Screw with a 5/32" (4mm) hex or a T25 Torx wrench.

Modular

0.54" (13.6 mm) to the overall length of a combination unit. Screw with a 5/32" (4 mm) hex or a T25 Torx wrench.



4162A-99

Quickclamp and Wall Mounting Bracket

AmFlo Number:

Compact Style 4762

Modular 1/2 Body 4771

See preceding paragraphs for descriptions and dimensions.

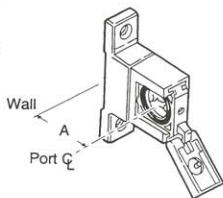
Compact

Use 3/16" (6mm) screws to mount bracket to wall.

Modular

Use 7/32" (6mm) screws to mount bracket to wall.

Compact -
1/50" (38)
Modular - 2.00"
(51)



Panel Nut

Use to panel mount new modular 1/2" reg. and 1/2" combinations.

AmFlo Number:

4763

(Plastic) Compact

4773

(Zinc) Modular



Wall Mounting Bracket

Use to secure compact and 1/2" modular single units.

AmFlo Numbers:

Compact style **4760**

Modular 1/2" body style **4772**

Use 3/16" (5mm) screws to mount bracket to wall.

