

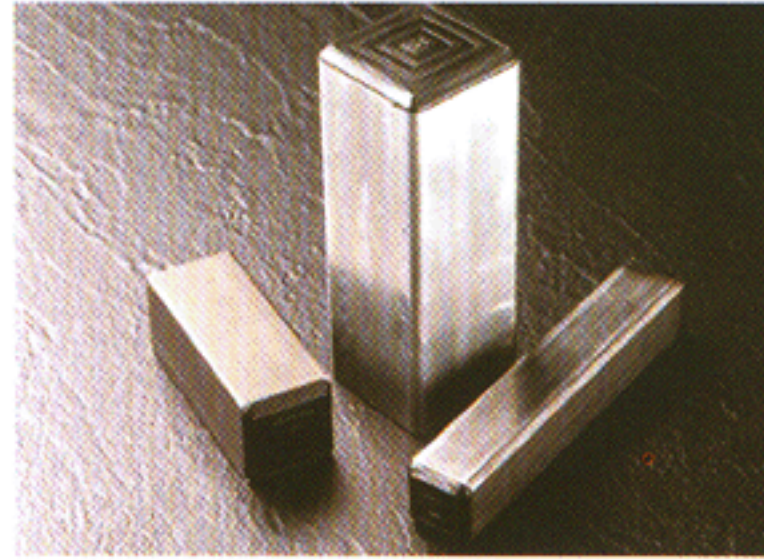
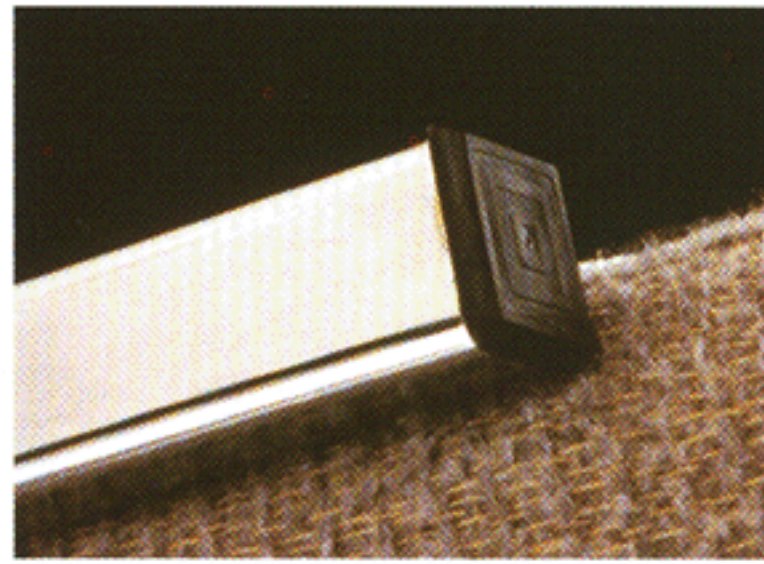


# PLUGS non-threaded

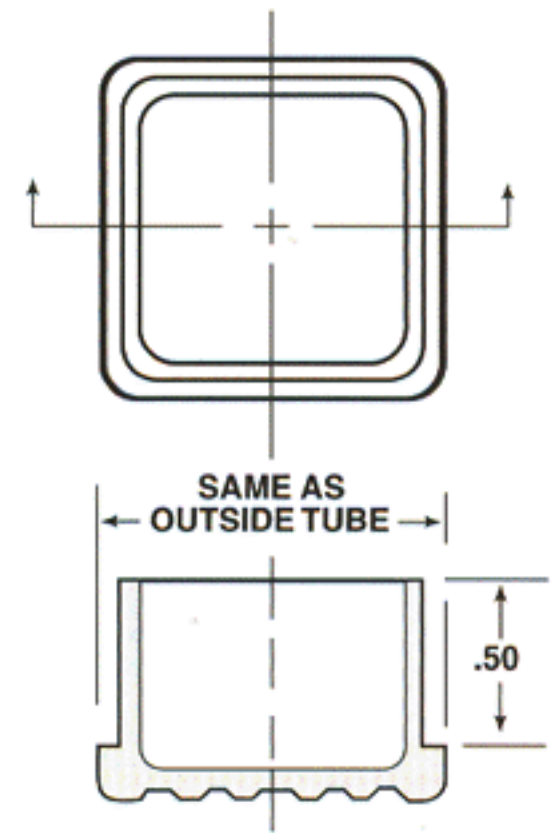
## FP Series Finishing Plugs for Square Tubing



Series FP closures are finishing plugs for square tubing. Sized for different gauges, their shoulders fit flush with tubing sides. In addition to keeping dirt and moisture out of sensitive areas, Series FP Plugs provide a clean finish to the square tube ends on completed products. They also protect against injury from sharp tubing edges.



MATERIAL: Low Density Polyethylene  
COLOR\*: Black



## PIP Series Push-In Plugs

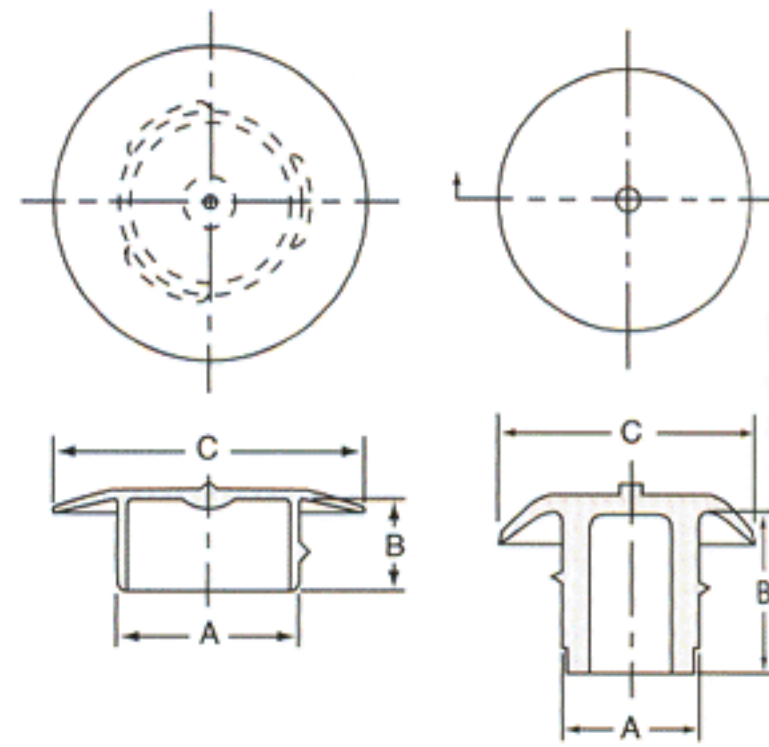
NEW



Series PIP Plugs are designed to fit SAE thread sizes. These parts offer the convenience of a push-in plug with the plugging quality of a threaded plug.



MATERIAL: Low Density Polyethylene  
COLOR\*: Black



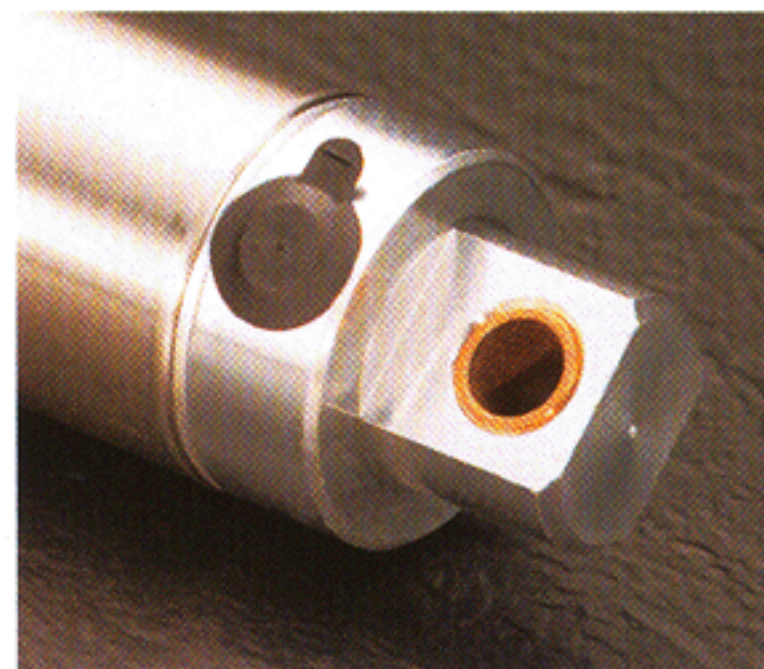
PIP-1/4 only

## PIP-TAB Series Push-In Plugs with Pull-Tab

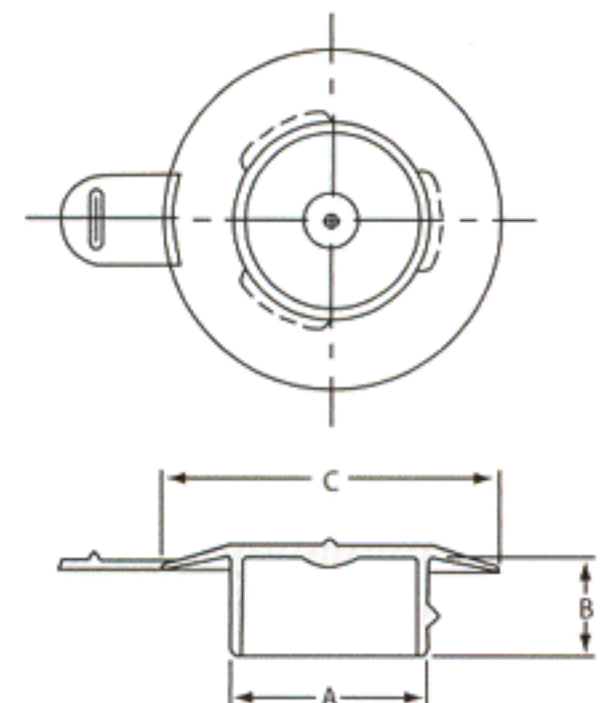
NEW



Series PIP-Tab Plugs are designed to fit SAE thread sizes. These parts offer the convenience of a push-in plug with the plugging quality of a threaded plug. Series PIP-Tab also has a convenient pull-tab for easy removal.



MATERIAL: Low Density Polyethylene  
COLOR\*: Black







## FP Series

Dimensions		Packaging				Caplug No.
		Standard Carton		No. of Pieces	Mini Pak Quantity	
To Fit Tube Size Inches	Wall Thickness Inches	Shipping Wt. (Approx.)				
		lbs	kgs			
0.75	.065 (16 Ga.)	14	6.3	5000	1000	FP-125
1.00	.120 (11 Ga.)	12	5.4	2500	500	FP-161
1.00	.083 (14 Ga.)	11	4.9	2500	500	FP-164
1.00	.065 (16 Ga.)	13	5.8	2500	500	FP-165
1.00	.049 (18 Ga.)	15	6.8	2500	500	FP-166
1.00	.035 (20 Ga.)	17	7.6	2500	500	FP-167
1.25	.120 (11 Ga.)	20	9	2500	500	FP-201
1.25	.083 (14 Ga.)	17	7.6	2500	500	FP-204
1.25	.065 (16 Ga.)	19	8.6	2500	500	FP-205
1.50	.120 (11 Ga.)	11	4.9	1000	200	FP-241
1.50	.083 (14 Ga.)	10	4.5	1000	200	FP-244
1.50	.065 (16 Ga.)	11	4.9	1000	200	FP-245
2.00	.120 (11 Ga.)	16	7.2	1000	200	FP-321
2.00	.083 (14 Ga.)	15	6.8	1000	200	FP-324
2.00	.065 (16 Ga.)	17	7.6	1000	200	FP-325

## PIP Series

Dimensions								Packaging				Caplug No.
								Standard Carton		No. of Pieces	Mini Pak Quantity	
To Fit Thread Size Inches	To Fit Thread Size Inches	A		B		C		Shipping Wt. (Approx.)				
		in	mm	in	mm	in	mm	lbs	kgs			
1/4 SAE	-	.206	5.23	.25	6.35	.40	10.16	3	1.3	5000	1000	PIP-1/4*
3/8 SAE	1/8 NPT	.317	8.05	.24	6.10	.59	14.99	4	1.8	5000	1000	PIP-3/8
7/16 SAE	-	∅	∅	∅	∅	∅	∅	3	1.3	5000	1000	PIP-7/16
1/2 SAE	1/4 NPT	.444	11.28	.27	6.86	.72	18.29	5	2.2	5000	1000	PIP-1/2
9/16 SAE	-	∅	∅	∅	∅	∅	∅	5	2.2	5000	1000	PIP-9/16
5/8 SAE	3/8 NPT	.558	14.17	.29	7.37	.96	24.38	7	3.2	5000	1000	PIP-5/8
3/4 SAE	-	∅	∅	∅	∅	∅	∅	7	3.2	5000	1000	PIP-3/4
7/8 SAE	-	∅	∅	∅	∅	∅	∅	8	3.6	5000	1000	PIP-7/8

## PIP-TAB Series

Dimensions								Packaging				Caplug No.
								Standard Carton		No. of Pieces	Mini Pak Quantity	
To Fit Thread Size Inches	To Fit Thread Size Inches	A		B		C		Shipping Wt. (Approx.)				
		in	mm	in	mm	in	mm	lbs	kgs			
3/8 SAE	1/8 NPT	0.317	8.05	0.24	6.10	0.59	14.99	4	1.8	5000	1000	PIP-3/8 TAB
7/16 SAE	-	∅	∅	∅	∅	∅	∅	4	1.8	5000	1000	PIP-7/16 TAB
1/2 SAE	1/4 NPT	0.444	11.28	0.27	6.86	0.72	18.29	6	2.7	5000	1000	PIP-1/2 TAB
9/16 SAE	-	∅	∅	∅	∅	∅	∅	6	2.7	5000	1000	PIP-9/16 TAB
5/8 SAE	3/8 NPT	0.558	14.17	0.29	7.37	0.96	24.38	8	3.6	5000	1000	PIP-5/8 TAB
3/4 SAE	-	∅	∅	∅	∅	∅	∅	8	3.6	5000	1000	PIP-3/4 TAB
7/8 SAE	-	∅	∅	∅	∅	∅	∅	9	4.1	5000	1000	PIP-7/8 TAB