



## Self-Cleaning Water Gauges

Polished Round Body, Composition Wheels  
Tested for Pressures to 200 Pounds



**Nos. 0—3—7 1/2**  
**Two Guards**



**Nos. 5—7**  
**Four Guards**

Number	Pipe Thread	Center Distance	Glass Size	Rod Length
0	3/8	11 1/2	5/8 x 10	12
3	1/2	13 1/2	5/8 x 12	14
7 1/2	3/4	17 1/2	3/4 x 16	18
5	1/2	13 1/2	5/8 x 12	12 3/4
7	3/4	18	3/4 x 16	17

All Units Have Drain Valve in Lower Body with 1/4" Dia. Opening to Meet A.S.M.E. Requirements.

Can be furnished with or without BALL CHECK. Furnished without check unless otherwise specified.



## Rough Body Metal Wheels

Number	Pipe Thread	Center Distance	Glass Size	Rod Length
000	3/8	11 1/2	5/8 x 10	12
000L	3/8	11 1/2	5/8 x 10	12
1	1/2	13 1/2	5/8 x 12	14
1 1/2	3/4	17 1/2	3/4 x 16	18
1L	1/2	13 1/2	5/8 x 12	14



Tested for Pressures  
to 200 Pounds  
**No. 000, 1, and 1 1/2**

Tested for Pressure to 100#  
**No. 29 No. 000L and 1L**  
Tapped 1/4" I.P.  
Thread for Pressure  
Gauge

## Rough Body Tested for 100#



Expansion Tank Type  
**No. 00000, 0000, 00**

Number	Pipe Thread	Center Distance	Glass Size	Rod Length
00000	3/8	11 1/2	5/8 x 10	12
0000	1/2	13 1/2	5/8 x 12	14
00	3/4	17 1/2	3/4 x 16	18
28	1/2	13 1/2	5/8 x 12	14
29	1/2	13 1/2	5/8 x 12	14
32	1/2	13 1/2	5/8 x 12	14



**No. 28**

**Chain Lever Water Gauge**

Quick Opening

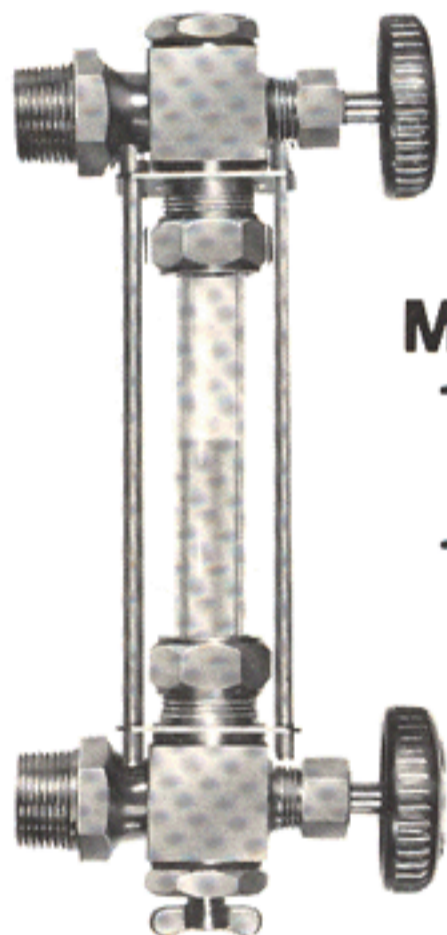


**No. 53 and  
No. 54**

**Square Body      Satin Finish      Four Guards**  
Tested for Pressures to 400 Pounds w/Hi-Pressure Glass

Number	Pipe Thread	Center Distance	Glass Size	Rod Length
53	1/2	14	3/4 x 12	13
54	3/4	18	3/4 x 16	17

**“Michigan” Safety Automatic Water Gauge**



**Models  
19G4  
and  
19G5**

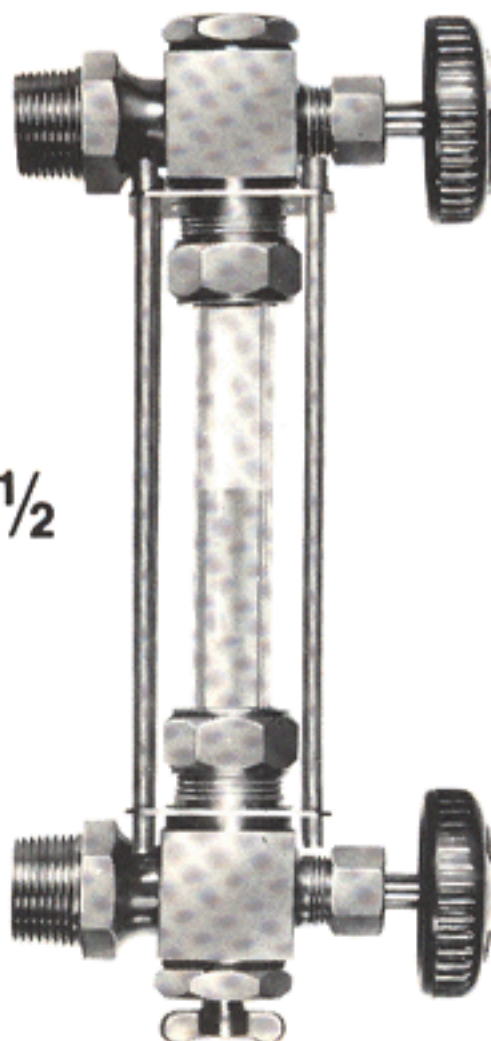


Sectional  
View

**Square Polished Body Four Guards**  
Tested for Pressures to 400 Pounds w/Hi-Pressure Glass

Number	Pipe Thread	Center Distance	Glass Size	Rod Length
19G4	1/2	13 1/2	5/8 x 12	12 3/4
19G5	3/4	18	3/4 x 16	17

**Self-Cleaning Water Gauges**



**Square Polished Body, Composition Wheels, Four Guards**  
Tested for Pressures to 400 Pounds w/Hi-Pressure Glass

Number	Pipe Thread	Center Distance	Glass Size	Rod Length
9	1/2	13 1/2	5/8 x 12	12 3/4
9 1/2	3/4	18	3/4 x 16	17

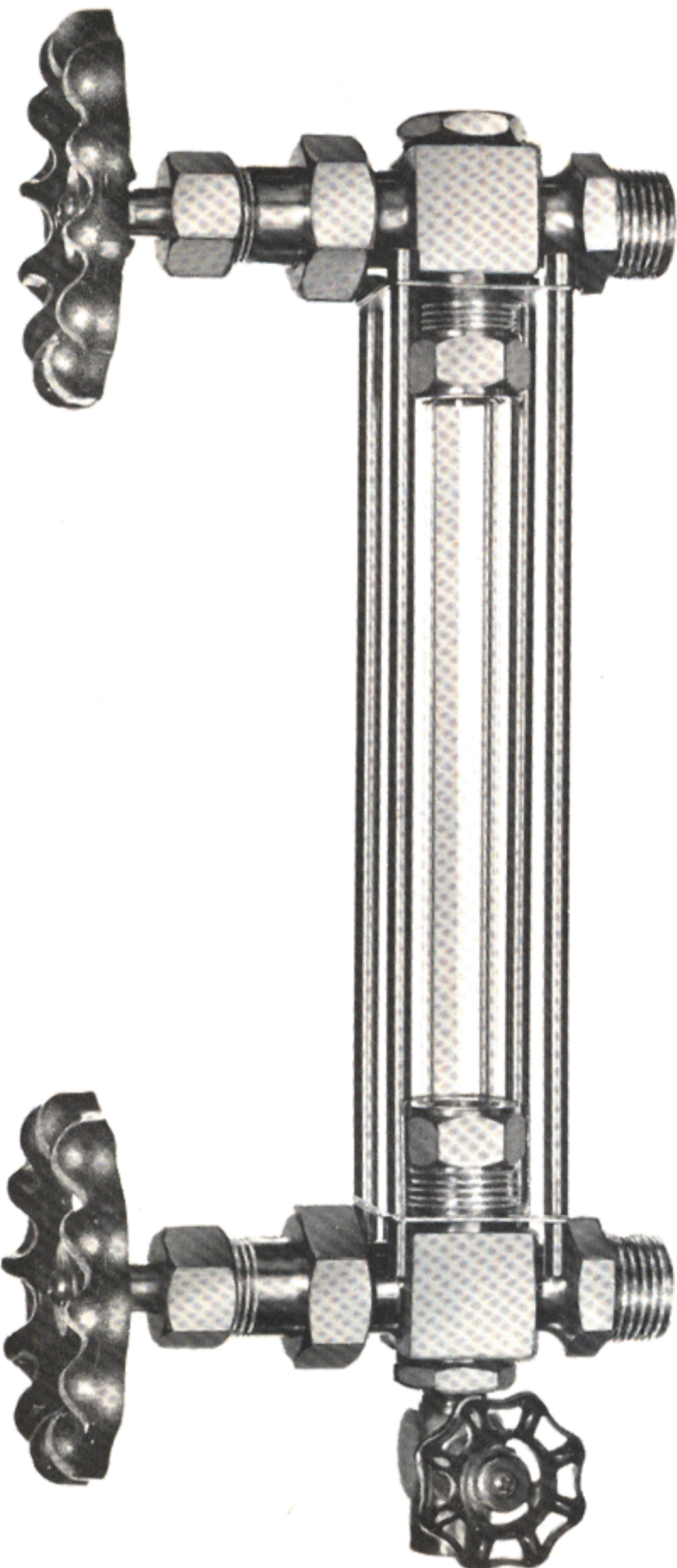
**No. 9 and 9 1/2**

**Direct Reading — Liquid Level Indicators**

THESE UNITS ARE MANUFACTURED TO CONFORM TO MILITARY SPECIFICATION MIL-I-20037-A, AND ARE CLASSIFIED AS FOLLOWS:

- TYPE 1 — NON-AUTOMATIC:** No Ball Check, Suitable for Maximum Working Pressure to 100 P.S.I.
- TYPE 2 — AUTOMATIC:** Unit Has Automatic Ball Check, Suitable for Maximum Working Pressure of 300 P.S.I.
- CLASS A — GENERAL:** Guard Rod Type Protection for Gauge Glass
- CLASS B — SHIELDED:** Tubular Brass Shield Around Gauge Glass (Price upon Request)

"ESSEX" Units are Available to Fit all Requirements. In Ordering, State Size, Type, & Class Required.



Upon Request, Units can be Supplied with A.S.A. Flanges, 150# or 300# in Either 1/2" or 3/4" Size. Flanges will be "Silver Soldered" to Bodies.

**CONSTRUCTION**

- BODIES — Cast Bronze per Mil-B-16542
- TRIM — "Naval Brass" per QQ-B-637
- GLASS — "Pyrex" Brand Red Line, Reflex Tubular per Mil-G-2695
- RODS — 4-1/4" Dia. Solid Brass
- Drain Valve Connection—3/8" Female Pipe

This unit with "Polycarbonate Tube" meets "High Shock" requirements of Mil-S-901C and the "Vibration" requirements of Mil-Std-167 for Type 1 vibration up to 25 cps (Certified Test Reports available upon request).

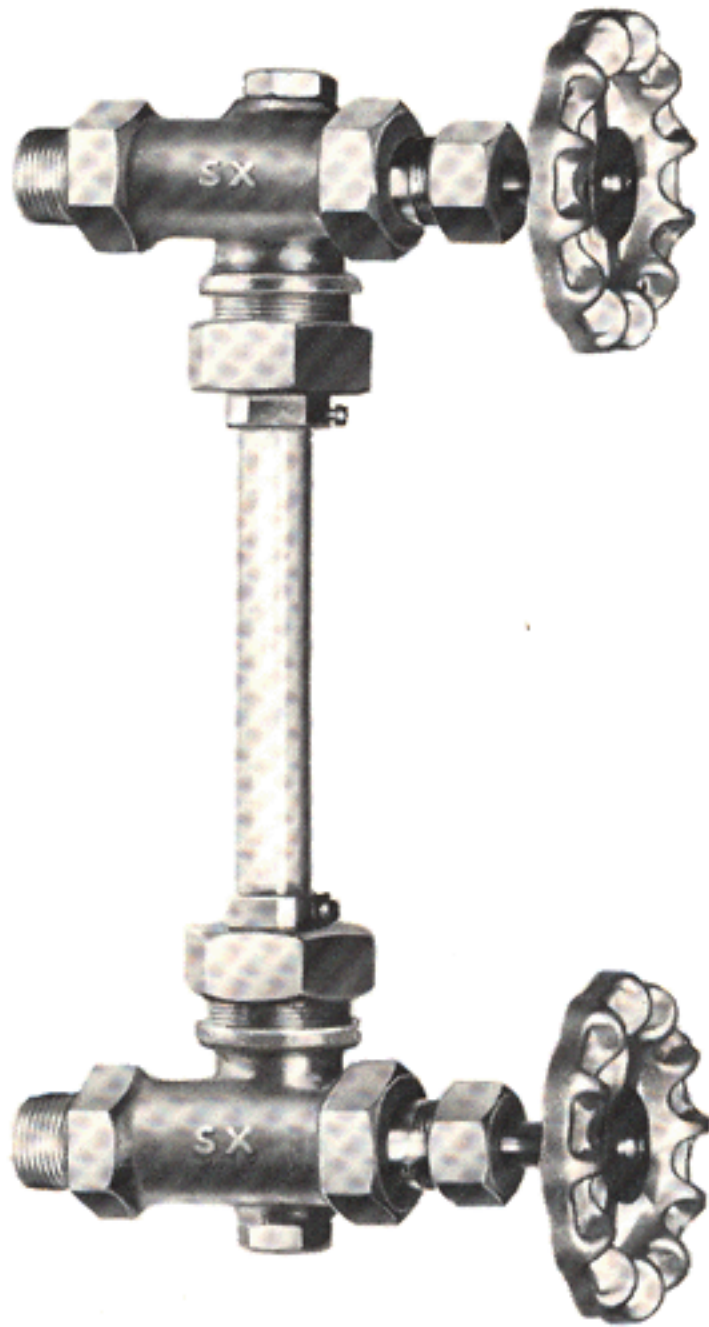
Number	Pipe Thd.	Std. Center Distance*	Glass Size	Rod Lg't
53-A	1/2"	24"	3/4" x 22	23"
54-A	3/4"	24"	3/4" x 22	23"

\*OTHER LENGTHS SUPPLIED UPON REQUEST

"NAVY" APPROVED  
 U.S.C.G. APPROVED  
 EACH UNIT INDIVIDUALLY TESTED

Direct Reading — Liquid Level Indicator

Model 104-P



Automatic Type — Quick Closing

Each unit individually tested hydrostatically at 450 p.s.i.

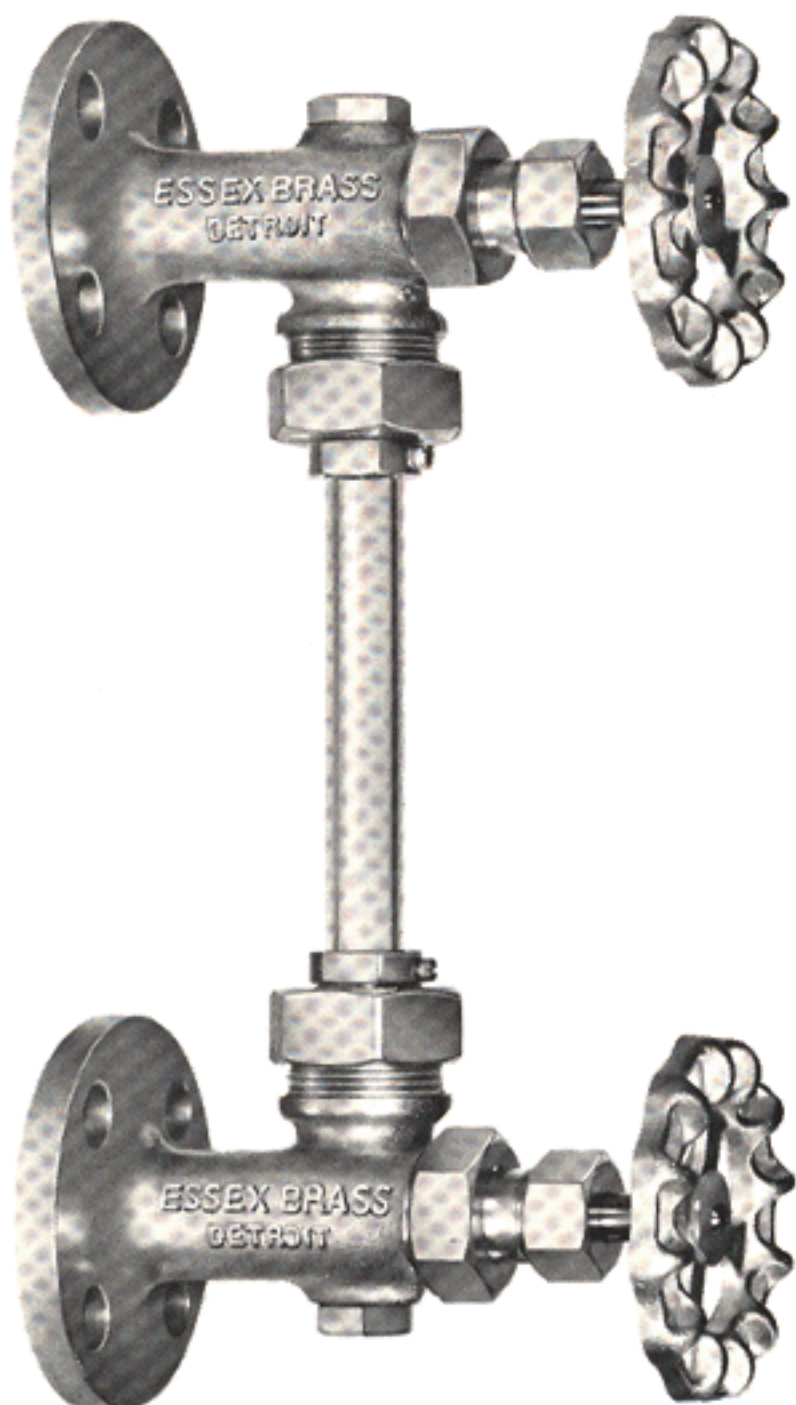
Unit is of bronze construction with “monel” trim, “viton” seals, and “polycarbonate” tube.

Unless otherwise specified, unit will be shipped complete with “polycarbonate” tube for 24” centers.

Upon request, this unit can also be supplied with “Pyrex” high pressure gauge glass with “Class B” protective shield.

THIS UNIT MEETS THE “HIGH SHOCK” REQUIREMENTS OF MIL-S-901C, AND THE “VIBRATION” REQUIREMENTS OF MIL-STD.-167, FOR TYPE 1 VIBRATION UP TO 25 C.P.S. (CERTIFIED TEST REPORTS AVAILABLE UPON REQUEST).

Model 104-A



Unit per Mil-I-20037-A (Shock-Proof)

“Navy” approved

Automatic Type — Quick Closing

Each unit individually tested hydrostatically at 450 p.s.i.

Unit is of bronze construction with “monel” trim, “viton” seals, and “polycarbonate” tube.

Flanges are integral to bodies and are per A.S.A. standards for 3/4-150# flanges.

Unless otherwise specified, unit will be shipped complete with “polycarbonate” tube for 24” centers.

Upon request, this unit can also be supplied with “Pyrex” high pressure gauge glass with “Class B” protective shield.