

Direct Reading — Liquid Level Indicators

THESE UNITS ARE MANUFACTURED TO CONFORM TO MILITARY SPECIFICATION MIL-I-20037-A, AND ARE CLASSIFIED AS FOLLOWS:

- TYPE 1 — NON-AUTOMATIC:** No Ball Check, Suitable for Maximum Working Pressure to 100 P.S.I.
- TYPE 2 — AUTOMATIC:** Unit Has Automatic Ball Check, Suitable for Maximum Working Pressure of 300 P.S.I.
- CLASS A — GENERAL:** Guard Rod Type Protection for Gauge Glass
- CLASS B — SHIELDED:** Tubular Brass Shield Around Gauge Glass (Price upon Request)

"ESSEX" Units are Available to Fit all Requirements. In Ordering, State Size, Type, & Class Required.



Upon Request, Units can be Supplied with A.S.A. Flanges, 150# or 300# in Either 1/2" or 3/4" Size. Flanges will be "Silver Soldered" to Bodies.

CONSTRUCTION

- BODIES — Cast Bronze per Mil-B-16542
- TRIM — "Naval Brass" per QQ-B-637
- GLASS — "Pyrex" Brand Red Line, Reflex Tubular per Mil-G-2695
- RODS — 4-1/4" Dia. Solid Brass
- Drain Valve Connection—3/8" Female Pipe

This unit with "Polycarbonate Tube" meets "High Shock" requirements of Mil-S-901C and the "Vibration" requirements of Mil-Std-167 for Type 1 vibration up to 25 cps (Certified Test Reports available upon request).

Number	Pipe Thd.	Std. Center Distance*	Glass Size	Rod Lg't
53-A	1/2"	24"	3/4" x 22	23"
54-A	3/4"	24"	3/4" x 22	23"

*OTHER LENGTHS SUPPLIED UPON REQUEST

"NAVY" APPROVED
 U.S.C.G. APPROVED
 EACH UNIT INDIVIDUALLY TESTED

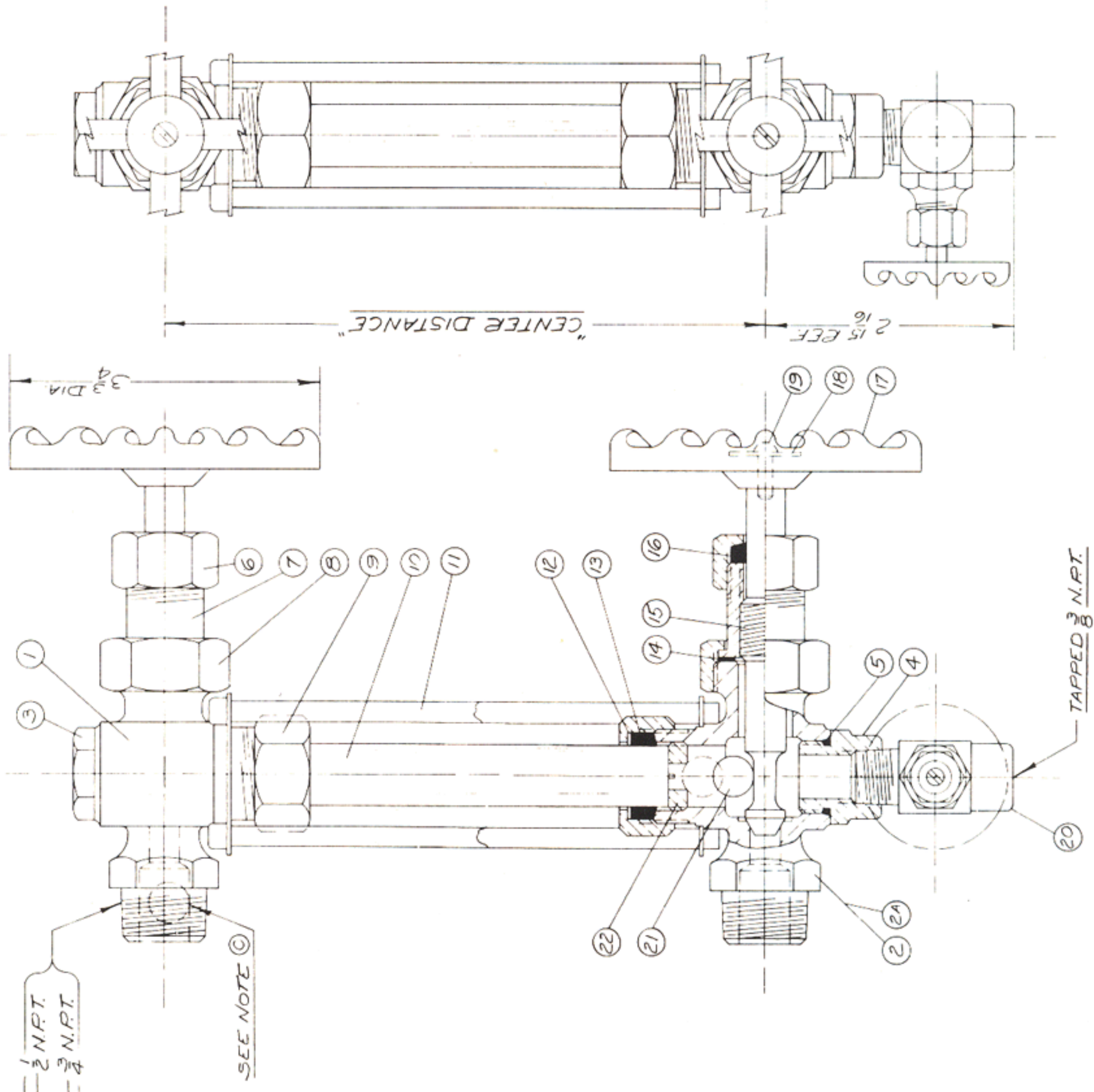
Nº 53-A
Nº 54-A

STOCK LIST

DET	PART NAME	PART #	REQ'D	MATERIAL
1	BODY, UPPER	BO-250A	1	BRONZE ASTM-B-61
2	BODY, LOWER	BO-250A	1	"
2A	"	BO-250B	1	"
1	BODY, UPPER	BO-251A	1	"
2	BODY, LOWER	BO-251A	1	"
2A	"	BO-251B	1	"
3	PLUG, UPPER	PG-54-U	1	NAVAL BRASS-ASTM-B-21B
4	PLUG, LOWER	PG-54-L	1	"
5	"O" RING	R-54	2	"VITON"
6	STEM PK. NUT	NT-219	2	NAVAL BRASS, ASTM-B-21B
7	HUB NUT	HU-54	2	"
8	HUB NUT	NT-54	2	"
9	GLASS PK. NUT	NT-223	2	"
10	3/4 O.D. GLASS x 7/64 WALL		1	"PYREX" - MIL-G-2695
11	GUARD ROD - 1/4" DIA.		4	BRASS-ASTM-B-16
12	FIBER WASHER	WA-52	2	HARD FIBER
13	FIBER WASHER	WA-53	2	"VITON"
14	HUB WASHER	WA-54	2	ASBES.-NEOPRENE
15	STEM	ST-226-A	2	NAVAL BRASS-ASTM-B-21B
16	PK. RING	R-53	2	MOLDED GRAPH & ASB.
17	HANDLE	H-53	2	ALUMINUM
18	WASHER	WA-57	2	BRASS - COMM'L.
19	SCREW	EIL-008	2	"
20	DRAIN VALVE	DC-53	1	NAVAL BRASS-ASTM-B-21B
21	BALL	B-54	1	STAINLESS STEEL-18-8
22	RETAINER	RE-54	1	NAVAL BRASS-ASTM-B-21B

SEE NOTE A
#53-A - 1/2"
#54-A - 3/4"

SEE NOTE B



#53-A - 1/2 N.P.T.
#54-A - 3/4 N.P.T.

SEE NOTE C

TAPPED 3/8 N.P.T.

A LOWER BODY #BO-250A (1/2") OR #BO-251A (3/4"), USED ON "TYPE-I" UNITS (NON-AUTOMATIC).
LOWER BODY #BO-250B (1/2") OR #BO-251B (3/4") USED "TYPE-II" UNITS (AUTOMATIC).

B THESE PARTS USED ON TYPE II UNIT ONLY.
C ALL UNITS SUPPLIED TO/ FOR U.S. COAST GUARD SHALL BE TYPE II UNITS & SHALL ALSO HAVE A BALL CHECK IN THE UPPER BODY.

This unit with "Polycarbonate Tube" meets "High Shock" requirements of Mil-S-901C. Ref. Lockheed Electronics Co. Inc. Test Report #3738-3378 Dated 12-11-74.

This unit with "Polycarbonate Tube" meets the "Vibration" requirements of Mil-Std-167 for Type 1 vibrations up to 25 cps. Ref. Lockheed Electronics Co. Inc. Test Report #3738-3378 Dated 12-11-74.

TYPE-I UNITS ARE NON-AUTOMATIC (WITHOUT BALL CHECK)
TYPE-II UNITS ARE AUTOMATIC (BALL CHECK IN LOWER BODY)
GLASS TUBE LGT. = "CENTER DISTANCE" MINUS 2 IN.
GUARD ROD LGT. = "CENTER DISTANCE" MINUS 1 IN.

ESSEX BRASS CORPORATION
DETROIT, MICHIGAN
"NAVY" WATER GAUGE
MIL-I-20037 TYPE-I&II
#53-A - 1/2" NPT
#54-A - 3/4" NPT