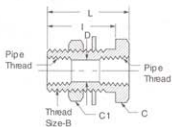
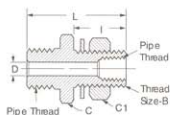


Bulkhead Coupling (Brass)



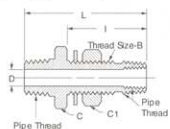
| Fem. Pipe Thread | Catalog Thread | Thread Size B | Hex C | Hex C1 | D | I | L |
|------------------|----------------|---------------|-------|--------|------|------|------|
| 1/4 | 1344 | 3/4-16 | 1 | 15/16 | .422 | 1.25 | 1.50 |
| 1/4 | 1345 | 3/4-16 | 1 | 15/16 | .422 | .69 | .94 |
| 3/8 | 1346 | 1-14 | 1-1/8 | 1-3/8 | .563 | 1.06 | 1.31 |
| 1/2 | 1351 | 1-1/8-14 | 1-1/4 | 1-3/8 | .703 | 1.19 | 1.50 |

Bulkhead Coupling (Brass)



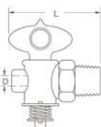
| Male Pipe Thread | Fem. Pipe Thread | Catalog Number | Thread Size B | Hex C | Hex C1 | D | I | L |
|------------------|------------------|----------------|---------------|-------|--------|------|------|------|
| 1/2 | 1/4 | 1340 | 3/4-16 | 1-1/4 | 15/16 | .312 | 1.13 | 2.16 |
| 1/2 | 1/4 | 1341 | 3/4-16 | 1-1/4 | 15/16 | .312 | 1.53 | 2.53 |

Bulkhead Coupling (Brass)



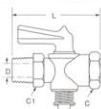
| Male Pipe Thread | Fem. Pipe Thread | Catalog Number | Thread Size B | Hex C | Hex C1 | D | I | L |
|------------------|------------------|----------------|---------------|-------|--------|------|------|------|
| 1/2 | 1/4 | 1342 | 1-14 | 1-1/4 | 1-3/8 | .375 | 1.88 | 2.94 |
| 1/2 | 1/4 | 1343 | 1-14 | 1-1/4 | 1-3/8 | .375 | 2.88 | 3.94 |

Draincock



| Male Pipe Thread | Catalog Number | D | L |
|------------------|----------------|------|------|
| 1/4 | W15310 | .188 | 1.56 |

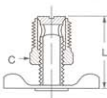
Shut Off Valve



Rating: 125 psi with one 1/4" bubble in 5 seconds permissible key leakage.

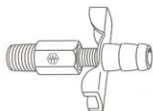
| Male Pipe Thread | Fem. Pipe Thread | Catalog Number | Hex C | Hex C1 | D | L |
|------------------|------------------|----------------|-------|--------|------|------|
| 1/4 | 1/4 | W20332 | 5/8 | 3/4 | .218 | 1.81 |

External Seat Draincock



| Male Pipe Thread | Catalog Number | Hex C | L |
|------------------|----------------|-------|------|
| 1/4 | 145 | 9/16 | 1.00 |

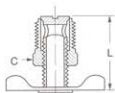
 Refer to safety information regarding tubing selection on page 1.



Drain Cocks and Drain Valves have been a specialty with Weatherhead since 1919. Millions are in use. The original design has proved so efficient that it is still the leader with most original equipment manufacturers. The metal-to-metal seat requires only hand tightening to assure positive leak-proof performance.

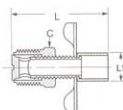
- **Material:** brass bodies/steel handles, except where noted.
- **Pressure:** 150 psi maximum (does not include hose or plastic tubing.)
- **Used With:** Copper, aluminum, steel, hose and plastic tubing where applicable.
- **Temperature:** -65°F to +250°F (-53°C to +121°C). (Refer to tubing temperature range.)
- **Conformance:** Designed for automotive or industrial use. Not intended for natural gas, LPG, nuclear or aircraft applications, except as noted.

External Seat



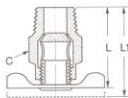
| Male Pipe Thread | Catalog Number | Hex C | L |
|------------------|----------------|-------|------|
| 1/8 | 135 | 7/16 | .90 |
| 1/4 | 145 | 9/16 | 1.00 |
| 3/8 | 270 | 11/16 | 1.25 |
| 1/2 | 108 | 7/8 | 1.52 |

External Seat



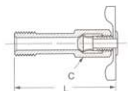
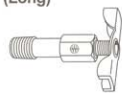
| Male Pipe Thread | Catalog Number | Hex C | L | L1 |
|------------------|----------------|-------|------|-----|
| 1/4 | 6788 | 9/16 | 1.56 | .44 |

Internal Seat



| Male Pipe Thread | Catalog Number | Hex C | L | L1 |
|------------------|----------------|-------|------|------|
| 1/8 | 130 | 17/32 | 1.15 | 1.30 |
| 1/4 | 140 | 5/8 | 1.32 | 1.50 |
| 1/4 | 190 | 9/16 | 1.25 | 1.41 |
| 3/8 | 230 | 11/16 | 1.34 | 1.50 |

Internal Seat (Long)



| Male Pipe Thread | Catalog Number | Hex C | L |
|------------------|----------------|-------|------|
| 1/8 | 185 | 7/16 | 1.72 |

CA-632 • FITTINGS ASSORTMENT

The CA-632 assortment combines a colorful, attractive lobby display unit and an assortment of fast moving brass fittings with coverage for most any application. This space saving assortment includes color coded, illustrated, labels for quick identification by customers of standard fittings, as well as fuel line, carburetion, metric and domestic hydraulic brake and thermoplastic brass fittings in 240 configurations and sizes. Be a supplier to auto dealers, brake specialists, RV shops, plant maintenance shops, truck and bus fleets, contractors, marinas, loggers, shipyards, fishing fleets, farmers and self installers for their brass fitting requirements. Contents of this assortment may vary as new fittings are introduced and stock fittings change in popularity.

Contents Only: CA-632CO

CA-632 Contents

| Catalog Number | Quantity | Catalog Number | Quantity | Catalog Number | Quantity | Catalog Number | Quantity |
|----------------|----------|----------------|----------|----------------|----------|----------------|----------|
| 05703B-102 | 5 | 302x5 | 10 | 3600x2 | 5 | 62x10 | 1 |
| 05704B-102 | 10 | 302x6 | 5 | 3600x4 | 5 | 6200x2 | 10 |
| 05704B-104 | 5 | 3129x2 | 5 | 3700x2 | 10 | 6200x3 | 10 |
| 05704B-C02 | 5 | 3150x2 | 10 | 3700x4 | 5 | 6200x4 | 10 |
| 05705B-102 | 10 | 3150x4 | 10 | 3700x6 | 5 | 6202 | 10 |
| 05705B-104 | 5 | 3151x2 | 10 | 3750x2 | 5 | 64x4 | 5 |
| 05705B-C02 | 10 | 3151x4 | 10 | 3750x4 | 5 | 64x6 | 5 |
| 05705B-C04 | 10 | 3151x6 | 10 | 402x3 | 10 | 66x2 | 10 |
| 05705B-1560 | 10 | 3151x8 | 5 | 402x4 | 10 | 66x3 | 10 |
| 05705B-1561 | 10 | 3152x2 | 10 | 402x4x4 | 5 | 66x4 | 10 |
| 05706B-102 | 10 | 3152x4 | 10 | 402x5 | 10 | 66x6 | 5 |
| 05706B-104 | 10 | 3152x6 | 10 | 402x5x4 | 10 | 6660 | 5 |
| 05706B-106 | 5 | 3152x8 | 5 | 402x6 | 10 | 6749 | 1 |
| 05706B-C02 | 5 | 3152x12 | 2 | 41x3 | 10 | 68x2 | 10 |
| 05706B-C04 | 5 | 3200x2 | 10 | 41x4 | 10 | 68x3 | 10 |
| 05706B-1568 | 5 | 3200x4 | 5 | 41x5 | 10 | 68x4 | 10 |
| 05706B-1570 | 5 | 3200x4x2 | 10 | 41x6 | 10 | 68x4x4 | 10 |
| 100x3 | 10 | 3200x6x4 | 5 | 41x8 | 5 | 68x5 | 10 |
| 100x4 | 10 | 3200x8x6 | 5 | 42x4 | 5 | 68x5x4 | 10 |
| 100x5 | 10 | 3220x4x2 | 20 | 42x6 | 5 | 68x6 | 10 |
| 100x6 | 10 | 3220x6x2 | 10 | 48x3 | 10 | 68x6x2 | 10 |
| 105x2 | 10 | 3220x6x4 | 10 | 48x4 | 10 | 68x6x6 | 5 |
| 105x3 | 20 | 3220x8x2 | 5 | 48x4x4 | 10 | 68x8 | 5 |
| 105x4 | 20 | 3220x8x4 | 10 | 48x5 | 10 | 6809 | 5 |
| 105x5 | 20 | 3220x8x6 | 5 | 48x5x4 | 10 | 6829 | 5 |
| 105x6 | 10 | 3220x12x6 | 2 | 48x6 | 10 | 6892 | 5 |
| 131x3 | 10 | 3220x12x8 | 2 | 48x6x2 | 5 | 69x2 | 10 |
| 131x4 | 10 | 3300x2 | 10 | 48x6x6 | 5 | 69x3 | 10 |
| 131x5 | 10 | 3300x4 | 10 | 48x8 | 5 | 69x4 | 10 |
| 131x6 | 10 | 3300x4x2 | 10 | 49x4 | 10 | 69x4x4 | 10 |
| 135 | 10 | 3300x6 | 5 | 49x4x4 | 5 | 69x5 | 10 |
| 140 | 5 | 3300x6x4 | 5 | 49x5 | 10 | 69x5x4 | 10 |
| 1442 | 5 | 3300x8 | 5 | 49x5x4 | 5 | 69x6 | 10 |
| 1443 | 5 | 3300x8x6 | 5 | 49x6 | 10 | 69x6x2 | 5 |
| 145 | 10 | 3325x2 | 10 | 49x8 | 5 | 69x6x6 | 5 |
| 1514 | 5 | 3325x4 | 10 | 60x2 | 50 | 69x8 | 5 |
| 1538 | 10 | 3325x4x2 | 5 | 60x3 | 50 | 7818 | 5 |
| 1548 | 10 | 3325x6 | 5 | 60x4 | 50 | 7828 | 5 |
| 1539 | 10 | 3325x6x4 | 5 | 60x5 | 50 | 7829 | 5 |
| 1540 | 10 | 3326x2 | 10 | 60x6 | 50 | 7896x3 | 5 |
| 202x3 | 10 | 3326x4 | 10 | 60x8 | 20 | 7896x4 | 5 |
| 202x4 | 10 | 3326x6 | 10 | 60x10 | 10 | 7904 | 5 |
| 202x4x4 | 10 | 3326x8 | 5 | 61x2 | 10 | 7906 | 5 |
| 202x5 | 10 | 3327x2 | 10 | 61x3 | 20 | 7908 | 2 |
| 202x5x4 | 10 | 3327x4 | 5 | 61x4 | 20 | 7914 | 2 |
| 202x6 | 10 | 3328x2 | 10 | 61x5 | 20 | 7934A | 5 |
| 202x6x2 | 5 | 3328x4 | 5 | 61x6 | 10 | 7935 | 5 |
| 2030x4 | 10 | 3328x6 | 5 | 61x8 | 10 | 7936 | 5 |
| 2030x44 | 10 | 3350x2 | 5 | 6100x2 | 10 | 7937 | 5 |
| 2030x5 | 10 | 3350x4 | 5 | 6100x3 | 10 | 7940 | 5 |
| 2030x6 | 10 | 3350x6 | 5 | 6100x4 | 10 | 7941 | 5 |
| 2030x8 | 5 | 3400x2 | 10 | 62x2 | 10 | C-632X | 1 |
| 252x3 | 10 | 3400x4 | 10 | 62x3 | 10 | CL-490 | 1 |
| 252x4 | 10 | 3400x6 | 5 | 62x4 | 10 | | |
| 270 | 5 | 3400x8 | 5 | 62x5 | 10 | | |
| 302x3 | 10 | 3500x2 | 10 | 62x6 | 10 | | |
| 302x4 | 10 | 3500x4 | 10 | 62x8 | 5 | | |



CA-631 • BRASS FITTINGS ASSORTMENT

This merchandiser will help you organize your brass fittings in an attractive 63 drawer cabinet. It includes a stock of the 100 fastest moving brass fittings to better service your customers. To expand, divide the clear, easy to inventory, super sized plastic drawers in half or thirds with plastic dividers provided. Illustrated, color-coded labels in a wide range of fitting types provide instant identification of drawer contents. Your lobby and sales will be improved with this modern display set up on a gondola or shelf. Contents may vary as new numbers become available and popularity changes.

Contents Only: **CA-631CO**

Cabinet Only: **C-63X**

CA-631 Contents

| Catalog Number | Qty. | Catalog Number | Qty. | Catalog Number | Qty. | Catalog Number | Qty. | Catalog Number | Qty. | Catalog Number | Qty. |
|----------------|------|----------------|------|----------------|------|----------------|------|----------------|------|----------------|------|
| 105x3 | 20 | 302x4 | 10 | 3200x4x2 | 10 | 3326x6 | 10 | 48x4x4 | 10 | 62x2 | 10 |
| 105x4 | 20 | 302x5 | 10 | 3200x6x4 | 5 | 3327x2 | 5 | 48x5 | 10 | 62x3 | 10 |
| 105x5 | 20 | 302x6 | 5 | 3220x4x2 | 20 | 3327x4 | 5 | 48x5x4 | 10 | 62x4 | 10 |
| 105x6 | 10 | 402x4 | 10 | 3220x6x2 | 10 | 3328x2 | 5 | 48x6 | 10 | 62x5 | 10 |
| 131x3 | 10 | 402x5 | 10 | 3220x6x4 | 10 | 3328x4 | 5 | 48x6x6 | 5 | 62x6 | 10 |
| 131x4 | 10 | 402x6 | 10 | 3220x8x2 | 5 | 3350x2 | 5 | 49x4 | 5 | 68x2 | 10 |
| 131x5 | 10 | 3150x2 | 5 | 3220x8x4 | 10 | 3350x4 | 5 | 49x6 | 10 | 68x3 | 10 |
| 131x6 | 10 | 3150x4 | 5 | 3220x8x6 | 5 | 3400x2 | 10 | 60x2 | 50 | 68x4 | 10 |
| 135 | 10 | 3151x2 | 10 | 3300x2 | 10 | 3400x4 | 10 | 60x3 | 50 | 68x4x4 | 10 |
| 145 | 10 | 3151x4 | 10 | 3300x4 | 10 | 3400x6 | 5 | 60x4 | 50 | 68x5 | 10 |
| 202x3 | 10 | 3151x6 | 10 | 3300x4x2 | 10 | 3700x2 | 10 | 60x5 | 50 | 68x5x4 | 10 |
| 202x4 | 10 | 3151x8 | 10 | 3300x6 | 5 | 3700x4 | 5 | 60x6 | 50 | 68x6 | 10 |
| 202x4x4 | 10 | 3152x2 | 10 | 3300x6x4 | 5 | 3750x4 | 5 | 61x2 | 10 | 68x6x2 | 10 |
| 202x5 | 10 | 3152x4 | 10 | 3325x2 | 10 | 3750x6 | 2 | 61x3 | 10 | 69x4 | 10 |
| 202x5x4 | 10 | 3152x6 | 10 | 3325x4 | 10 | 41x4 | 10 | 61x4 | 10 | 69x6 | 10 |
| 202x6 | 5 | 3152x8 | 5 | 3326x2 | 10 | 41x6 | 10 | 61x5 | 10 | C-63X | 1 |
| 302x3 | 10 | 3200x2 | 5 | 3326x4 | 10 | 48x4 | 10 | 61x6 | 10 | CL-490 | 1 |



FC-161 • BRASS FITTINGS ASSORTMENT

The FC-161 brass fitting assortment contains the fastest moving SAE 45° Flare, Inverted Flare, Compression and Pipe catalog numbers to give your customers maximum coverage at a low cost. Nuts, sleeves and unions make an ideal stock for any small repair, auto, boat, lawn mower, or fixit shop. Cabinet includes 16 clear plastic drawers and color-coded labels for easy identification. The FC-161 fits on any shelf and goes to work immediately.

Cabinet Only: **FC-16X**

FC-161 Contents

| Catalog Number | Qty. | Catalog Number | Qty. | Catalog Number | Qty. | Catalog Number | Qty. | Catalog Number | Qty. | Catalog Number | Qty. |
|----------------|------|----------------|------|----------------|------|----------------|------|----------------|------|----------------|------|
| 105x3 | 10 | 302x5 | 2 | 402x3 | 2 | 48x6 | 2 | 61x3 | 10 | 68x4 | 2 |
| 105x4 | 10 | 3151x2 | 2 | 402x4 | 2 | 49x4 | 2 | 61x4 | 10 | 68x5 | 2 |
| 105x5 | 10 | 3151x4 | 2 | 402x5 | 2 | 49x5 | 2 | 61x5 | 10 | 68x6 | 2 |
| 105x6 | 5 | 3220x4x2 | 5 | 41x4 | 2 | 49x6 | 2 | 61x6 | 5 | 69x4 | 2 |
| 145 | 5 | 3220x6x4 | 5 | 41x5 | 2 | 60x3 | 20 | 62x3 | 5 | 69x5 | 2 |
| 202x4 | 2 | 3300x2 | 5 | 41x6 | 2 | 60x4 | 20 | 62x4 | 5 | 69x6 | 2 |
| 202x5 | 2 | 3300x4 | 2 | 48x4 | 2 | 60x5 | 20 | 62x5 | 5 | CL-16-1 | 1 |
| 302x3 | 5 | 3400x2 | 5 | 48x5 | 2 | 60x6 | 20 | 62x6 | 5 | FC-16X | 1 |
| 302x4 | 5 | 3400x4 | 5 | | | | | | | | |



DC-121 • PLASTIC DRAIN COCK ASSORTMENT

To address your plastic drain cock needs, Weatherhead now offers a full assortment of domestic and offshore drain cocks. This kit comes complete with a plastic box and a label with part number and application information.

| Catalog Number | Qty. | Catalog Number | Qty. | Catalog Number | Qty. |
|----------------|------|----------------|------|----------------|------|
| 110 | 2 | 113 | 2 | 116 | 2 |
| 111 | 2 | 114 | 2 | 117 | 2 |
| 112 | 2 | 115 | 2 | 135 | 2 |
| | | | | 145 | 2 |

PC-48 • PUSH > CONNECT FITTINGS ASSORTMENT

Weatherhead PUSH > CONNECT fittings are designed for quick assembly without the need for a wrench. Ideal for pneumatic applications where space is tight. Then fittings are also easily disconnected; simply depress the collet ring with two fingers and withdraw the tube. The PC-48 provides the 48 most popular PUSH > CONNECT fittings in a compact, handy plastic box to make your assortment organized and accessible.



| Catalog Number | Qty. | Catalog Number | Qty. | Catalog Number | Qty. |
|----------------|------|----------------|------|----------------|------|
| 1162x2 | 5 | 1168x2.5A | 5 | 1169x4S | 5 |
| 1162x4 | 5 | 1168x2.5x4 | 5 | 1169x4x4S | 5 |
| 1162x6 | 5 | 1168x2x4 | 5 | 1169x4x6S | 5 |
| 1164x2.5 | 5 | 1168x4 | 5 | 1169x6S | 5 |
| 1164x4 | 5 | 1168x4A | 5 | 1169x6x6S | 5 |
| 1164x6 | 5 | 1168x4x4 | 5 | 1169x8S | 2 |
| 1164x8 | 2 | 1168x4x6 | 5 | 1169x8x4S | 2 |
| 1165x2.5 | 5 | 1168x5 | 5 | 1171x4S | 5 |
| 1165x4 | 5 | 1168x5x4 | 5 | 1171x4x4S | 5 |
| 1165x6 | 5 | 1168x6 | 5 | 1171x6S | 5 |
| 1165x8 | 2 | 1168x6x6 | 5 | 1172x4S | 5 |
| 1166x4 | 5 | 1168x6x8 | 2 | 1172x4x4S | 5 |
| 1166x4x4 | 5 | 1168x8 | 5 | 1174x2 | 5 |
| 1166x6 | 5 | 1168x8x8 | 2 | 1174x4 | 5 |
| 1166x6x6 | 2 | 1169x2.5S | 5 | CL-499 | 1 |
| 1168x2 | 2 | 1169x2S | 5 | FC-16X | 1 |
| 1168x2.5 | 5 | 1169x2x4S | 5 | | |



AB-1400 • AIR BRAKE FITTINGS ASSORTMENT

The AB-1400 contains DOT approved brass air brake fittings for servicing nylon brake and secondary air lines. Selecting the proper fittings from the 63 drawer cabinet included with assortment is easy. Clear, wide plastic drawers with color-coded labels make identification of shapes and sizes quick and simple. Order Weatherhead NT100 nylon air brake tubing to complete your nylon air brake line service center.

AB-1400 Contents

| Catalog Number | Quantity | Catalog Number | Quantity | Catalog Number | Quantity | Catalog Number | Quantity |
|----------------|----------|----------------|----------|----------------|----------|----------------|----------|
| 1460x4 | 10 | 1464x6 | 5 | 1469x6 | 10 | 1472x6 | 5 |
| 1460x6 | 20 | 1464x8 | 5 | 1469x6L | 5 | 1472x8 | 5 |
| 1460x8 | 10 | 1466x6 | 5 | 1469x6x2 | 5 | 1480x6 | 5 |
| 1460x10 | 10 | 1466x6x6 | 5 | 1469x6x6 | 5 | 1480x6x6 | 5 |
| 1460x12 | 10 | 1466x8 | 5 | 1469x8 | 5 | 1480x8 | 5 |
| 1461x4 | 5 | 1468x4 | 5 | 1469x8x4 | 5 | 1480x10 | 4 |
| 1461x6 | 10 | 1468x4x4 | 5 | 1469x10 | 5 | 1484x4 | 20 |
| 1461x8 | 5 | 1468x6 | 10 | 1469x10x6 | 4 | 1484x6 | 20 |
| 1461x10 | 5 | 1468x6x2 | 5 | 1469x12 | 4 | 1484x8 | 20 |
| 1461x12 | 5 | 1468x8 | 5 | 1471x4 | 5 | 1484x10 | 10 |
| 1462x4 | 5 | 1468x10 | 5 | 1471x6 | 5 | 1484x12 | 10 |
| 1462x6 | 10 | 1468x12 | 4 | | | C-63X | 1 |
| 1462x8 | 5 | 1469x4 | 5 | | | CL-497 | 1 |
| 1462x10 | 4 | 1469x4x4 | 5 | | | | |
| 1462x12 | 2 | | | | | | |

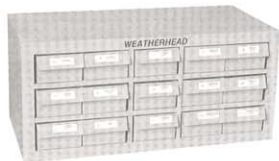


AB-140 • 1400 SERIES AIR BRAKE FITTINGS ASSORTMENT

This assortment of 1/4", 3/8", 1/2" air brake fittings designed for use with NT100 nylon air brake tubing provides the coverage needed for service work by fleets, repair shops and farm implement dealers. The DOT approved air brake fittings are easily selected from the cabinet with 16 plastic drawers and color-coded labels included in the assortment.

AB-140 Contents

| Catalog Number | Quantity | Catalog Number | Quantity | Catalog Number | Quantity | Catalog Number | Quantity |
|----------------|----------|----------------|----------|----------------|----------|----------------|----------|
| 1460x4 | 20 | 1461x8 | 5 | 1468x6 | 10 | 1484x6 | 20 |
| 1460x6 | 20 | 1462x4 | 5 | 1468x8 | 5 | 1484x8 | 20 |
| 1460x8 | 20 | 1462x6 | 10 | 1469x4 | 5 | 145 | 10 |
| 1461x4 | 10 | 1462x8 | 4 | 1469x6 | 5 | CL-16-3 | 1 |
| 1461x6 | 10 | 1468x4 | 10 | 1469x8 | 5 | FC-16X | 1 |
| | | | | 1484x4 | 20 | W15310 | 5 |



AB-45 • AIR BRAKE FITTINGS ASSORTMENT

This assortment of draincocks, shutoffs and air brake fittings for use with 1/4", 3/8", 1/2" copper tubing is a must for jobbers and fleet service shops. Provides excellent coverage for air brake tube and hose service requirements. The large plastic drawers and the illustrated labels for the 15 drawer cabinet included in assortment make positive part selection simple and quick.

AB-45 Contents

| Catalog Number | Quantity | Catalog Number | Quantity | Catalog Number | Quantity | Catalog Number | Quantity |
|----------------|----------|----------------|----------|----------------|----------|----------------|----------|
| 1360x6 | 20 | 1368x6 | 10 | 145 | 10 | 6747 | 1 |
| 1360x8 | 20 | 1368x6x2 | 5 | 33806-A | 20 | 6748 | 1 |
| 1360x10 | 10 | 1368x6x6 | 5 | 33806-B | 5 | 6749 | 1 |
| 1360x12 | 10 | 1368x8 | 5 | 33806B-Y06 | 2 | FH-15X | 1 |
| 1361x6 | 20 | 1368x10 | 5 | 33806B-Y24 | 5 | FS-800 | 1 |
| 1361x8 | 5 | 1369x4x4 | 5 | 33806B-Y28 | 5 | W05465 | 5 |
| 1361x10 | 5 | 1369x6 | 10 | 33806B-Y34 | 5 | W14630 | 10 |
| 1362x4 | 5 | 1369x8 | 5 | 33806B-Y38 | 5 | W15310 | 5 |
| 1362x6 | 10 | 1380x6 | 5 | 6707 | 1 | W76150 | 5 |
| 1362x8 | 5 | 1390x6 | 5 | 6708 | 1 | W79850 | 3 |
| 1362x10 | 5 | 1391x6 | 5 | 6709 | 1 | W79851 | 3 |



AB-28 • AIR BRAKE FITTINGS ASSORTMENT

The 1/4", 3/8", 1/2" brass air brake fittings for use with copper tubing provide excellent coverage for fleets, independent repair shops and farm implement dealers doing service work.

With the AB-28 assortment you also receive a cabinet with clear plastic drawers plus illustrated, color-coded labels that assure fast, positive identification and selection of replacement fittings.

AB-28 Contents

| Catalog Number | Quantity | Catalog Number | Quantity | Catalog Number | Quantity | Catalog Number | Quantity |
|----------------|----------|----------------|----------|----------------|----------|----------------|----------|
| 1360x4 | 20 | 1361x10 | 5 | 1368x8 | 5 | 33806B-Y28 | 5 |
| 1360x6 | 20 | 1361x12 | 5 | 1369x4 | 5 | 33806B-Y34 | 5 |
| 1360x8 | 20 | 1362x6 | 5 | 1369x6 | 10 | 33806B-Y38 | 5 |
| 1360x10 | 10 | 1362x8 | 5 | 145 | 10 | CL-16-2 | 1 |
| 1360x12 | 10 | 1362x10 | 5 | 33806-A | 20 | FC-16X | 1 |
| 1361x4 | 5 | 1368x4 | 5 | 33806B-Y06 | 2 | W14630 | 10 |
| 1361x6 | 20 | 1368x6 | 10 | 33806B-Y24 | 5 | W15310 | 5 |
| 1361x8 | 5 | 1368x6x6 | 5 | | | | |