

# Molded Compression Tube Fittings

Plastic  
Fittings

▲ Refer to safety information regarding tubing selection on page 1.



## Weatherhead Molded Compression Tube Fittings

**Sizes:** Available in sizes 1/8" through 3/4" tube OD (7/8" tube OD and metric tube sizes available on request from Weatherhead Customer Satisfaction at 1-800-432-6006.)

**Materials:** Molded as standard in two materials: nylon and polypropylene

### *Nylon characteristics:*

- good resistance to organic solvents, oils, and gasoline
- excellent impact resistance
- tolerant to repeated steam for wash down and longtime weathering
- F.D.A. and N.S.F. listed
- operating temperatures -40°F to 200°F (-40°C to 93°C) – not to exceed temperature specification of tubing

### *Polypropylene characteristics:*

- good chemical and corrosion resistance
- opaque
- 20% glass filled
- N.S.F. listed
- operating temperatures -30°F to 200°F (-34°C to 93°C) – not to exceed temperature specification of tubing

Available on request in two materials: Celcon®\* (acetel copolymer) or KYNAR®\*\* (polyvinylidene fluoride)

**Styles:** Available in two standard styles:

*Ferrule Nut* (integral nut and sleeve for soft tubing to 50 PSI\*)

- features ferrule and nut molded as a single part, eliminating the need for a two-piece assembly

*Gripper Nut with separate plastic sleeve* (for sure-grip with plastic tubing up to 220 PSI\*)

- for higher pressure applications

### **Features and Benefits:**

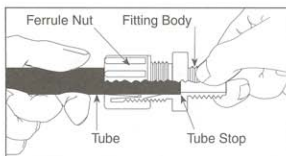
- leak-free performance
- high integrity in both mechanical and acoustical vibrations
- ten styles and over 400 part number configurations to meet your needs
- easy fitting assembly – no special tools or tube preparation necessary
- reliability in side-loaded applications allows for compact plumbing
- fittings are manufactured for use with PT200, PT240, and TP160 Boston Weatherhead plastic tubing
- fittings come fully assembled – for your convenience
- very low resistance to media flow resulting from material and internal surfaces
- no metal parts to corrode or present a safety hazard with aggressive chemicals
- ISO 9001 Certified

\* Celcon® is a registered trademark of Ticona.

\*\* KYNAR® is a registered trademark of Elf Atochem North America, Inc.

\* Operating temperatures of Weatherhead Tube Fittings are regulated by ambient and fluid temperatures, type of fluid being carried, tubing type and conditions of mechanical abuse. Pressures in excess of above specifications in all fitting sizes should be 129 tested by the customer in the particular application.

**WEATHERHEAD®**



## Molded Compression Tube Fittings Assembly Instructions

### Maximum Operating Pressure:

Ferrule Nut series = 50 PSI max

Gripper Nut series = 220 PSI max

Maximum operating pressures are dictated by the combination of tubing and fitting. The lowest pressure of the individual components will decide the actual operating pressure of the assembly.

### Temperature Range:

Nylon = -40°F to +200°F (-40°C to +93°C)

Polypropylene = -30°F to +200°F (-34°C to +93°C)

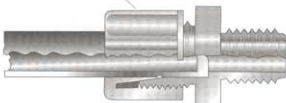
Ranges are at maximum operating pressures (refer to tubing temperature range). The overlap of temperature ranges of the individual components will decide the actual temperature range of the assembly.

### Used with:

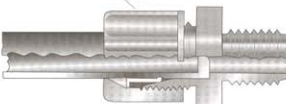
Weatherhead plastic tubing: TP160, PT200, and PT240.

Tube inserts are recommended for optimal performance with Weatherhead PT200 tubing.

**FERRULE NUT**  
WITH INTEGRAL SLEEVE  
LOW PRESSURE APPLICATIONS  
SOFT PLASTIC TUBING  
\*50 P.S.I.



**WITH PLASTIC GRIPPER**  
FOR USE WITH PLASTIC TUBING  
FOR SURE GRIP  
\*220 P.S.I.



### Assembly Instructions:

- Cut tubing to desired length; be sure the tube end is cut properly (maximum 10° cutting angle allowed).
- Insert the tubing through the back of the nut all the way through the nut assembly to the tube stop in the fitting body (see illustration). If the tubing does not enter the nut easily, loosen the nut one turn and then insert the tubing all the way to the tube stop in the fitting body.
- Turn the nut to hand-tight.
- Tighten the nut an additional 2 to 2-1/2 turns past hand-tight or until the nut bottoms against the fitting body, whichever comes first.
- All nuts must be retightened when the system reaches projected operating temperature.

## Ordering Information

Molded compression tube fittings are available in nylon and in polypropylene. They are also available by special order in KYNAR®\* (polyvinylidene fluoride) or Celcon®\* (acetal copolymer). To order fittings in KYNAR® or Celcon®, call Weatherhead Customer Satisfaction at 1-800-432-6006. Refer to Chemical Resistance Chart, pages 28-32. For detailed information on chemical compatibility, call Weatherhead Technical Support at 1-800-776-3262. General material characteristics are as follows:

**Nylon**, F.D.A. and N.S.F. listed, has good resistance to organic solvents, oils and gasoline. Good strength at high temperatures. Cold and hot-water applications. Longtime weathering resistance. Good impact resistance, both single and repeated. Not recommended for use with bleach, acids, or chlorine.

**Polypropylene**, N.S.F. listed, has good chemical resistance. Withstands continuous temperatures up to 215°F (not to exceed temperature specification of tubing). Unaffected by most weak acids, alkalies, alcohols and ketones. Do not use with oxidants or strong acids or in continuous sunlight. 20% glass filled for improved stiffness.

**KYNAR®**, an F.D.A. and N.S.F. listed polyvinylidene fluoride, has outstanding chemical resistance for handling highly corrosive fluids.

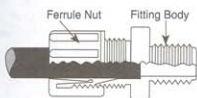
**Celcon®**, an acetal copolymer, N.S.F. listed and U.S.D.A. and F.D.A. listed for coffee, milk and antibiotics, has high tensile strength and good impact resistance over a broad temperature range. Translucent white color. Not affected by continuous hot-water service and works smoothly with metal tubing. Celcon® cannot be recommended for continuous exposure to solutions with a chlorine concentration greater than 1 ppm. Suggested maximum continuous-use temperature is 220°F in air and 180°F in water (not to exceed temperature specification of tubing). Unaffected by most inorganics, except sulfuric, nitric and hydrochloric acids. Should not be continuously exposed to sunlight.

Most fittings can be ordered with a GRIPPER style nut. Fittings with a GRIPPER style nut are capable of handling greater pressure than those with standard style nut. See page 131. For ordering fittings with 'GRIPPER' nut, add 'G' to the end of the part number (example: 1568x4x4G or 1568P4x4G). Some fittings are NOT available with the GRIPPER style nut, while others are ONLY available with the GRIPPER style nut, as noted on page 133-134. For more information, call Weatherhead Technical Support at 1-800-776-3262.

**NOTE:** It is not necessary to disassemble the fitting for assembly. Merely insert tubing to stop and tighten compression nut.

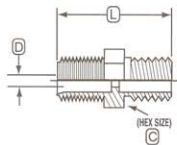
\* Celcon® is a registered trademark of Ticona.

\*\* KYNAR® is a registered trademark of Elf Atochem North America, Inc.



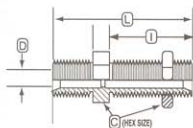
| Tube O.D.               | 1/8<br>(.125) | 1/4<br>(.250) | 5/16<br>(.312) | 3/8<br>(.375) | 1/2<br>(.500) | 5/8<br>(.625) | 3/4<br>(.750) |
|-------------------------|---------------|---------------|----------------|---------------|---------------|---------------|---------------|
| <b>Tube Thread Size</b> | 5/16-24       | 7/16-20       | 1/2-20         | 5/8-20        | 3/4-20        | 7/8-20        | 1-1/16-20     |

### Male Connector



| Tube O.D. | Male Pipe Thread | Catalog Number Nylon | Catalog Number Polypropylene | L    | D   | Hex C  |
|-----------|------------------|----------------------|------------------------------|------|-----|--------|
| 1/8       | 1/8              | 1568x2*              | 1568Px2*                     | .88  | .13 | 7/16   |
| 1/4       | 1/8              | 1568x4               | 1568Px4                      | .99  | .26 | 5/8    |
| 1/4       | 1/8              | 1568x4G              | 1568Px4G                     | .99  | .26 | 5/8    |
| 1/4       | 1/4              | 1568x4x4             | 1568Px4x4                    | 1.17 | .26 | 5/8    |
| 1/4       | 1/4              | 1568x4x4G            | 1568Px4x4G                   | 1.17 | .26 | 5/8    |
| 1/4       | 3/8              | 1568x4x6G*           | 1568Px4x6                    | 1.20 | .26 | 13/16  |
| 5/16      | 1/8              | 1568x5               | 1568Px5                      | 1.00 | .32 | 11/16  |
| 5/16      | 1/8              | 1568x5G              | 1568Px5G                     | 1.00 | .32 | 11/16  |
| 5/16      | 1/4              | 1568x5x4             | 1568Px5x4                    | 1.19 | .32 | 11/16  |
| 5/16      | 1/4              | 1568x5x4G            | 1568Px5x4G                   | 1.19 | .32 | 11/16  |
| 3/8       | 1/8              | 1568x6x2             | 1568Px6x2                    | 1.14 | .38 | 13/16  |
| 3/8       | 1/8              | 1568x6x2G            | 1568Px6x2G                   | 1.14 | .38 | 13/16  |
| 3/8       | 1/4              | 1568x6               | 1568Px6                      | 1.30 | .38 | 13/16  |
| 3/8       | 1/4              | 1568x6G              | 1568Px6G                     | 1.30 | .38 | 13/16  |
| 3/8       | 3/8              | 1568x6x6             | 1568Px6x6                    | 1.34 | .38 | 13/16  |
| 3/8       | 3/8              | 1568x6x6G            | 1568Px6x6G                   | 1.34 | .38 | 13/16  |
| 3/8       | 1/2              | 1568x6x8             | 1568Px6x8                    | 1.59 | .38 | 59/64  |
| 3/8       | 1/2              | 1568x6x8G            | 1568Px6x8G                   | 1.59 | .38 | 59/64  |
| 1/2       | 1/8              | 1568x8x2G*           | 1568Px8x2G*                  | 1.23 | .51 | 15/16  |
| 1/2       | 1/4              | 1568x8x4             | 1568Px8x4                    | 1.42 | .51 | 15/16  |
| 1/2       | 1/4              | 1568x8x4G            | 1568Px8x4G                   | 1.42 | .51 | 15/16  |
| 1/2       | 3/8              | 1568x8               | 1568Px8                      | 1.47 | .51 | 15/16  |
| 1/2       | 3/8              | 1568x8G              | 1568Px8G                     | 1.47 | .51 | 15/16  |
| 1/2       | 1/2              | 1568x8x8             | 1568Px8x8                    | 1.61 | .51 | 15/16  |
| 5/8       | 3/8              | 1568x10x6G*          | 1568Px10x6G*                 | 1.50 | .63 | 1-1/16 |
| 5/8       | 1/2              | 1568x10G*            | 1568Px10G*                   | 1.66 | .63 | 1-1/16 |
| 3/4       | 3/4              | 1568x12x12G*         | 1568Px12x12G*                | 1.92 | .76 | 1-5/16 |

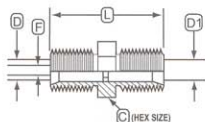
### Bulkhead Union



| Tube O.D. | Catalog Number Nylon | Catalog Number Polypropylene | L    | I    | D   | Hex C  |
|-----------|----------------------|------------------------------|------|------|-----|--------|
| 1/4       | 1574x4               | 1574Px4                      | 1.45 | .88  | .26 | 5/8    |
| 1/4       | 1574x4G              | 1574Px4G                     | 1.45 | .88  | .26 | 5/8    |
| 5/16      | 1574x5               | 1574Px5                      | 1.63 | .98  | .32 | 11/16  |
| 5/16      | 1574x5G              | 1574Px5G                     | 1.63 | .98  | .32 | 11/16  |
| 3/8       | 1574x6               | 1574Px6                      | 1.78 | 1.03 | .38 | 13/16  |
| 3/8       | 1574x6G              | 1574Px6G                     | 1.78 | 1.03 | .38 | 13/16  |
| 1/2       | 1574x8               | 1574Px8                      | 1.89 | 1.04 | .51 | 15/16  |
| 1/2       | 1574x8G              | 1574Px8G                     | 1.89 | 1.04 | .51 | 15/16  |
| 3/4       | 1574x12G*            | 1574Px12G*                   | 2.41 | 1.35 | .76 | 1-5/16 |

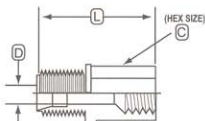
\* Not available with GRIPPER style nut \* Sold ONLY with GRIPPER style nut

To order with 'GRIPPER' nut, add 'G' to the end of the part # (Except where noted) Example: 1568x4x4G or 1568Px4x4G

**Union Connector**


| Tube<br>O.D. | Catalog<br>Number<br>Nylon | Catalog<br>Number<br>Polypropylene | L    | F   | Hex<br>C |
|--------------|----------------------------|------------------------------------|------|-----|----------|
| 1/4          | 1562x4                     | 1562Px4                            | .98  | .23 | 5/8      |
| 1/4          | 1562x4G                    | 1562Px4G                           | .98  | .23 | 5/8      |
| 5/16         | 1562x5                     | 1562Px5                            | 1.03 | .28 | 11/16    |
| 5/16         | 1562x5G                    | 1562Px5G                           | 1.03 | .28 | 11/16    |
| 3/8          | 1562x6                     | 1562Px6                            | 1.23 | .30 | 13/16    |
| 3/8          | 1562x6G                    | 1562Px6G                           | 1.23 | .30 | 13/16    |
| 1/2          | 1562x8                     | 1562Px8                            | 1.44 | .48 | 15/16    |
| 1/2          | 1562x8G                    | 1562Px8G                           | 1.44 | .48 | 15/16    |
| 5/8          | 1562x10G*                  | 1562Px10G*                         | 1.50 | .50 | 1-1/16   |
| 3/4          | 1562x12G*                  | 1562Px12G*                         | 1.75 | .64 | 1-5/16   |

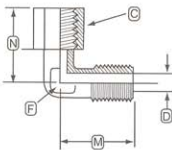
| Tube<br>O.D. | Tube<br>O.D. | Catalog<br>Number<br>Nylon | Catalog<br>Number<br>Polypropylene | L    | D   | Hex<br>C | D1  |
|--------------|--------------|----------------------------|------------------------------------|------|-----|----------|-----|
| 1/4          | 1/8          | 1562x4x2*                  | 1562Px4x2*                         | .92  | .26 | 5/8      | .13 |
| 5/16         | 1/4          | 1562x5x4*                  | 1562Px5x4G*                        | 1.00 | .32 | 11/16    | .26 |
| 3/8          | 1/4          | 1562x6x4                   | 1562Px6x4                          | 1.19 | .38 | 13/16    | .26 |
| 3/8          | 1/4          | 1562x6x4G                  | 1562Px6x4G                         | 1.19 | .38 | 13/16    | .26 |
| 1/2          | 3/8          | 1562x8x6                   | 1562Px8x6                          | 1.33 | .51 | 15/16    | .38 |
| 1/2          | 3/8          | 1562x8x6G                  | 1562Px8x6G                         | 1.33 | .51 | 15/16    | .38 |
| 5/8          | 3/8          | 1562x10x6G*                | 1562Px10x6G*                       | 1.34 | .63 | 1-1/16   | .38 |
| 5/8          | 1/2          | 1562x10x8G*                | 1562Px10x8G*                       | 1.47 | .63 | 1-1/16   | .51 |

**Female Connector**


| Tube<br>O.D. | Female<br>Pipe<br>Thread | Catalog<br>Number<br>Nylon | Catalog<br>Number<br>Polypropylene | L    | D   | Hex<br>C |
|--------------|--------------------------|----------------------------|------------------------------------|------|-----|----------|
| 1/4          | 1/8                      | 1566x4                     | 1566Px4                            | .92  | .23 | 9/16     |
| 1/4          | 1/8                      | 1566x4G                    | 1566Px4G                           | .92  | .23 | 9/16     |
| 1/4          | 1/4                      | 1566x4x4                   | 1566Px4x4                          | 1.09 | .22 | 11/16    |
| 1/4          | 1/4                      | 1566x4x4G                  | 1566Px4x4G                         | 1.09 | .22 | 11/16    |
| 5/16         | 1/4                      | 1566x5x4                   | 1566Px5x4                          | 1.22 | .28 | 11/16    |
| 5/16         | 1/4                      | 1566x5x4G                  | 1566Px5x4G                         | 1.22 | .28 | 11/16    |
| 3/8          | 1/4                      | 1566x6                     | 1566Px6                            | 1.20 | .36 | 11/16    |
| 3/8          | 1/4                      | N/A                        | 1566Px6G                           | 1.20 | .36 | 11/16    |
| 3/8          | 3/8                      | 1566x6x6                   | 1566Px6x6                          | 1.20 | .36 | 13/16    |
| 3/8          | 3/8                      | 1566x6x6G                  | 1566Px6x6G                         | 1.20 | .36 | 13/16    |
| 3/8          | 1/2                      | 1566x6x8                   | 1566Px6x8                          | 1.27 | .34 | 1-3/64   |
| 3/8          | 1/2                      | 1566x6x8G                  | 1566Px6x8G                         | 1.27 | .34 | 1-3/64   |
| 1/2          | 3/8                      | 1566x8                     | 1566Px8                            | 1.23 | .47 | 13/16    |
| 1/2          | 3/8                      | 1566x8G                    | 1566Px8G                           | 1.23 | .47 | 13/16    |
| 1/2          | 1/2                      | 1566x8x8                   | 1566Px8x8                          | 1.30 | .48 | 15/16    |
| 1/2          | 1/2                      | 1566x8x8G                  | 1566Px8x8G                         | 1.30 | .48 | 15/16    |
| 5/8          | 1/2                      | 1566x10G*                  | 1566Px10G*                         | 1.50 | .52 | 1-1/16   |

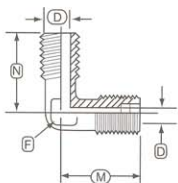
\*Sold ONLY with GRIPPER style nut

### Female Elbow



| Tube O.D. | Pipe Thread | Female               |                              | M    | N    | D   | Hex C  | Across Flats F |
|-----------|-------------|----------------------|------------------------------|------|------|-----|--------|----------------|
|           |             | Catalog Number Nylon | Catalog Number Polypropylene |      |      |     |        |                |
| 1/4       | 1/8         | 1570x4               | 1570Px4                      | .81  | .75  | .26 | 35/64  | 25/64          |
| 1/4       | 1/8         | N/A                  | 1570Px4G                     | .81  | .75  | .26 | 35/64  | 25/64          |
| 1/4       | 1/4         | 1570x4x4             | 1570Px4x4                    | .81  | .97  | .26 | 11/16  | 13/32          |
| 1/4       | 1/4         | N/A                  | 1570Px4x4                    | .81  | .97  | .26 | 11/16  | 13/32          |
| 5/16      | 1/4         | 1570x5x4G*           | 1570Px5x4G*                  | .94  | 1.00 | .32 | 11/16  | 7/16           |
| 3/8       | 1/4         | 1570x6               | 1570Px6                      | .94  | 1.02 | .38 | 51/64  | 37/64          |
| 3/8       | 1/4         | N/A                  | 1570Px6G                     | .94  | 1.02 | .38 | 51/64  | 37/64          |
| 3/8       | 3/8         | 1570x6x6             | 1570Px6x6                    | .91  | 1.03 | .38 | 13/16  | 9/16           |
| 3/8       | 3/8         | N/A                  | 1570Px6x6G                   | .91  | 1.03 | .38 | 13/16  | 9/16           |
| 1/2       | 3/8         | 1570x8               | 1570Px8                      | 1.09 | 1.13 | .51 | 51/64  | 23/32          |
| 1/2       | 3/8         | N/A                  | 1570Px8G                     | 1.09 | 1.13 | .51 | 51/64  | 23/32          |
| 1/2       | 1/2         | 1570x8x8             | 1570Px8x8                    | 1.09 | 1.34 | .51 | 15/16  | 23/32          |
| 1/2       | 1/2         | N/A                  | 1570Px8x8G                   | 1.09 | 1.34 | .51 | 15/16  | 23/32          |
| 5/8       | 1/2         | N/A                  | 1570Px10G*                   | 1.38 | 1.06 | .63 | 1-1/16 | 53/64          |

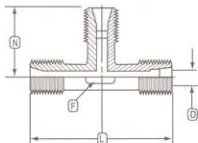
### Male Elbow



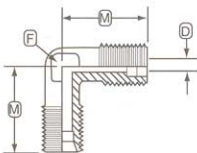
| Tube O.D. | Pipe Thread | Male                 |                              | M    | N    | D   | D1  | Across Flats F |
|-----------|-------------|----------------------|------------------------------|------|------|-----|-----|----------------|
|           |             | Catalog Number Nylon | Catalog Number Polypropylene |      |      |     |     |                |
| 1/8       | 1/8         | 1569x2*              | 1569Px2*                     | .56  | .63  | .11 | .20 | 1/4            |
| 1/4       | 1/8         | 1569x4               | 1569Px4                      | .81  | .81  | .22 | .25 | 3/8            |
| 1/4       | 1/8         | 1569x4G              | 1569Px4G                     | .81  | .81  | .22 | .25 | 3/8            |
| 1/4       | 1/4         | 1569x4x4             | 1569Px4x4                    | .81  | 1.02 | .22 | .28 | 3/8            |
| 1/4       | 1/4         | 1569x4x4G            | 1569Px4x4G                   | .81  | 1.02 | .22 | .28 | 3/8            |
| 1/4       | 3/8         | 1569x4x6             | 1569Px4x6                    | .84  | 1.09 | .23 | .38 | 9/16           |
| 1/4       | 3/8         | 1569x4x6G            | 1569Px4x6G                   | .84  | 1.09 | .23 | .38 | 9/16           |
| 5/16      | 1/8         | 1569x5               | 1569Px5                      | .89  | .906 | .30 | .25 | 7/16           |
| 5/16      | 1/8         | 1569x5G              | 1569Px5G                     | .89  | .906 | .30 | .25 | 7/16           |
| 5/16      | 1/4         | 1569x5x4             | 1569Px5x4                    | .91  | 1.08 | .25 | .23 | 7/16           |
| 5/16      | 1/4         | 1569x5x4G            | 1569Px5x4G                   | .91  | 1.08 | .25 | .23 | 7/16           |
| 3/8       | 1/4         | 1569x6               | 1569Px6                      | .94  | 1.03 | .30 | .31 | 37/64          |
| 3/8       | 1/4         | 1569x6G              | 1569Px6G                     | .94  | 1.03 | .30 | .31 | 37/64          |
| 3/8       | 3/8         | 1569x6x6             | 1569Px6x6                    | .94  | 1.09 | .34 | .38 | 9/16           |
| 3/8       | 3/8         | 1569x6x6G            | 1569Px6x6G                   | .94  | 1.09 | .34 | .38 | 9/16           |
| 1/2       | 1/4         | 1569x8x4G*           | 1569Px8x4G*                  | 1.06 | 1.09 | .39 | .31 | 11/16          |
| 1/2       | 3/8         | 1569x8               | 1569Px8                      | 1.09 | 1.13 | .39 | .31 | 11/16          |
| 1/2       | 3/8         | 1569x8G              | 1569Px8G                     | 1.09 | 1.13 | .39 | .31 | 11/16          |
| 1/2       | 1/2         | 1569x8x8             | 1569Px8x8                    | 1.09 | 1.28 | .47 | .36 | 11/16          |
| 1/2       | 1/2         | 1569x8x8G            | 1569Px8x8G                   | 1.09 | 1.28 | .47 | .36 | 11/16          |
| 5/8       | 3/8         | 1569x10x6G*          | 1569Px10x6G*                 | 1.25 | 1.25 | .52 | .38 | 27/32          |
| 5/8       | 1/2         | 1569x10G*            | 1569Px10G*                   | 1.25 | 1.44 | .52 | .50 | 13/16          |

\*Not available with GRIPPER style nut    \*Sold ONLY with GRIPPER style nut

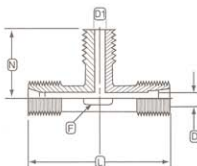


**Union Tee**


| Tube O.D.   | Catalog Number<br>Nylon | Catalog Number<br>Polypropylene | L    | D   | N    | Across Flats F |
|-------------|-------------------------|---------------------------------|------|-----|------|----------------|
| 1/8         | 1564x2*                 | 1564Px2*                        | 1.11 | .11 | .52  | 1/4            |
| 1/4         | 1564x4                  | 1564Px4                         | 1.44 | .22 | .72  | 23/64          |
| 1/4         | 1564x4G                 | 1564Px4G                        | 1.44 | .22 | .72  | 23/64          |
| 5/16        | 1564x5                  | 1564Px5                         | 1.61 | .28 | .83  | 7/16           |
| 5/16        | 1564x5G                 | 1564Px5G                        | 1.61 | .28 | .83  | 7/16           |
| 3/8         | 1564x6                  | 1564Px6                         | 1.91 | .30 | .97  | 17/32          |
| 3/8         | 1564x6G                 | 1564Px6G                        | 1.91 | .30 | .97  | 17/32          |
| 1/2         | 1564x8                  | 1564Px8                         | 2.13 | .48 | 1.03 | 11/16          |
| 1/2         | 1564x8G                 | 1564Px8G                        | 2.13 | .48 | 1.03 | 11/16          |
| 5/8         | 1564x10G*               | 1564Px10G*                      | 2.56 | .50 | 1.25 | 13/16          |
| 3/4         | 1564x12G*               | 1564Px12G*                      | 3.11 | .62 | 1.56 | 1-1/16         |
| 5/8-5/8-3/4 | 1564x10x10x6G*          | 1564Px10x10x6G*                 | 2.53 | .50 | 1.13 | 3/4            |

**Union Elbow**


| Tube O.D. | Catalog Number<br>Nylon | Catalog Number<br>Polypropylene | M    | D   | Across Flats F |
|-----------|-------------------------|---------------------------------|------|-----|----------------|
| 1/4       | 1565x4                  | 1565Px4                         | .81  | .22 | 3/8            |
| 1/4       | 1565x4G                 | 1565Px4G                        | .81  | .22 | 3/8            |
| 5/16      | 1565x5*                 | 1565Px5G*                       | .91  | .30 | 7/16           |
| 3/8       | 1565x6                  | 1565Px6                         | .94  | .34 | 9/16           |
| 3/8       | 1565x6G                 | 1565Px6G                        | .94  | .34 | 9/16           |
| 1/2       | 1565x8                  | 1565Px8                         | 1.06 | .39 | 43/64          |
| 1/2       | 1565x8G                 | 1565Px8G                        | 1.06 | .39 | 43/64          |
| 5/8       | 1565x10G*               | 1565Px10G*                      | 1.25 | .52 | 13/16          |

**Male Branch Tee**


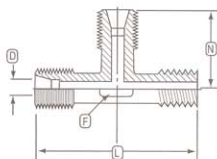
| Tube O.D. | Male Pipe Thread | Catalog Number<br>Nylon | Catalog Number<br>Polypropylene | L    | D   | N    | D1  | Across Flats F |
|-----------|------------------|-------------------------|---------------------------------|------|-----|------|-----|----------------|
| 1/4       | 1/8              | 1572x4                  | 1572Px4                         | 1.45 | .22 | .75  | .25 | 3/8            |
| 1/4       | 1/8              | 1572x4G                 | 1572Px4G                        | 1.45 | .22 | .75  | .25 | 3/8            |
| 1/4       | 1/4              | 1572x4x4x4              | 1572Px4x4x4G*                   | 1.45 | .22 | .92  | .31 | 3/8            |
| 1/4       | 1/4              | 1572x4x4x4G             | N/A                             | 1.45 | .22 | .92  | .31 | 3/8            |
| 5/16      | 1/4              | 1572x5x5x4G*            | 1572Px5x5x4                     | 1.61 | .30 | .98  | .31 | 27/64          |
| 5/16      | 1/4              | N/A                     | 1572Px5x5x4G                    | 1.61 | .30 | .98  | .31 | 27/64          |
| 3/8       | 1/4              | 1572x6                  | 1572Px6                         | 1.91 | .36 | 1.06 | .31 | 31/64          |
| 3/8       | 1/4              | 1572x6G                 | 1572Px6G                        | 1.91 | .36 | 1.06 | .31 | 31/64          |
| 3/8       | 3/8              | 1572x6x6x6              | 1572Px6x6x6                     | 1.91 | .36 | 1.11 | .38 | 1/2            |
| 3/8       | 3/8              | 1572x6x6x6G             | 1572Px6x6x6G                    | 1.91 | .36 | 1.11 | .38 | 1/2            |
| 1/2       | 3/8              | 1572x8                  | 1572Px8                         | 2.19 | .48 | 1.16 | .38 | 39/64          |
| 1/2       | 3/8              | 1572x8G                 | 1572Px8G                        | 2.19 | .48 | 1.16 | .38 | 39/64          |
| 1/2       | 1/2              | 1572x8x8x8              | 1572Px8x8x8                     | 2.19 | .48 | 1.31 | .48 | 5/8            |
| 1/2       | 1/2              | 1572x8x8x8G             | 1572Px8x8x8G                    | 2.19 | .48 | 1.31 | .48 | 5/8            |
| 5/8       | 1/2              | N/A                     | 1572Px10G*                      | 2.52 | .61 | 1.44 | .47 | 51/64          |
| 3/4       | 1/2              | N/A                     | 1572Px12G*                      | 3.09 | .64 | 1.61 | .56 | 1-3/64         |
| 3/4       | 3/4              | N/A                     | 1572Px12x12x12G*                | 3.09 | .64 | 1.63 | .69 | 1-3/64         |

\* Not available with GRIPPER style nut \* Sold ONLY with GRIPPER style nut

# Molded Compression Tube Fittings

Plastic  
Fittings

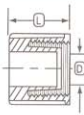
## Male Run Tee



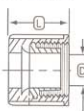
| Tube O.D. | Male Pipe Thread | Catalog Number Nylon | Catalog Number Polypropylene | L    | D   | N    | Across Flats F |
|-----------|------------------|----------------------|------------------------------|------|-----|------|----------------|
| 1/4       | 1/8              | 1571x4               | 1571Px4                      | 1.47 | .22 | .73  | 3/8            |
| 1/4       | 1/8              | 1571x4G              | 1571Px4G                     | 1.47 | .22 | .73  | 3/8            |
| 1/4       | 1/4              | 1571x4x4x4           | 1571Px4x4x4                  | 1.67 | .22 | .72  | 23/64          |
| 1/4       | 1/4              | 1571x4x4x4G          | 1571Px4x4x4G                 | 1.67 | .22 | .72  | 23/64          |
| 5/16      | 1/4              | 1571x5x4x5G*         | 1571Px5x4x5                  | 1.81 | .28 | .81  | 7/16           |
| 3/8       | 1/4              | 1571x6               | 1571Px6                      | 1.98 | .34 | .95  | 31/64          |
| 3/8       | 1/4              | 1571x6G              | 1571Px6G                     | 1.98 | .34 | .95  | 31/64          |
| 3/8       | 3/8              | 1571x6x6x6           | 1571Px6x6x6                  | 2.03 | .34 | .97  | 1/2            |
| 3/8       | 3/8              | 1571x6x6x6G          | 1571Px6x6x6G                 | 2.03 | .34 | .97  | 1/2            |
| 1/2       | 3/8              | 1571x8               | 1571Px8                      | 2.27 | .47 | 1.11 | 5/8            |
| 1/2       | 3/8              | 1571x8G              | 1571Px8G                     | 2.27 | .47 | 1.11 | 5/8            |
| 1/2       | 1/2              | 1571x8x8x8G*         | 1571Px8x8x8G*                | 2.41 | .47 | 1.11 | 39/64          |
| 5/8       | 1/2              | 1571x10G*            | 1571Px10G*                   | 2.72 | .61 | 1.25 | 3/4            |
| 3/4       | 1/2              | N/A                  | 1571Px12G*                   | 3.17 | .64 | 1.55 | 1-1/16         |

## Compression Nut

Ferrule Nuts with Integral Sleeve

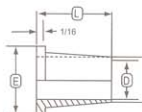


With Plastic Gripper



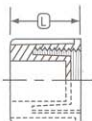
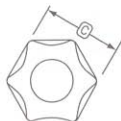
| Tube O.D. | Catalog Number Nylon | Catalog Number Polypropylene | Hex C | L   | D   |
|-----------|----------------------|------------------------------|-------|-----|-----|
| 1/8       | 1561x2               | 1561Px2                      | 7/16  | .52 | .13 |
| 1/4       | 1561x4               | 1561Px4                      | 5/8   | .63 | .26 |
| 5/16      | 1561x5               | 1561Px5                      | 11/16 | .69 | .32 |
| 3/8       | 1561x6               | 1561Px6                      | 13/16 | .75 | .38 |
| 1/2       | 1561x8               | 1561Px8                      | 15/16 | .88 | .51 |
| 1/4       | 1561x4G              | 1561Px4G                     | 5/8   | .69 | .26 |
| 5/16      | 1561x5G              | 1561Px5G                     | 11/16 | .75 | .32 |
| 3/8       | 1561x6G              | 1561Px6G                     | 13/16 | .73 | .38 |
| 1/2       | 1561x8G              | 1561Px8G                     | 15/16 | .88 | .51 |
| 5/8       | 1561x10G             | 1561Px10G                    | 1-1/8 | .88 | .63 |

## Insert



| Tube O.D. | Catalog Number Nylon | Catalog Number Polypropylene | E   | L   | D   |
|-----------|----------------------|------------------------------|-----|-----|-----|
| 1/4       | 1584x4               | 1584Px4                      | .25 | .38 | .12 |
| 5/16      | 1584x5               | 1584Px5                      | .31 | .40 | .14 |
| 3/8       | 1584x6               | 1584Px6                      | .37 | .50 | .20 |
| 1/2       | 1584x8               | 1584Px8                      | .49 | .56 | .30 |

PLASTIC

**Cap Nut**


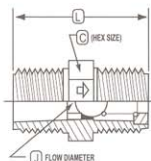
| Tube<br>O.D. | Catalog<br>Number<br>Nylon | Catalog<br>Number<br>Polypropylene | L   | Hex<br>C |
|--------------|----------------------------|------------------------------------|-----|----------|
| 1/8          | 1529x2                     | 1529Px2                            | .52 | 7/16     |
| 1/4          | 1529x4                     | 1529Px4                            | .63 | 5/8      |
| 5/16         | 1529x5                     | 1529Px5                            | .70 | 45/64    |
| 3/8          | 1529x6                     | 1529Px6                            | .73 | 13/16    |
| 1/2          | 1529x8                     | 1529Px8                            | .88 | 15/16    |

**Bulkhead Nut**


(HEX SIZE)



| Tube<br>O.D. | Catalog<br>Number<br>Nylon | Catalog<br>Number<br>Polypropylene | Hex<br>C |
|--------------|----------------------------|------------------------------------|----------|
| 1/4          | 1502x4                     | 1502Px4                            | 5/8      |
| 5/16         | 1502x5                     | 1502Px5                            | 11/16    |
| 3/8          | 1502x6                     | 1502Px6                            | 13/16    |
| 1/2          | 1502x8                     | 1502Px8                            | 15/16    |
| 3/4          | 1502x12                    | 1502Px12                           | 1-5/16   |

**KYNAR® Check Valve**


| Male Pipe<br>Size N.P.T.F. | Catalog<br>Number<br>KYNAR Only | L    | J   | Hex<br>C |
|----------------------------|---------------------------------|------|-----|----------|
| 1/8                        | 1531x2                          | 1.00 | .09 | 7/16     |
| 1/4                        | 1531x4                          | 1.41 | .19 | 5/8      |
| 3/8                        | 1531x6                          | 1.50 | .25 | 13/16    |
| 1/2                        | 1531x8                          | 1.81 | .34 | 15/16    |

**KYNAR®\*\* Check Valve features and benefits:**

- Viton® "O" Ring
- Stainless Ball & Spring
- Zero Leakage
- Maximum Operating Temp. 180°F @ 220 PSI
  - Cracking Pressure 1 to 2.5 PSI