

Gauges Sold Separately



Compact
Ports 1/4"-3/8"
Flow SCFM 20



Standard
Ports 3/8"-1/2"
Flow SCFM 75 150



Drip-Legs
Ports 1/2"

Coalescing Filters

Body Size	Port Size	Poly Bowl	Metal Bowl
1/4"	1/4"	4017	4016
1/4"	3/8"	4019	4018

Body Size	Port Size	Poly Bowl	Metal Bowl
3/8"	1/4"	4012A-99	
3/8"	3/8"	4022A-99	
1/2"	3/8"	4038/56-204	4023
1/2"	1/2"	4033/56-208	4037

Port Size	Poly Bowl	Metal Bowl
1/2"	4034	4035

Parts & Accessories

Body Size	.01 µm Element	Poly Bowl	Metal Bowl	Mounting Bracket	Semi Auto Drain
1/4"	4089	4056	4057	4760	4086

Parts & Accessories

Body Size	.01µm Element	Poly Bowl	Metal Bowl	Mounting Bracket	Rplc. Sight Glass	Bowl O-Ring
1/2"	4097	4095	4094	4772	4278	4783

Parts & Accessories

Port Size	Poly Bowl	Metal Bowl	Auto Drain
1/2"	4074A-99	4079A-99	4060

Specifications

Fluid: Compressed Air
Maximum Inlet Pressure –
Transparent Bowl: 150 psig (10.3 bar)
Metal Bowl: 250 psig (17.2 bar)
Maximum Temperature –
Transparent Bowl: 125°F (52°C)
Metal Bowl: 150°F (66°C)

Specifications

Fluid: Compressed Air
Maximum Inlet Pressure –
Transparent Bowl: 150 psig (10.3 bar)
Metal Bowl: 250 psig (17.2 bar)
Maximum Temperature –
Transparent Bowl: 125°F (52°C)
Metal Bowl: 150°F (66°C)

Specifications

Fluid: Compressed Air
Maximum Inlet Pressure –
Transparent Bowl: 150 psig (10.3 bar)
Metal Bowl: 250 psig (17.2 bar)
Maximum Temperature –
Transparent Bowl: 125°F (52°C)
Metal Bowl: 150°F (66°C)



Miniature
Ports 1/4"
Flow SCFM 20



Compact
Ports 1/4"-3/8"
Flow SCFM 50



Standard
Ports 1/4"-3/8"-1/2"-3/4"-1"
SCFM 70 -150 -425

Regulators

Body Size	Port Size	Without Gauge	With Gauge
Mini	1/4"	4100/4102*	4100D/56-110

Body Size	Port Size	Without Gauge
1/4"	1/4"	4119
1/4"	3/8"	4118

Body Size	Port Size	Without Gauge
3/8"	1/4"	4115A-99/56-341-99 4116-99 w/ panel nut
3/8"	3/8"	4125A-99/56-355 4126-99 w/ panel nut
1/2"	1/2"	4135/56-344
1/2"	3/4"	4145
1"	3/4"	4141
1"	1"	4155/56-346

Parts & Accessories

Body Size	Mounting Bracket	Panel Nut	Reg. Repair Kit	Rplc. Knob
Mini	4160	4161	4166	4790

Parts & Accessories

Body Size	Mounting Bracket w/ Panel	Panel Nut	Reg. Repair Kit	Rplc. Knob
1/4"	4760	4763	4757	4791

Parts & Accessories

Body Size	Mounting Bracket w/Panel	Panel Nut	Reg. Repair Kit	Rplc. Knob
3/8"	4162A-99	4778	4167A	4792
1/2"	4772	4773	4776	4793
1"	4165		4169	Non-Rplc

* Non-Repairable Regulator

Specifications

Fluid: Compressed Air
Maximum Inlet Pressure: 300 psig
Temperature Range –
Mini: 0° to 150°F
All Others: 0° to 175°F
Gauge Port: 2-1/8" NPT (full flow)
Outlet Range: 5 - 125 psi

Specifications

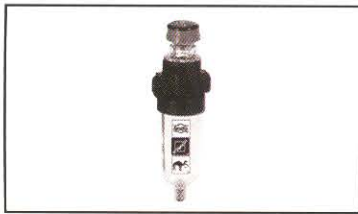
Fluid: Compressed Air
Maximum Inlet Pressure: 300 psig
Temperature Range: 0° to 150° F
Gauge Port: 2-1/8" NPT (full flow)
Outlet Range: 5 - 125 psi

Specifications

Fluid: Compressed Air
Maximum Inlet Pressure: 300 psig
Temperature Range: 0° to 175° F
Gauge Port: 2-1/4" NPT (full flow)
Outlet Range: 5 - 125 psi

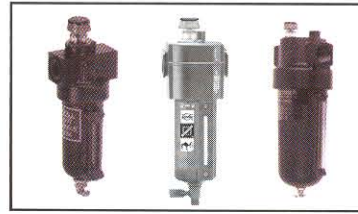


Gauges Sold Separately



Miniature

Ports1/4"
SCFM.....5



Standard

Ports1/4"-3/8"-1/2"-3/4"-1"
SCFM..... 35 -150 -425

Lubricator - Microfog

Body Size	Port Size	Poly Bowl
Mini	1/4"	4200/56-120

Parts & Accessories

Body Size	Poly Bowl	Metal Bowl	Mount. Bracket	Seal Kit	Fill Plug	Bowl O-Ring
Mini	4264	4269	4160	4171	4794	4780

Specifications

Fluid: Compressed Air
Maximum Inlet Pressure –
Transparent Bowl: 150 psig
Metal Bowl: 250 psig
Maximum Temperature –
Transparent Bowl: 125°F
Metal Bowl: 175°F



Compact

Ports1/4"-3/8"
SCFM.....50

Body Size	Port Size	Poly Bowl	Metal Bowl
3/8"	1/4"	4215A-99/56-376	4214A-99
3/8"	3/8"	4225A-99/56-374	4226A-99
1/2"	3/8"	4219	4218
1/2"	1/2"	4235/56-378	4236/56-380
1/2"	3/4"	4245	4246
1"	1"		4255

Parts & Accessories

Body Size	Poly Bowl	Metal Bowl	Mount. Bracket	Panel Nut	Adj. Dome	Seal Kit	Fill Plug	Bowl O-Ring
3/8"	4265A-99	4269	4071A	N/A	4283		4795	4782
1/2"	4285	4286	4772	4773	4283	4284	4796	4783
1"		4272	4090	N/A	4283		4797	4781

Specifications

Fluid: Compressed Air
Maximum Inlet Pressure –
Transparent Bowl: 150 psig
Metal Bowl: 250 psig
Maximum Temperature –
Transparent Bowl: 125°F
Metal Bowl: 175°F



Standard

Ports1/4"-3/8"-1/2"-3/4"-1"
SCFM..... 35 -150 -425

Lubricator - Oil Fog

Body Size	Port Size	Poly Bowl	Metal Bowl
1/4"	1/4"	4232	4233
1/4"	3/8"	4239	4238

Parts & Accessories

Body Size	Poly Bowl	Metal Bowl	Mount. Bracket	Panel Nut	Adj. Dome	Fill Plug
1/4"	4058	4059	4760	4763	4282	4798

Specifications

Fluid: Compressed Air
Maximum Inlet Pressure –
Transparent Bowl: 150 psig
Metal Bowl: 250 psig
Maximum Temperature –
Transparent Bowl: 125°F
Metal Bowl: 175°F

Body Size	Port Size	Poly Bowl	Metal Bowl
3/8"	1/4"	4210A-99	4211A-99
3/8"	3/8"	4220A-99	4221A-99
1/2"	1/2"	4230	4231
1/2"	3/4"	4240	4241
1"	1"	4242	4250

Parts & Accessories

Body Size	Poly Bowl	Metal Bowl	Mount. Bracket	Adj. Dome	Fill Plug	Bowl O-Ring	Drain Kit
3/8"	4265A-99	4270A-99	4071A-99	4282	4795	4782	
1/2"	4285	4286	4772	4282	4796	4783	
1"		4272	4090	4282	4797	4781	4096

Specifications

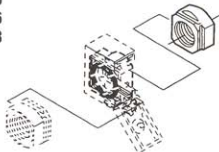
Fluid: Compressed Air
Maximum Inlet Pressure –
Transparent Bowl: 150 psig
Metal Bowl: 250 psig
Maximum Temperature –
Transparent Bowl: 125°F
Metal Bowl: 175°F

Accessories and Components for New Modular 1/4, 3/8 and 1/2" Body Size FRLs

Dimensions in inches (mm)

Quickmount Pipe Adapters

Port Size and Thread	AmFlo No. (1 pack)	Use with the Quickclamp to provide threaded connections to the system piping.
Compact		Each pipe adapter adds:
1/4" PTF	4764	.063" (15.9 mm) to the overall length of a combination unit.
3/8" PTF	4765	
Modular 1/2" Body Style		.71" (18 mm) to the overall length of a combination unit.
1/4" PTF	4767	
3/8" PTF	4755	
1/2" PTF	4756	
3/4" PTF	4768	



Quickclamp Wall Mounting Bracket

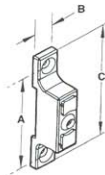
Use with the preceding Quickclamp to provide secure mounting to a wall, machine panel or other flat surface.

Compact Style **4759**

Use 3/16" (5mm) screws to mount bracket to wall.

Modular 1/2" (1mm) body size **4770**

Use 7/32" (6 mm) screws to mount bracket to wall.



	A	B	C
Compact	2/32(59)	0.55 (14)	2.91 (74)
Modular	3.25 (83)	0.95 (24)	4.0 (102)

Quickclamp

AmFlo Number

Compact Style 4761

Modular 1/2 Body 4769

Maximum Pressure: 250 psig (17 bar)

Maximum Temperature:

Compact 150°F (65°C)

Modular 175°F (79°C)

Use with all compact and 1/2" modular products to provide modular installation capability. Flanges on the products slide into V grooves in the Quickclamp. Two face-sealing o-rings in the Quickclamp provide a positive seal when the clamp is closed and the captive screw is tightened.

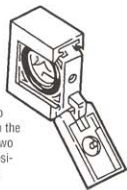
A Quickclamp adds:

Compact

0.26" (5.5 mm) to the overall length of a combination unit. Screw with a 5/32" (4mm) hex or a T25 Torx wrench.

Modular

0.54" (13.6 mm) to the overall length of a combination unit. Screw with a 5/32" (4 mm) hex or a T25 Torx wrench.



4162A-99

Quickclamp and Wall Mounting Bracket

AmFlo Number:

Compact Style 4762

Modular 1/2 Body 4771

See preceding paragraphs for descriptions and dimensions.

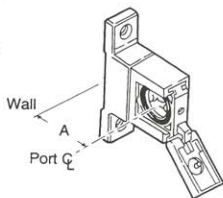
Compact

Use 3/16" (6mm) screws to mount bracket to wall.

Modular

Use 7/32" (6mm) screws to mount bracket to wall.

Compact -
1/50" (38)
Modular - 2.00"
(51)



Wall Mounting Bracket

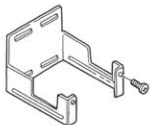
Use to secure compact and 1/2" modular single units.

AmFlo Numbers:

Compact style **4760**

Modular 1/2" body style **4772**

Use 3/16" (5mm) screws to mount bracket to wall.



Panel Nut

Use to panel mount new modular 1/2" reg. and 1/2" combinations.

AmFlo Number:

4763

(Plastic) Compact

4773

(Zinc) Modular

