

# Filters, Regulators, Lubricators

Gauges Sold Separately.



### Miniature

Ports .....1/4"  
SCFM.....5



### Compact

Ports .....1/4"  
SCFM.....50



### Standard

Ports ....1/4"-3/8"-1/2"-3/4"-1"  
SCFM.... 75 -150 425

## Regulator - Filter - Lubricator

| Body Size | Port Size | Poly Bowl |
|-----------|-----------|-----------|
| Mini      | 1/4"      | 4405      |

### Parts & Accessories

| Body Size | 40 µm Element | 5 µm Element | Reg. Repair Kit | Rplc Knob | Bowl O-Ring | Fill Plug |
|-----------|---------------|--------------|-----------------|-----------|-------------|-----------|
| Mini      | 4066A-99      | 4063A-99     | 4166            | 4790      | 4780        | 4794      |

| Body Size | FILTERS   |            |           | LUBRICATOR |      |
|-----------|-----------|------------|-----------|------------|------|
|           | Poly Bowl | Metal Bowl | Poly Bowl | Metal Bowl | Bowl |
| Mini      | 4073      | 4078       | 4264      | 4269       |      |

### Specifications

Fluid: Compressed Air  
Maximum Inlet Pressure –  
Transparent Bowl: 150 psig  
Metal Bowl: 250 psig  
Maximum Temperature –  
Transparent Bowl: 125°F  
Metal Bowl: 175°F  
Gauge Port: 2-1/8" NPT (full flow)  
Outlet Range: 5 - 125 psi

| Body Size | Port Size | Poly Bowl | Metal Bowl |
|-----------|-----------|-----------|------------|
| 1/4"      | 1/4"      | 4409      | 4412       |

### Parts & Accessories

| Body Size | 40 µm Element | Mounting Bracket | Fill Plug | Reg. Repair Kit |
|-----------|---------------|------------------|-----------|-----------------|
| 1/4"      | 4087          | 4759             | 4798      | 4757            |

| Body Size | FILTERS   |            |           | LUBRICATOR |      |
|-----------|-----------|------------|-----------|------------|------|
|           | Poly Bowl | Metal Bowl | Poly Bowl | Metal Bowl | Bowl |
| 1/4"      | 4056      | 4057       | 4058      | 4059       |      |

### Specifications

Fluid: Compressed Air  
Maximum Inlet Pressure –  
Transparent Bowl: 150 psig  
Metal Bowl: 250 psig  
Maximum Temperature –  
Transparent Bowl: 125°F  
Metal Bowl: 175°F  
Gauge Port: 2-1/8" NPT (full flow)  
Outlet Range: 5 - 125 psi

| Body Size | Port Size | Poly Bowl | Metal Bowl |
|-----------|-----------|-----------|------------|
| 3/8"      | 1/4"      | 4410A-99  | 4411A-99   |
| 3/8"      | 3/8"      | 4420A-99  | 4421A-99   |
| 1/2"      | 1/2"      | 4430      | 4431       |
| 1/2"      | 3/4"      | 4440      | 4441       |
| 1"        | 1"        |           | 4450       |

### Parts & Accessories

| Body Size | 40 µm Element | 5 µm Element | Mount. Bracket | Reg. Repair Kit | Fill Plug | Rplc Knob |
|-----------|---------------|--------------|----------------|-----------------|-----------|-----------|
|-----------|---------------|--------------|----------------|-----------------|-----------|-----------|

|      |          |          |          |       |      |           |
|------|----------|----------|----------|-------|------|-----------|
| 3/8" | 4066A-99 | 4063A-99 | 4071A-99 | 4167A | 4795 | 4782 4792 |
| 1/2" | 4093     | 4092     | 4770     | 4776  | 4796 | 4783 4793 |
| 1"   | 4068     | 4065     | 4165     | 4169  | 4797 | 4781      |

| Body Size | FILTERS   |            |           | LUBRICATOR |      |
|-----------|-----------|------------|-----------|------------|------|
|           | Poly Bowl | Metal Bowl | Poly Bowl | Metal Bowl | Bowl |
| 3/8"      | 4074A-99  | 4079A-99   | 4265A-99  | 4269       |      |
| 1/2"      | 4095      | 4094       | 4285      | 4286       |      |
| 1"        |           | 4272       |           | 4272       |      |

### Specifications

Fluid: Compressed Air  
Maximum Inlet Pressure –  
Transparent Bowl: 150 psig  
Metal Bowl: 250 psig  
Maximum Temperature –  
Transparent Bowl: 125°F  
Metal Bowl: 175°F  
Gauge Port: 2-1/4" NPT (full flow)  
Outlet Range: 5 - 125 psi

Gauges Sold Separately.



### Compact

Ports .....1/4"  
SCFM ..... 50



### Standard

Ports .....1/4"-3/8"-1/2"-3/4"  
SCFM..... 75 -150

## Combination Units Filter - Regulator

| Body Size | Port Size | Poly Bowl | Metal Bowl |
|-----------|-----------|-----------|------------|
| 1/4"      | 1/4"      | 4512      | 4513       |

### Parts & Accessories

| Body Size | 40 µm Element | Poly Bowl | Metal Bowl | Mounting Bracket | Reg. Repair Kit | Rplc. Knob |
|-----------|---------------|-----------|------------|------------------|-----------------|------------|
| 1/4"      | 4087          | 4056      | 4057       | 4759             | 4757            | 4791       |

### Specifications

Fluid: Compressed Air  
Maximum Inlet Pressure – Transparent Bowl: 150 psig  
Metal Bowl: 250 psig  
Maximum Temperature – Transparent Bowl: 125°F  
Metal Bowl: 175°F  
Gauge Port: 2-1/8" NPT (full flow)  
Outlet Range: 5 - 125 psi

| Body Size | Port Size | Poly Bowl | Metal Bowl |
|-----------|-----------|-----------|------------|
| 3/8"      | 1/4"      | 4510A-99  |            |
| 3/8"      | 3/8"      | 4520A-99  |            |
| 1/2"      | 1/2"      | 4530      | 4531       |
| 1/2"      | 3/4"      | 4540      | 4541       |

### Parts & Accessories

| Body Size | 40 µm Element | Poly Bowl | Metal Bowl | Mounting Bracket | Reg. Repair Kit | Bowl O-Ring | Rplc. Knob |
|-----------|---------------|-----------|------------|------------------|-----------------|-------------|------------|
| 3/8"      | 4060A         | 4074A-99  | 4079A-99   | 4071A-99         | 4167A           | 4782        | 4792       |
| 1/2"      | 4093          | 4095      | 4094       | 4770             | 4776            | 4783        | 4793       |

### Specifications

Fluid: Compressed Air  
Maximum Inlet Pressure – Transparent Bowl: 150 psig  
Metal Bowl: 250 psig  
Maximum Temperature – Transparent Bowl: 125°F  
Metal Bowl: 175°F  
Gauge Port: 2-1/4" NPT (full flow)  
Outlet Range: 5 - 125 psi



### Compact

Ports .....1/4"  
SCFM ..... 50



### Standard

Ports .....3/8"-1/2"-3/4"  
SCFM..... 75 -150

## Combination Regulator - Lubricator

| Body Size | Port Size | Poly Bowl | Metal Bowl |
|-----------|-----------|-----------|------------|
| 1/4"      | 1/4"      | 4609      | 4612       |

### Parts & Accessories

| Body Size | 40 µm Element | Poly Bowl | Metal Bowl | Mounting Bracket | Reg. Repair Kit | Rplc. Knob | Fill Plug |
|-----------|---------------|-----------|------------|------------------|-----------------|------------|-----------|
| 1/4"      | 4087          | 4056      | 4057       | 4759             | 4757            | 4791       | 4798      |

### Specifications

Fluid: Compressed Air  
Maximum Inlet Pressure – Transparent Bowl: 150 psig  
Metal Bowl: 250 psig  
Maximum Temperature – Transparent Bowl: 125°F  
Metal Bowl: 175°F  
Gauge Port: 2-1/8" NPT (full flow)  
Outlet Range: 5 - 125 psi

| Body Size | Port Size | Poly Bowl | Metal Bowl |
|-----------|-----------|-----------|------------|
| 3/8"      | 3/8"      | 4620A-99  | 4621A-99   |
| 1/2"      | 1/2"      | 4630      |            |
| 1/2"      | 3/4"      | 4640      | 4641       |

### Parts & Accessories

| Body Size | 40 µm Element | Poly Bowl | Metal Bowl | Mounting Bracket | Reg. Repair Kit | Body Size | Rplc. Knob | Bowl O-Ring |
|-----------|---------------|-----------|------------|------------------|-----------------|-----------|------------|-------------|
|-----------|---------------|-----------|------------|------------------|-----------------|-----------|------------|-------------|

|      |          |          |      |       |       |      |      |      |      |
|------|----------|----------|------|-------|-------|------|------|------|------|
| 3/8" | 4066A-99 | 4265A-99 | 4269 | 4162A | 4167A | 3/8" | 4792 | 4795 | 4782 |
| 1/2" | 4093     | 4285     | 4286 | 4770  | 4776  | 1/2" | 4793 | 4796 | 4783 |

### Specifications

Fluid: Compressed Air  
Maximum Inlet Pressure – Transparent Bowl: 150 psig  
Metal Bowl: 250 psig  
Maximum Temperature – Transparent Bowl: 125°F  
Metal Bowl: 175°F  
Gauge Port: 2-1/4" NPT (full flow)  
Outlet Range: 5 - 125 psi

# Filters, Regulators, Lubricators

Gauges Sold Separately.



## Compact

Ports .....1/4"-3/8"  
SCFM .....50



## Standard

Ports .....1/4"-3/8"-1/2"-3/4"  
SCFM ..... 75 -150

### Regulator/Filter - Lubricator

| Body Size | Port Size | Poly Bowl | Metal Bowl |
|-----------|-----------|-----------|------------|
| 1/4"      | 1/4"      | 4709      | 4712       |

| Body Size | Port Size | Poly Bowl | Metal Bowl |
|-----------|-----------|-----------|------------|
| 3/8"      | 1/4"      | 4710A-99  | 4711A-99   |
| 3/8"      | 3/8"      | 4720A-99  | 4721A-99   |
| 1/2"      | 1/2"      | 4730      | 4731       |
| 1/2"      | 3/4"      | 4740      | 4741       |

### Parts & Accessories

| Body Size | 40 µm Element | Mounting Bracket | Reg. Repair Kit | Rplc. Knob | Fill Plug |
|-----------|---------------|------------------|-----------------|------------|-----------|
| 1/4"      | 4087          | 4760             | 4757            | 4791       | 4798      |

| Body Size | FILTER    |            | LUBRICATOR |            |
|-----------|-----------|------------|------------|------------|
|           | Poly Bowl | Metal Bowl | Poly Bowl  | Metal Bowl |
| 1/4"      | 4056      | 4057       | 4058       | 4059       |

### Specifications

Fluid: Compressed Air  
Maximum Inlet Pressure –  
Transparent Bowl: 150 psig  
Metal Bowl: 250 psig  
Maximum Temperature –  
Transparent Bowl: 125°F  
Metal Bowl: 175°F  
Gauge Port: 2-1/8" NPT (full flow)  
Outlet Range: 5 - 125 psi

### Parts & Accessories

| Port Size | 40 µm Element | Mounting Bracket | Reg. Repair Kit | Rplc. Knob | Bowl O-Ring | Fill Plug |
|-----------|---------------|------------------|-----------------|------------|-------------|-----------|
| 3/8"      | 4066A-99      | 4162A-99         | 4167A           | 4792       | 4782        | 4795      |
| 1/2"      | 4093          | 4770             | 4776            | 4793       | 4783        | 4796      |

| Port Size | FILTER    |            | LUBRICATOR |            |
|-----------|-----------|------------|------------|------------|
|           | Poly Bowl | Metal Bowl | Poly Bowl  | Metal Bowl |
| 3/8"      | 4074A-99  | 4079A-99   | 4265A-99   | 4269       |
| 1/2"      | 4095      | 4094       | 4285       | 4286       |

### Specifications

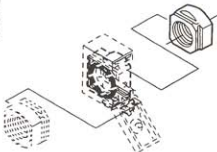
Fluid: Compressed Air  
Maximum Inlet Pressure –  
Transparent Bowl: 150 psig  
Metal Bowl: 250 psig  
Maximum Temperature –  
Transparent Bowl: 125°F  
Metal Bowl: 175°F  
Gauge Port: 2-1/8" NPT (full flow)  
Outlet Range: 5 - 125 psi

## Accessories and Components for New Modular 1/4, 3/8 and 1/2" Body Size FRLs

Dimensions in inches (mm)

### Quickmount Pipe Adapters

| Port Size and Thread    | AmFlo No. (1 pack) | Use with the Quickclamp to provide threaded connections to the system piping. |
|-------------------------|--------------------|---|
| Compact                 |                    | Each pipe adapter adds:   |
| 1/4" PTF                | <b>4764</b>        | .063" (15.9 mm) to the overall length of a combination unit.                  |
| 3/8" PTF                | <b>4765</b>        |   |
| Modular 1/2" Body Style |                    | .71" (18 mm) to the overall length of a combination unit.                     |
| 1/4" PTF                | <b>4767</b>        |   |
| 3/8" PTF                | <b>4755</b>        |   |
| 1/2" PTF                | <b>4756</b>        |   |
| 3/4" PTF                | <b>4768</b>        |   |



### Quickclamp Wall Mounting Bracket

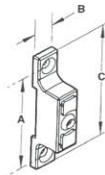
Use with the preceding Quickclamp to provide secure mounting to a wall, machine panel or other flat surface.

Compact Style **4759**

Use 3/16" (5mm) screws to mount bracket to wall.

Modular 1/2" (1mm) body size **4770**

Use 7/32" (6 mm) screws to mount bracket to wall.



|                | A         | B         | C         |
|----------------|-----------|-----------|-----------|
| <b>Compact</b> | 2/32(59)  | 0.55 (14) | 2.91 (74) |
| <b>Modular</b> | 3.25 (83) | 0.95 (24) | 4.0 (102) |

### Quickclamp

**AmFlo Number**

**Compact Style 4761**

**Modular 1/2 Body 4769**

Maximum Pressure: 250 psig (17 bar)

Maximum Temperature:

Compact 150°F (65°C)

Modular 175°F (79°C)

Use with all compact and 1/2" modular products to provide modular installation capability. Flanges on the products slide into V grooves in the Quickclamp. Two face-sealing o-rings in the Quickclamp provide a positive seal when the clamp is closed and the captive screw is tightened.

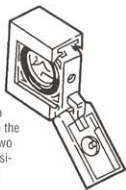
A Quickclamp adds:

#### Compact

0.26" (5.5 mm) to the overall length of a combination unit. Screw with a 5/32" (4mm) hex or a T25 Torx wrench.

#### Modular

0.54" (13.6 mm) to the overall length of a combination unit. Screw with a 5/32" (4 mm) hex or a T25 Torx wrench.



**4162A-99**

### Quickclamp and Wall Mounting Bracket

**AmFlo Number:**

**Compact Style 4762**

**Modular 1/2 Body 4771**

See preceding paragraphs for descriptions and dimensions.

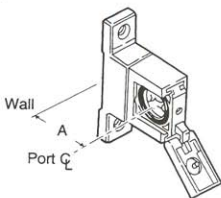
#### Compact

Use 3/16" (6mm) screws to mount bracket to wall.

#### Modular

Use 7/32" (6mm) screws to mount bracket to wall.

Compact -  
1/50" (38)  
Modular - 2.00"  
(51)



### Panel Nut

Use to panel mount new modular 1/2" reg. and 1/2" combinations.

**AmFlo Number:**

**4763**

(Plastic) Compact

**4773**

(Zinc) Modular



### Wall Mounting Bracket

Use to secure compact and 1/2" modular single units.

**AmFlo Numbers:**

Compact style **4760**

Modular 1/2" body style **4772**

Use 3/16" (5mm) screws to mount bracket to wall.

