

## Air Preparation Equipment

### Compressed Air Systems

To set up an efficient air system, several things should be considered: Proper flow of air by using the right size equipment; filters should be used to remove foreign matter from the air to prolong tool life; regulators should be used where air needs to be regulated to maintain proper pressure; and lubricators should be used where pneumatic air tools require lubrication.

Filters	Regulators	Lubricators
<p>Contaminants from the atmosphere (dust, moisture, pollutants) are drawn into the air system at the compressor intake. Sludge, oil and foreign matter may be added to the air systems by the compressor itself. Contaminated air can interfere with the air driven device operation and, in time, damage it. Compressed air filters, installed upstream from the air driven device, remove contaminants as well as most water condensate from the flowing compressed air. Some applications require extremely clean air virtually free of oil aerosols, vapors, and hydrocarbons. Oil removal (coalescing) and oil vapor removal (adsorbing) filters are used in these applications.</p>	<p>Air driven devices are designed to work at a certain pressure. Most devices will operate at pressures in excess of that recommended. However, operating at higher pressures can cause excess torque, force and wear and can waste compressed air. The best operation and life of the device can be obtained by using the correct pressure level. A regulator is used to reduce and maintain the pressure at a level required by the device.</p>	<p>Most moving parts require some type of lubrication. The efficiency of cylinders, valves and air motors can be greatly improved if they are supplied with the required lubrication. Air driven devices can be lubricated by using an air line lubricator, a device for adding lubrication oil in aerosol form into the compressed air line. The air passing through the lubricator transports the lubricant to air tools, cylinders or other air driven devices where the lubricant is deposited on moving and sliding surfaces to reduce friction and wear. Most lubricators have a proportional oil delivery feature which automatically provides a nearly constant oil-to-air ratio over a wide range of air flows.</p>
	<p><b>Filter/Regulators</b></p> <p>A filter/regulator combines the functions of a filter and a regulator, as described in the previous paragraphs, into one compact space-saving unit.</p>	

SCFM = "Cubic ft/min" at Standard Ambient Condition      Gauges Sold Separately



### Miniature

Ports ..... 1/4"  
Flow SCFM ..... 21



### Compact

Ports ..... 1/4"-3/8"  
Flow SCFM ..... 1/4" - 53 - 3/8" 80



### Standard

Ports ..... 1/2"  
Flow SCFM ..... 130

## Filters - Construction

Body Size	Port Size	Poly Bowl
Mini	1/4"	3000

Body Size	Port Size	Poly Bowl	Metal Bowl
3/8"	1/4"	3010A	
3/8"	3/8"	3020A	3021A

Body Size	Port Size	Poly Bowl
1/2"	1/2"	3030

### Parts & Accessories

Body Size	5 µm Element	Poly Bowl	Mounting Bracket
Mini	3062	3073	3076

### Parts & Accessories

Body Size	40 µm Element	5 µm Element	Poly Bowl	*Metal Bowl	Mounting Bracket	Auto Drain Kit
3/8"	3066	3063	3074	3079	3071	3060

### Parts & Accessories

Body Size	40 µm Element	5 µm Element	Poly Bowl	Mounting Bracket	Auto Drain Kit
1/2"	3067	3064	3075	3072	3060

### Specifications

Fluid: Compressed Air  
Maximum Inlet Pressure –  
Polycarbonate Bowl: 150 psig  
Maximum Temperature: 125° F

\*Metal bowl available as an accessory.

### Specifications

Fluid: Compressed Air  
Maximum Inlet Pressure –  
Polycarbonate Bowl: 150 psig  
Metal Bowl: 250 psig  
Maximum Temperature: 125° F

Manual Drain Kit ..... 1/2" - 3086

### Specifications

Fluid: Compressed Air  
Maximum Inlet Pressure –  
Polycarbonate Bowl: 150 psig  
Maximum Temperature: 125° F

**WARNING:** Units in this catalog are intended for use in industrial compressed air systems only. Do not use where pressure or temperature may exceed maximum rated operating condition. See specifications. Use metal bowl on applications where a plastic bowl might be exposed to substances that are incompatible with polycarbonate. These filters are not designed for use with fluids other than air, for non-industrial application, or for life support systems.

## Gauges

### General Purpose Pressure Gauges

Pressed steel case with shatterproof crystal and brass fitting. Used for air, water, oil, or other fluids which are compatible with brass and bronze. Available boxed or in display packs. Nominal accuracy 3-2-3%. 1 pack.

#### BOTTOM MOUNT

GAUGE Dial Diameter	Pipe Thread	Range PSI	Amflo No.
2"	1/8" NPT	0-300	1011-300
2"	1/4" NPT	0-15	1012-15
2"	1/4" NPT	0-60	1012-60
2"	1/4" NPT	0-160	1012-160
2"	1/4" NPT	0-300	1012-300
2-1/2"	1/4" NPT	0-60	1022-60
2-1/2"	1/4" NPT	0-160	1022-160
2-1/2"	1/4" NPT	0-300	1022-300

#### BACK MOUNT

GAUGE Dial Diameter	Pipe Thread	Range PSI	Amflo No.
1-1/2"	1/8" NPT	0-60	1101-60
1-1/2"	1/8" NPT	0-160	1101-160
2"	1/8" NPT	0-160	1111-160
2"	1/4" NPT	0-160	1112-160
2"	1/4" NPT	0-300	1112-300
2-1/2"	1/4" NPT	0-160	1122-160

#### VACUUM GAUGE Dial Diameter

2"	1/4" NPT	0-300	1024-30V
----	----------	-------	----------

\*Approximate flow at 90 psig inlet pressure and 5 psid pressure drop.

# Regulators, Lubricators

Gauges Sold Separately



### Miniature

Ports .....1/4"  
Flow SCFM .....15



### Compact

Ports .....1/4"-3/8"  
Flow SCFM .....1/4" 50 - 3/8" 60



### Standard

Ports .....1/2"  
Flow SCFM .....90

## Regulators

Body Size	Port Size	Without Gauge
Mini	1/4"	3100

### Parts & Accessories

Body Size	Mounting Bracket	Plastic Panel Nut	Service Kit
Mini	3076	3161	3166

### Specifications

Fluid: Compressed Air  
Maximum Inlet Pressure: 250 psig  
Maximum Temperature: 125° F  
Gauge Port: 2-1/8" NPT  
Outlet Range: 5 - 125 psi

Body Size	Port Size	Without Gauge
3/8"	1/4"	3115A
3/8"	3/8"	3125A

### Parts & Accessories

Body Size	Mounting Bracket	Panel Nut	Service Kit
3/8"	3162	3159	3167

### Specifications

Fluid: Compressed Air  
Maximum Inlet Pressure: 250 psig  
Maximum Temperature: 125° F  
Gauge Port: 1/4" NPT  
Outlet Range: 5 - 125 psi

Body Size	Port Size	Without Gauge
1/2"	1/2"	3135

### Parts & Accessories

Body Size	Mounting Bracket	Panel Nut	Service Kit
1/2"	3163	3159	3168

### Specifications

Fluid: Compressed Air  
Maximum Inlet Pressure: 250 psig  
Maximum Temperature: 125° F  
Gauge Port: 1/4" NPT  
Outlet Range: 5 - 125 psi



### Miniature

Ports .....1/4"  
Flow SCFM .....12



### Compact

Ports .....1/4"-3/8"  
Flow SCFM .....1/4" 40 - 3/8" 60

## Lubricator - Microlog

Body Size	Port Size	Poly Bowl
Mini	1/4"	3200

### Parts & Accessories

Body Size	Mounting Bracket	Poly Bowl
Mini	3076	3264

### Specifications

Fluid: Compressed air  
Maximum Inlet Pressure: 150 psig  
Maximum Temperature: 125° F

Body Size	Port Size	Poly Bowl	Metal Bowl
3/8"	1/4"	3220A	
3/8"	3/8"	3225A	3226A

### Parts & Accessories

Body Size	Poly Bowl	*Metal Bowl	Mounting Bracket	Sight Dome	Service Kit
3/8"	3285	3269	3071	3282	3170

\*Metal bowl available as an accessory.

### Specifications

Fluid: Compressed air  
Maximum Inlet Pressure: 150 psig  
Metal Bowl: 250 psig  
Maximum Temperature: 125° F

\*Approximate flow at 100 psig inlet pressure and 10 psid pressure drop.

Gauges Sold Separately



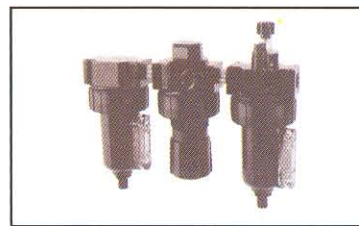
### Miniature

Ports .....1/4"  
SCFM .....15



### Compact

Ports .....1/4"-3/8"  
SCFM .....60



### Compact

Ports .....3/8"  
SCFM .....60

## Piggyback Filter/Regulator F-R-L Combination

Body Size	Port Size	Poly Bowl
Mini	1/4"	3300

### Parts & Accessories

Body Size	5 µm Element	Poly Bowl	Mounting Bracket	Panel Bowl	Reg. Repair Kit
Mini	3062	3073	3076	3161	3166

### Specifications

Fluid: Compressed Air  
Maximum Inlet Pressure: 150 psig  
Maximum Temperature: 125° F  
Gauge Port: 2-1/8" NPT (full flow)  
Outlet Range: 5 - 125 psi

Body Size	Port Size	Poly Bowl
3/8"	1/4"	3310A
3/8"	3/8"	3320A

### Parts & Accessories

Body Size	40 µm Element	5 µm Element	Poly Bowl	*Metal Bowl	Mounting Bracket
3/8"	3066	3063	3074	3269	3162

Body Size	Panel Nut	Auto Drain	Reg. Service Kit
3/8"	3159	3060	3160

\*Metal bowl available as an accessory.

### Specifications

Fluid: Compressed Air  
Maximum Inlet Pressure: 150 psig  
Maximum Temperature: 125° F  
Gauge Port: 2-1/4" NPT (full flow)  
Outlet Range: 5 - 125 psi

Body Size	Port Size	Metal Bowl	Poly Bowl
3/8"	1/4"	3410A†	
3/8"	3/8"		3421A

†Includes gauge and mounting bracket.

### Parts & Accessories

Body Size	40 µm Element	5 µm Element	Mounting Bracket	Reg. Repair Kit
3/8"	3066	3063	3071	3167

### FILTER

### LUBRICATOR

Body Size	Poly Bowl	Metal Bowl	Poly Bowl	Metal Bowl	Panel Nut
3/8"	3074	3079	3285	3269	3159

### Specifications

Fluid: Compressed Air  
Maximum Inlet Pressure –  
Transparent Bowl: 150 psig  
Metal Bowl: 250 psig  
Maximum Temperature –  
Transparent Bowl: 125°F  
Metal Bowl: 175°F  
Gauge Port: 2-1/4" NPT (full flow)  
Outlet Range: 5 - 125 psi

Gauges Sold Separately



### Miniature

Ports .....1/4"  
SCFM .....20



### Compact

Ports .....1/4"-3/8"  
SCFM .....50



### Standard

Ports ....1/4"-3/8"-1/2"-3/4"-1"  
SCFM.... 70 -150 -425

## Filters - Mini, Compact, Modular, Standard

Body Size	Port Size	Poly Bowl	Metal Bowl
Mini	1/4"	4000/56-100	4001
Auto Drain			
Mini	1/4"	4002A	

with Sight Glass

Body Size	Port Size	Poly Bowl	Metal Bowl
1/4"	1/4"	4006	4007
1/4"	3/8"	4026/56-300	4027/56-302-99

Body Size	Port Size	Poly Bowl	Metal Bowl
3/8"	1/4"	4010A-99	4011A-99
3/8"	3/8"	4020A-99/56-305	4021A-99
3/8"	3/8"		4024A-99
			(w/ auto drain)
1/2"	1/2"	4030/56-308	4031/56-310
1/2"	3/4"	4032	4040

### Hi Flow

1"	3/4"		4041*/56-313
1"	1"		4050/56-314

\*For Auto Drain order 4046  
4096 Manual Drain Kit

### Parts & Accessories

Body Size	5 µm Element	Poly Bowl	Metal Bowl	Bowl O-Ring
Mini	4062	4073	4078	4780
<small>with Sight Glass</small>				
Mounting Bracket & Panel Nut - 4160				

### Parts & Accessories

Body Size	40 µm Element	5 µm Element	Poly Bowl	Metal Bowl	Mounting Bracket
1/4"	4087	4088	4056	4057	4760
<b>Semi Auto Drain - 4086</b>					

### Parts & Accessories

Body Size	40 µm Element	5 µm Element	Poly Bowl	Metal Bowl	Mounting Bracket
3/8"	4066A-99	4063A-99	4074A-99	4079A-99	4071A-99
1/2"	4093	4092	4095	4094	4772
1"	4068	4065		4272	4090

### Specifications

Fluid: Compressed Air  
Maximum Inlet Pressure -  
Transparent Bowl: 150 psig (10.3 bar)  
Metal Bowl: 250 psig (17.2 bar)  
Maximum Temperature -  
Transparent Bowl: 125°F (52°C)  
Metal Bowl: 175°F (79°C)

### Specifications

Fluid: Compressed Air  
Maximum Inlet Pressure -  
Transparent Bowl: 150 psig (10.3 bar)  
Metal Bowl: 250 psig (17.2 bar)  
Maximum Temperature -  
Transparent Bowl: 125°F (52°C)  
Metal Bowl: 175°F (79°C)

Body Size	Bowl O-Ring	Sight Glass	Auto Drain
3/8"	4782	4277A	4070
1/2"	4783		
1"	4781	4278	4046

**Auto Drain - 4060**  
**Manual Drain - 4096**

### Specifications

Fluid: Compressed Air  
Maximum Inlet Pressure -  
Transparent Bowl: 150 psig (10.3 bar)  
Metal Bowl: 250 psig (17.2 bar)  
Maximum Temperature -  
Transparent Bowl: 125°F (52°C)  
Metal Bowl: 175°F (79°C)

Gauges Sold Separately



**Compact**  
Ports ..... 1/4"-3/8"  
Flow SCFM ..... 20



**Standard**  
Ports ..... 3/8"-1/2"  
Flow SCFM ..... 75 150



**Drip-Legs**  
Ports ..... 1/2"

### Coalescing Filters

Body Size	Port Size	Poly Bowl	Metal Bowl
1/4"	1/4"	4017	4016
1/4"	3/8"	4019	4018

Body Size	Port Size	Poly Bowl	Metal Bowl
3/8"	1/4"	4012A-99	
3/8"	3/8"	4022A-99	
1/2"	3/8"	4038/56-204	4023
1/2"	1/2"	4033/56-208	4037

Port Size	Poly Bowl	Metal Bowl
1/2"	4034	4035

### Parts & Accessories

Body Size	.01 µm Element	Poly Bowl	Metal Bowl	Mounting Bracket	Semi Auto Drain
1/4"	4089	4056	4057	4760	4086

### Parts & Accessories

Body Size	.01µm Element	Poly Bowl	Metal Bowl	Mounting Bracket	Rplc. Sight Glass	O-Ring
1/2"	4097	4095	4094	4772	4278	4783

### Parts & Accessories

Port Size	Poly Bowl	Metal Bowl	Auto Drain
1/2"	4074A-99	4079A-99	4060

### Specifications

Fluid: Compressed Air  
Maximum Inlet Pressure –  
Transparent Bowl: 150 psig (10.3 bar)  
Metal Bowl: 250 psig (17.2 bar)  
Maximum Temperature –  
Transparent Bowl: 125°F (52°C)  
Metal Bowl: 150°F (66°C)

### Specifications

Fluid: Compressed Air  
Maximum Inlet Pressure –  
Transparent Bowl: 150 psig (10.3 bar)  
Metal Bowl: 250 psig (17.2 bar)  
Maximum Temperature –  
Transparent Bowl: 125°F (52°C)  
Metal Bowl: 150°F (66°C)

### Specifications

Fluid: Compressed Air  
Maximum Inlet Pressure –  
Transparent Bowl: 150 psig (10.3 bar)  
Metal Bowl: 250 psig (17.2 bar)  
Maximum Temperature –  
Transparent Bowl: 125°F (52°C)  
Metal Bowl: 150°F (66°C)



**Miniature**  
Ports ..... 1/4"  
Flow SCFM ..... 20



**Compact**  
Ports ..... 1/4"-3/8"  
Flow SCFM ..... 50



**Standard**  
Ports ..... 1/4"-3/8"-1/2"-3/4"-1"  
SCFM ..... 70 -150 -425

### Regulators

Body Size	Port Size	Without Gauge	With Gauge
Mini	1/4"	4100/4102*	4100D/56-110

Body Size	Port Size	Without Gauge
1/4"	1/4"	4119
1/4"	3/8"	4118

Body Size	Port Size	Without Gauge
3/8"	1/4"	4115A-99/56-341-99 4116-99 w/ panel nut
3/8"	3/8"	4125A-99/56-355 4126-99 w/ panel nut
1/2"	1/2"	4135/56-344
1/2"	3/4"	4145
1"	3/4"	4141
1"	1"	4155/56-346

### Parts & Accessories

Body Size	Mounting Bracket	Panel Nut	Reg. Repair Kit	Rplc. Knob
Mini	4160	4161	4166	4790

### Parts & Accessories

Body Size	Mounting Bracket w/ Panel	Panel Nut	Reg. Repair Kit	Rplc. Knob
1/4"	4760	4763	4757	4791

### Parts & Accessories

Body Size	Mounting Bracket w/Panel	Panel Nut	Reg. Repair Kit	Rplc. Knob
3/8"	4162A-99	4778	4167A	4792
1/2"	4772	4773	4776	4793
1"	4165		4169	Non-Rplc

\* Non-Repairable Regulator

### Specifications

Fluid: Compressed Air  
Maximum Inlet Pressure: 300 psig  
Temperature Range –  
Mini: 0° to 150°F  
All Others: 0° to 175°F  
Gauge Port: 2-1/8" NPT (full flow)  
Outlet Range: 5 - 125 psi

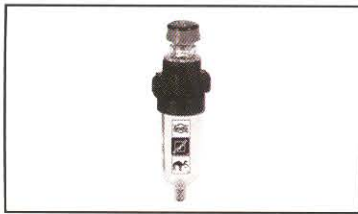
### Specifications

Fluid: Compressed Air  
Maximum Inlet Pressure: 300 psig  
Temperature Range: 0° to 150° F  
Gauge Port: 2-1/8" NPT (full flow)  
Outlet Range: 5 - 125 psi

### Specifications

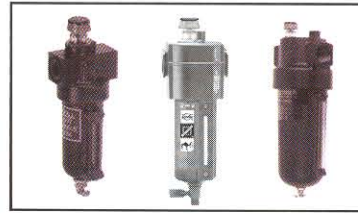
Fluid: Compressed Air  
Maximum Inlet Pressure: 300 psig  
Temperature Range: 0° to 175° F  
Gauge Port: 2-1/4" NPT (full flow)  
Outlet Range: 5 - 125 psi

Gauges Sold Separately



### Miniature

Ports .....1/4"  
SCFM.....5



### Standard

Ports .....1/4"-3/8"-1/2"-3/4"-1"  
SCFM..... 35 -150 -425

## Lubricator - Microfog

Body Size	Port Size	Poly Bowl
Mini	1/4"	4200/56-120

### Parts & Accessories

Body Size	Poly Bowl	Metal Bowl	Mount. Bracket	Seal Kit	Fill Plug	Bowl O-Ring
Mini	4264	4269	4160	4171	4794	4780

### Specifications

Fluid: Compressed Air  
Maximum Inlet Pressure –  
Transparent Bowl: 150 psig  
Metal Bowl: 250 psig  
Maximum Temperature –  
Transparent Bowl: 125°F  
Metal Bowl: 175°F



### Compact

Ports .....1/4"-3/8"  
SCFM.....50

Body Size	Port Size	Poly Bowl	Metal Bowl
3/8"	1/4"	4215A-99/56-376	4214A-99
3/8"	3/8"	4225A-99/56-374	4226A-99
1/2"	3/8"	4219	4218
1/2"	1/2"	4235/56-378	4236/56-380
1/2"	3/4"	4245	4246
1"	1"		4255

### Parts & Accessories

Body Size	Poly Bowl	Metal Bowl	Mount. Bracket	Panel Nut	Adj. Dome	Seal Kit	Fill Plug	Bowl O-Ring
3/8"	4265A-99	4269	4071A	N/A	4283		4795	4782
1/2"	4285	4286	4772	4773	4283	4284	4796	4783
1"		4272	4090	N/A	4283		4797	4781

### Specifications

Fluid: Compressed Air  
Maximum Inlet Pressure –  
Transparent Bowl: 150 psig  
Metal Bowl: 250 psig  
Maximum Temperature –  
Transparent Bowl: 125°F  
Metal Bowl: 175°F



### Standard

Ports .....1/4"-3/8"-1/2"-3/4"-1"  
SCFM..... 35 -150 -425

## Lubricator - Oil Fog

Body Size	Port Size	Poly Bowl	Metal Bowl
1/4"	1/4"	4232	4233
1/4"	3/8"	4239	4238

### Parts & Accessories

Body Size	Poly Bowl	Metal Bowl	Mount. Bracket	Panel Nut	Adj. Dome	Fill Plug
1/4"	4058	4059	4760	4763	4282	4798

### Specifications

Fluid: Compressed Air  
Maximum Inlet Pressure –  
Transparent Bowl: 150 psig  
Metal Bowl: 250 psig  
Maximum Temperature –  
Transparent Bowl: 125°F  
Metal Bowl: 175°F

Body Size	Port Size	Poly Bowl	Metal Bowl
3/8"	1/4"	4210A-99	4211A-99
3/8"	3/8"	4220A-99	4221A-99
1/2"	1/2"	4230	4231
1/2"	3/4"	4240	4241
1"	1"	4242	4250

### Parts & Accessories

Body Size	Poly Bowl	Metal Bowl	Mount. Bracket	Adj. Dome	Fill Plug	Bowl O-Ring	Drain Kit
3/8"	4265A-99	4270A-99	4071A-99	4282	4795	4782	
1/2"	4285	4286	4772	4282	4796	4783	
1"		4272	4090	4282	4797	4781	4096

### Specifications

Fluid: Compressed Air  
Maximum Inlet Pressure –  
Transparent Bowl: 150 psig  
Metal Bowl: 250 psig  
Maximum Temperature –  
Transparent Bowl: 125°F  
Metal Bowl: 175°F

Gauges Sold Separately.



### Miniature

Ports .....1/4"  
SCFM .....20



### Compact

Ports .....1/4"-3/8"  
SCFM.....50



### Standard

Ports .....1/4"-3/8"-1/2"-3/4"-1"  
SCFM..... 75 -150

## Piggyback Filter/Regulator

Body Size	Port Size	Poly Bowl
Mini	1/4"	4300/56-357

### Parts & Accessories

Body Size	40 µm Element	Poly Bowl	Metal Bowl	Mounting Bracket	Reg. Repair Kit
1/4"	4062	4073	4078*	4160	4166

Body Size	Rplc. Knob	Bowl O-Ring
1/4"	4790	4780

\*Replacement metal bowl has an auto drain and no sight glass.

### Specifications

Fluid: Compressed Air  
Maximum Inlet Pressure –  
Transparent Bowl: 150 psig  
Metal Bowl: 250 psig  
Maximum Temperature –  
Transparent Bowl: 125°F  
Metal Bowl: 175°F  
Gauge Port: 2-1/8" NPT (full flow)  
Outlet Range: 5 - 125 psi

Body Size	Port Size	Poly Bowl	Metal Bowl
1/4"	1/4"	4312	4314
1/4"	3/8"	4317	4316

### Parts & Accessories

Body Size	40 µm Element	Poly Bowl	Metal Bowl	Mounting Bracket	Reg. Repair Kit
1/4"	4087	4056	4057	4760	4757

Body Size	Rplc. Knob
1/4"	4791

### Specifications

Fluid: Compressed air  
Maximum Inlet Pressure –  
Transparent Bowl: 150 psig  
Metal Bowl: 250 psig  
Maximum Temperature –  
Transparent Bowl: 125°F  
Metal Bowl: 175°F  
Gauge Port: 2-1/8" NPT (full flow)  
Outlet Range: 5 - 125 psi

Body Size	Port Size	Poly Bowl	Metal Bowl
3/8"	1/4"	4310A-99	4311A-99
3/8"	3/8"	4320A-99	4321A-99/56-355
1/2"	1/2"	4330/56-355	4331
1/2"	3/4"	4340	4341

### Parts & Accessories

Body Size	40 µm Element	Poly Bowl	Metal Bowl	Mounting Bracket	Reg. Repair Kit
3/8"	4066A	4074A-99	4079A-99	4162A-99	4167A
1/2"	4093	4095	4094	4772	4776

Body Size	Rplc. Knob	Bowl O-Ring
3/8"	4792	4782
1/2"	4793	4783

### Specifications

Fluid: Compressed air  
Maximum Inlet Pressure –  
Transparent Bowl: 150 psig  
Metal Bowl: 250 psig  
Maximum Temperature –  
Transparent Bowl: 125°F  
Metal Bowl: 175°F  
Gauge Port: 2-1/4" NPT (full flow)  
Outlet Range: 5 - 125 psi



# Filters, Regulators, Lubricators

Gauges Sold Separately.



### Miniature

Ports .....1/4"  
SCFM.....5



### Compact

Ports .....1/4"  
SCFM.....50



### Standard

Ports ....1/4"-3/8"-1/2"-3/4"-1"  
SCFM.... 75 -150 425

## Regulator - Filter - Lubricator

Body Size	Port Size	Poly Bowl
Mini	1/4"	4405

### Parts & Accessories

Body Size	40 µm Element	5 µm Element	Reg. Repair Kit	Rplc Knob	Bowl O-Ring	Fill Plug
Mini	4066A-99	4063A-99	4166	4790	4780	4794

Body Size	FILTERS			LUBRICATOR	
	Poly Bowl	Metal Bowl	Poly Bowl	Metal Bowl	Bowl
Mini	4073	4078	4264	4269	

### Specifications

Fluid: Compressed Air  
Maximum Inlet Pressure –  
Transparent Bowl: 150 psig  
Metal Bowl: 250 psig  
Maximum Temperature –  
Transparent Bowl: 125°F  
Metal Bowl: 175°F  
Gauge Port: 2-1/8" NPT (full flow)  
Outlet Range: 5 - 125 psi

Body Size	Port Size	Poly Bowl	Metal Bowl
1/4"	1/4"	4409	4412

### Parts & Accessories

Body Size	40 µm Element	Mounting Bracket	Fill Plug	Reg. Repair Kit
1/4"	4087	4759	4798	4757

Body Size	FILTERS			LUBRICATOR	
	Poly Bowl	Metal Bowl	Poly Bowl	Metal Bowl	Bowl
1/4"	4056	4057	4058	4059	

### Specifications

Fluid: Compressed Air  
Maximum Inlet Pressure –  
Transparent Bowl: 150 psig  
Metal Bowl: 250 psig  
Maximum Temperature –  
Transparent Bowl: 125°F  
Metal Bowl: 175°F  
Gauge Port: 2-1/8" NPT (full flow)  
Outlet Range: 5 - 125 psi

Body Size	Port Size	Poly Bowl	Metal Bowl
3/8"	1/4"	4410A-99	4411A-99
3/8"	3/8"	4420A-99	4421A-99
1/2"	1/2"	4430	4431
1/2"	3/4"	4440	4441
1"	1"		4450

### Parts & Accessories

Body Size	40 µm Element	5 µm Element	Mount. Bracket	Reg. Repair Kit	Fill Plug	Rplc Knob
3/8"	4066A-99	4063A-99	4071A-99	4167A	4795	4782 4792
1/2"	4093	4092	4770	4776	4796	4783 4793
1"	4068	4065	4165	4169	4797	4781

Body Size	FILTERS			LUBRICATOR	
	Poly Bowl	Metal Bowl	Poly Bowl	Metal Bowl	Bowl
3/8"	4074A-99	4079A-99	4265A-99	4269	
1/2"	4095	4094	4285	4286	
1"		4272		4272	

### Specifications

Fluid: Compressed Air  
Maximum Inlet Pressure –  
Transparent Bowl: 150 psig  
Metal Bowl: 250 psig  
Maximum Temperature –  
Transparent Bowl: 125°F  
Metal Bowl: 175°F  
Gauge Port: 2-1/4" NPT (full flow)  
Outlet Range: 5 - 125 psi

Gauges Sold Separately.



### Compact

Ports .....1/4"  
SCFM ..... 50



### Standard

Ports .....1/4"-3/8"-1/2"-3/4"  
SCFM..... 75 -150

## Combination Units Filter - Regulator

Body Size	Port Size	Poly Bowl	Metal Bowl
1/4"	1/4"	4512	4513

### Parts & Accessories

Body Size	40 µm Element	Poly Bowl	Metal Bowl	Mounting Bracket	Reg. Repair Kit	Rplc. Knob
1/4"	4087	4056	4057	4759	4757	4791

### Specifications

Fluid: Compressed Air  
Maximum Inlet Pressure – Transparent Bowl: 150 psig  
Metal Bowl: 250 psig  
Maximum Temperature – Transparent Bowl: 125°F  
Metal Bowl: 175°F  
Gauge Port: 2-1/8" NPT (full flow)  
Outlet Range: 5 - 125 psi

Body Size	Port Size	Poly Bowl	Metal Bowl
3/8"	1/4"	4510A-99	
3/8"	3/8"	4520A-99	
1/2"	1/2"	4530	4531
1/2"	3/4"	4540	4541

### Parts & Accessories

Body Size	40 µm Element	Poly Bowl	Metal Bowl	Mounting Bracket	Reg. Repair Kit	Bowl O-Ring	Rplc. Knob
3/8"	4060A	4074A-99	4079A-99	4071A-99	4167A	4782	4792
1/2"	4093	4095	4094	4770	4776	4783	4793

### Specifications

Fluid: Compressed Air  
Maximum Inlet Pressure – Transparent Bowl: 150 psig  
Metal Bowl: 250 psig  
Maximum Temperature – Transparent Bowl: 125°F  
Metal Bowl: 175°F  
Gauge Port: 2-1/4" NPT (full flow)  
Outlet Range: 5 - 125 psi



### Compact

Ports .....1/4"  
SCFM ..... 50



### Standard

Ports .....3/8"-1/2"-3/4"  
SCFM..... 75 -150

## Combination Regulator - Lubricator

Body Size	Port Size	Poly Bowl	Metal Bowl
1/4"	1/4"	4609	4612

### Parts & Accessories

Body Size	40 µm Element	Poly Bowl	Metal Bowl	Mounting Bracket	Reg. Repair Kit	Rplc. Knob	Fill Plug
1/4"	4087	4056	4057	4759	4757	4791	4798

### Specifications

Fluid: Compressed Air  
Maximum Inlet Pressure – Transparent Bowl: 150 psig  
Metal Bowl: 250 psig  
Maximum Temperature – Transparent Bowl: 125°F  
Metal Bowl: 175°F  
Gauge Port: 2-1/8" NPT (full flow)  
Outlet Range: 5 - 125 psi

Body Size	Port Size	Poly Bowl	Metal Bowl
3/8"	3/8"	4620A-99	4621A-99
1/2"	1/2"	4630	
1/2"	3/4"	4640	4641

### Parts & Accessories

Body Size	40 µm Element	Poly Bowl	Metal Bowl	Mounting Bracket	Reg. Repair Kit	Body Size	Rplc. Knob	Bowl O-Ring
-----------	---------------	-----------	------------	------------------	-----------------	-----------	------------	-------------

3/8"	4066A-99	4265A-99	4269	4162A	4167A	3/8"	4792	4795	4782
1/2"	4093	4285	4286	4770	4776	1/2"	4793	4796	4783

### Specifications

Fluid: Compressed Air  
Maximum Inlet Pressure – Transparent Bowl: 150 psig  
Metal Bowl: 250 psig  
Maximum Temperature – Transparent Bowl: 125°F  
Metal Bowl: 175°F  
Gauge Port: 2-1/4" NPT (full flow)  
Outlet Range: 5 - 125 psi

# Filters, Regulators, Lubricators

Gauges Sold Separately.



## Compact

Ports .....1/4"-3/8"  
SCFM .....50



## Standard

Ports .....1/4"-3/8"-1/2"-3/4"  
SCFM ..... 75 -150

### Regulator/Filter - Lubricator

Body Size	Port Size	Poly Bowl	Metal Bowl
1/4"	1/4"	4709	4712

Body Size	Port Size	Poly Bowl	Metal Bowl
3/8"	1/4"	4710A-99	4711A-99
3/8"	3/8"	4720A-99	4721A-99
1/2"	1/2"	4730	4731
1/2"	3/4"	4740	4741

### Parts & Accessories

Body Size	40 µm Element	Mounting Bracket	Reg. Repair Kit	Rplc. Knob	Fill Plug
1/4"	4087	4760	4757	4791	4798

Body Size	FILTER		LUBRICATOR	
	Poly Bowl	Metal Bowl	Poly Bowl	Metal Bowl
1/4"	4056	4057	4058	4059

### Specifications

Fluid: Compressed Air  
Maximum Inlet Pressure –  
Transparent Bowl: 150 psig  
Metal Bowl: 250 psig  
Maximum Temperature –  
Transparent Bowl: 125°F  
Metal Bowl: 175°F  
Gauge Port: 2-1/8" NPT (full flow)  
Outlet Range: 5 - 125 psi

### Parts & Accessories

Port Size	40 µm Element	Mounting Bracket	Reg. Repair Kit	Rplc. Knob	Bowl O-Ring	Fill Plug
3/8"	4066A-99	4162A-99	4167A	4792	4782	4795
1/2"	4093	4770	4776	4793	4783	4796

Port Size	FILTER		LUBRICATOR	
	Poly Bowl	Metal Bowl	Poly Bowl	Metal Bowl
3/8"	4074A-99	4079A-99	4265A-99	4269
1/2"	4095	4094	4285	4286

### Specifications

Fluid: Compressed Air  
Maximum Inlet Pressure –  
Transparent Bowl: 150 psig  
Metal Bowl: 250 psig  
Maximum Temperature –  
Transparent Bowl: 125°F  
Metal Bowl: 175°F  
Gauge Port: 2-1/8" NPT (full flow)  
Outlet Range: 5 - 125 psi

## Desiccant Dryers

**APPLICATION:** Compact Desiccant Dryers have been engineered to deliver extremely dry compressed air to protect pneumatically operated equipment from the adverse effects of moisture. The combination of efficient performance and compact size make them ideally suited for applications when dry air is needed.

**Maximum working pressure 300 PSI.**

### ASSUMPTIONS:

A regular filter with automatic drain and an oil removal filter are used as a prefiltering system immediately ahead of the desiccant dryer. A regular filter may be required after the desiccant dryer to remove any desiccant dust.

**Initial Pressure = 100 PSIG**

**Ambient Temperature = 65° F**

**Relative Humidity = 80%**

**Inlet Dewpoint Temperature = 50° F** (This is a factor of ambient temperature and relative humidity).

### SPECIFICATIONS:

#### Maximum Rated Operating Conditions:

Metal Bowl with Sight Glass: 250 PSIG (17.2 Bar);  
120° F (48° C)

**FLUID:** Compressed Air Only

**PORT SIZE:** 1/2"

#### FILTER ELEMENTS:

Internal Inlet Filter - 70 Micron Porous Polypropylene

Internal Outlet Filter - 40 Micron Sintered Bronze

**RUBBER PARTS:** Buna-N

**BODY:** Head-Aluminum

**BOWL:** Steel-Internally coated to prevent rust. With polyetherimide Sight Glass.

**Color Change.** When desiccant bead has changed color from dark blue to pink the entire desiccant must be replaced or regenerated by placing it in a drying oven at 275° F until it turns dark blue again.

**WARNING:** These dryers are intended for use in compressed air systems only. Do not use where pressure or temperature may exceed maximum rated operating conditions.

Sight glass is made of a unique high chemical resistant resin. However, the sight glass will crack if exposed to solvents containing ethyl acetate, methylene dichloride, methylethylketone, M.E.K.), phenol, 1, 1, 2-trichloroethane, xylene, benzyl alcohol, dichlorobenzene as well as other harmful substances. If you have a particular concern, check with a General Electric office for further information on polyetherimide resin.

These units are not to be used on life support systems or breathing air systems. Failure to follow the recommendations contained in this warning may result in personal injury and/or property damage.

DESICCANT DRYER	DUTY CYCLE • % OF USAGE			
MODEL NUMBER	25%	33%	59%	100%
56-081	20*	15*	10*	5*

\*Estimated hours of use before desiccant needs replacement or regeneration using the below assumptions. Desiccant life will be shorter at higher temperatures and high humidity.



56-082



56-081

### ORDERING INFORMATION

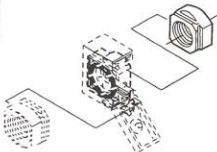
Port Size P.T.F.	Bowl Size	Flow Rate in SCFM	Order Number
1/2"	1 qt.	10	56-081
Replacement Beads One Quart			56-082

## Accessories and Components for New Modular 1/4, 3/8 and 1/2" Body Size FRLs

Dimensions in inches (mm)

### Quickmount Pipe Adapters

Port Size and Thread	AmFlo No. (1 pack)	Use with the Quickclamp to provide threaded connections to the system piping.
Compact		Each pipe adapter adds:
1/4" PTF	<b>4764</b>	.063" (15.9 mm) to the overall length of a combination unit.
3/8" PTF	<b>4765</b>	
Modular 1/2" Body Style		.71" (18 mm) to the overall length of a combination unit.
1/4" PTF	<b>4767</b>	
3/8" PTF	<b>4755</b>	
1/2" PTF	<b>4756</b>	
3/4" PTF	<b>4768</b>	



### Quickclamp Wall Mounting Bracket

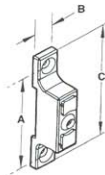
Use with the preceding Quickclamp to provide secure mounting to a wall, machine panel or other flat surface.

Compact Style **4759**

Use 3/16" (5mm) screws to mount bracket to wall.

Modular 1/2" (1mm) body size **4770**

Use 7/32" (6 mm) screws to mount bracket to wall.



	A	B	C
<b>Compact</b>	2/32(59)	0.55 (14)	2.91 (74)
<b>Modular</b>	3.25 (83)	0.95 (24)	4.0 (102)

### Quickclamp

**AmFlo Number**

**Compact Style 4761**

**Modular 1/2 Body 4769**

Maximum Pressure: 250 psig (17 bar)

Maximum Temperature:

Compact 150°F (65°C)

Modular 175°F (79°C)

Use with all compact and 1/2" modular products to provide modular installation capability. Flanges on the products slide into V grooves in the Quickclamp. Two face-sealing o-rings in the Quickclamp provide a positive seal when the clamp is closed and the captive screw is tightened.

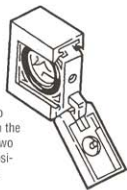
A Quickclamp adds:

#### Compact

0.26" (5.5 mm) to the overall length of a combination unit. Screw with a 5/32" (4mm) hex or a T25 Torx wrench.

#### Modular

0.54" (13.6 mm) to the overall length of a combination unit. Screw with a 5/32" (4 mm) hex or a T25 Torx wrench.



**4162A-99**

### Quickclamp and Wall Mounting Bracket

**AmFlo Number:**

**Compact Style 4762**

**Modular 1/2 Body 4771**

See preceding paragraphs for descriptions and dimensions.

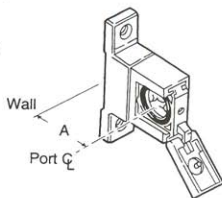
#### Compact

Use 3/16" (6mm) screws to mount bracket to wall.

#### Modular

Use 7/32" (6mm) screws to mount bracket to wall.

Compact -  
1/50" (38)  
Modular - 2.00"  
(51)



### Panel Nut

Use to panel mount new modular 1/2" reg. and 1/2" combinations.

**AmFlo Number:**

**4763**

(Plastic) Compact

**4773**

(Zinc) Modular



### Wall Mounting Bracket

Use to secure compact and 1/2" modular single units.

**AmFlo Numbers:**

Compact style **4760**

Modular 1/2" body style **4772**

Use 3/16" (5mm) screws to mount bracket to wall.

