

29-650 Tire and Tube Valves

Make more profit. The tire and tube valve module is one of our most popular displays. Products sold from this merchandiser will generate an impressive gross profit when sold at dealer net and even more at retail.

Double your sales per linear foot. Unique module is the result of careful planning and thorough product analysis. By combining outstanding product mix with our time proven merchandising techniques we are confident you will be able to double your sales per linear foot of display space.

Increase your customer base. Popular module is targeted to meet the needs of small service stations, garages, car fleets and ranchers. Retail customers have many choices based on their expertise and personal hobbies.

Total Stock Keeping Units 77

Total Facings 38

Deck facings 1

Dimensions: 24" wide by 48" high

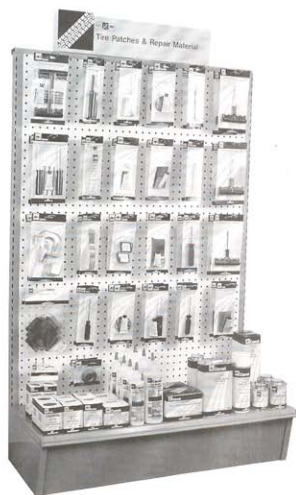
This module is shipped complete and includes all product, a scale plan-o-gram, 4" safety style pegboard hooks, die cut reorder tags and an attractive two color header with adhesive holders. Sleeve of cold patch kits on deck not included.

Camel No.

29-650

| Qty. | Camel No. | Description | Qty. | Camel No. | Description |
|------|-----------|--------------------------|------|-----------|----------------------------|
| 2 | 30-423-4 | TR423 Snap-Ins | 2 | 40-400 | Tire Gauge 10-50 PSI |
| 2 | 30-425-4 | TR425 Snap-Ins | 2 | 40-401 | Radial Gauge 10-75 PSI |
| 2 | 30-413-2 | TR413 Snap-Ins | 1 | 40-403 | Truck & Bus Ga. 10-150 PSI |
| 2 | 30-414-2 | TR414 Snap-Ins | 1 | 40-407 | Truck Tire Ga. 20-120 PSI |
| 2 | 30-415-2 | TR415 Snap-Ins | 1 | 40-399 | Low Press. Ga. 1-20 PSI |
| 2 | 30-418-2 | TR418 Snap-Ins | 2 | 40-402 | Tractor Gauge 10-50 PSI |
| 2 | 38-314-4 | 3/4" Metal Extension | 2 | 40-395 | Tread Depth Gauge |
| 2 | 38-315-4 | 1-1/4" Metal Extension | 1 | 40-406 | Truck Tire Ga. 20-120 PSI |
| 2 | 30-316-4 | Sleeves and Caps | 1 | 40-408 | Push-on Ga. 10-50 PSI |
| 2 | 30-318-4 | Sleeves and Caps | 1 | 41-466 | Valve Fishing Tool |
| 2 | 38-324-4 | 3/4" Plastic Extension | 4 | 41-067 | 4-Way Valve Core Tool |
| 2 | 38-325-4 | 1-1/4" Plastic Extension | 1 | 41-068 | Valve Core Tool |
| 2 | 38-326-4 | 1-1/2" Plastic Extension | 4 | 50-062 | Brass Ball Foot Chuck |
| 4 | 38-505 | Plastic Valve Caps | 1 | 50-065 | Dual Foot Chuck |
| 4 | 38-712-4 | Chrome Valve Caps | 1 | 50-651 | Inflator Gauge Chuck |
| 4 | 38-600-4 | Valve Caps | 2 | 41-506 | Valve-Inserting Tool |
| 2 | 30-445 | Univ. Chrome Valve | 2 | 50-621 | Clip-On Brass Ball Foot |
| 4 | 38-790-4 | Valve Cores | | 50-429 | Air Chuck Clip |

29-651 Tire Patches and Repair Materials



Make more profit. The 29-651 Tire Repair module will generate an impressive gross profit on products sold at dealer net and even more at retail.

Double your sales per linear foot. Module has been thoroughly tested to provide the very best product mix. This selection of product, when combined with our proven merchandising techniques, can increase your sales dramatically over comparable general merchandise displays.

Increase your customer base. This popular module is targeting to meet the needs of service stations and garages, farms, ranches and do-it-yourself customers who use basic tire repair products.

Total Stock Keeping Units 82

Total Facings 26

Deck Facings 13

Dimensions: 24" wide by 48" high

Includes all product, a scale plan-o-gram, 4" safety style pegboard hooks, die cut reorder tags and an attractive two color header with adhesive holders.

Camel No. Amflo No.
29-651 **NA**

| Quantity | Camel No. | Description | Quantity | Camel No. | Description |
|----------|---------------|----------------------|----------|---------------|---------------------------|
| 2 | 13-230 | Cam Cure Repair Kit | 2 | 15-163 | Radial Tire Repair Kit |
| 2 | 11-004 | Bicycle Repair Kit | 2 | 15-164 | Refill for 15-163 and 162 |
| 2 | 11-040 | Cold Patch Kit | 2 | 15-165 | Radial Repair Kit |
| 2 | 11-041 | Vinyl Repair Kit | 2 | 15-168 | Tubeless Repair Kit |
| 2 | 11-053 | Bike Tube Repair Kit | 2 | 15-169 | P-S-P Kit |
| 2 | 12-077 | Cement Tube 2 oz. | 2 | 15-172 | D-I-Y Open Eye |
| 2 | 13-125 | Mini Boot For Tubes | 2 | 15-173 | D-I-Y Closed eye |
| 2 | 13-126 | Small Boot For Tubes | 2 | 15-174 | D-I-Y Tire Probe |
| 2 | 14-130 | Tube Patch Kit | 2 | 15-224 | Super Grip Open Eye |
| 2 | 14-132 | Radial Patch Kit | 2 | 15-225 | Super Grip Probe |
| 2 | 18-260 | Buffing Cone | 2 | 15-227 | Super Grip Split Eye |
| 2 | 15-162 | T-Handle Kit | 2 | 17-235 | White Lettering Crayon |
| 2 | 17-237 | Buffer-Stitcher | 2 | 17-236 | Yellow Tire Crayon |

Deck:

4 each 12-078, 4 each 12-079, 2 each 12-086, 1 each 12-089, 1 each 12-092, 1 each 12-093, 2 each 14-137, 2 each 14-139, 2 each 12-083, 2 each 14-152, 2 each 14-153, 2 each 15-280 and 2 each 15-206

29-652 Light Industrial and Tire Hardware

Put more profit in your pocket. This module is very popular and very profitable. Earn high gross profit on every sale at regular dealer net. Higher than average profits are the normal with this Modular Merchandiser.

Watch your sales soar. Modular Merchandiser displays the most popular replacement products for use with air tools, air hose and air compressors. This focused display will out sell and out perform competitive product displays.

Increase your customer base. The booming sales of portable air compressors to do-it-yourself customers offers many sales opportunities (for you) by stocking these popular air compressor accessories.

Total Stock Keeping Units 60

Total Facings 36

Dimensions: 24" wide by 48" high

Module is shipped complete and includes all product, a scale plan-o-gram, 4" safety style pegboard hooks, die cut reorder tags and an attractive two color header with adhesive holders. Cold patch sleeve on deck not included.

Camel No. Amflo No.
29-652 **29-652A**



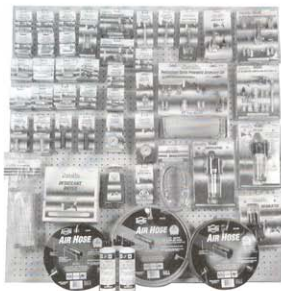
| Qty. | Camel No. | Amflo No. | Description | Qty. | Camel No. | Amflo No. | Description |
|------|---------------|-----------------|-------------------------|------|----------------|--------------|---------------------------|
| 1 | 39-900 | 701D | Tank Valve 29/32" | 1 | 56-080 | 1212D | In-Line Oiler |
| 1 | 38-906 | 700D | Tank Valve 17/32" | 4 | 610-240 | C60U | Combo Coupler® |
| 2 | 51-004 | 200K | Blow Gun Kit | 2 | 61-482 | C26U | 3/8" Coupler "E" |
| 2 | 51-122 | 200D | Standard Blow Gun | 1 | 61-484 | CP25U | 3/8" Plug "E" |
| 1 | 51-123 | 201D | Rubber Tip Blow Gun | 2 | 61-486 | C27U | 1/4" Coupler "A" |
| 1 | 51-124 | 204-30AD | Safety Blow Gun | 2 | 61-523 | C2U | 1/4" Coupler "C" |
| 1 | 51-342 | 208D | Blow Gun With Tip | 2 | 61-526 | C38U | 1/4" Coupler "B" |
| 1 | 51-537 | 220TD | Siphon Spray Gun | 2 | 61-528 | CP37U | 1/4" Plug "B" |
| 2 | 52-037 | 406D | 3/8" Hose Barb | 2 | 61-529 | CP38U | 1/4" Plug "B" |
| 1 | 52-039 | 401D | 1/4" Hose Barb | 2 | 61-530 | C38AU | 1/4" Coupler/Plug Kit "B" |
| 2 | 52-044 | 602D | 3/8" Hose Barb Splicer | 2 | 61-578 | CP21U | 1/4" Plug "D" |
| 2 | 52-045 | 502D | 5/16" Hose Barb Splicer | 2 | 61-538 | CP1U | 1/4" Plug "C" |
| 2 | 53-046 | 402D | 1/4" Hose Barb Splicer | 1 | 61-539 | CP2U | 1/4" Plug "C" |
| 2 | 52-436 | 420SD | Hose Repair Coupling | 1 | 61-550 | CP27U | 1/4" Plug "A" |
| 2 | 52-437 | 439SD | Hose Repair Coupling | 2 | 61-551 | CP28U | 1/4" Plug "A" |
| 1 | 55-124 | 25L-24BD | 24" Lead-In-Hose | 2 | 61-572 | C20AU | 1/4" Coupler/Plus Kit "D" |
| 1 | 55-461 | 4-25D | 1/4" x 25" Recoil Hose | 2 | 61-573 | C20U | 1/4" Coupler "D" |
| | | | | 2 | 61-579 | CP20U | 1/4" Plug "D" |

A=Lincoln Interchange, B=Aro Interchange, C=Automotive Standard, D and E = Industrial Interchange



Modular Merchandisers

29-653 Paint, Body and Equipment



Put more profit in your pocket. Module will generate impressive profits on PBE accessories, which can do much to improve total profits per sale.

Watch your sales soar. This module has been designed to be merchandised with spray guns, and other popular air tools. Displaying filters and regulators with couplers and plugs encourages impulse purchase decisions.

Develop new customers. Focused to serve body shops and most do-it-yourself customers. The packaging features complete directions and competitive brand interchanges to help customers quickly find what they want.

Total Stock Keeping Units 54

Total Facings 32

Deck Facings 3

Dimensions: 24" wide by 48" high

Shipped complete and includes all product, a scale plan-o-gram, 4" safety style pegboard hooks, die cut reorder tags and an attractive two color header with adhesive holders.

Camel No. *Amflo No.*
29-653 **29-653A**

Modular Merchandisers

| Qty. | Amflo No. | Description | Qty. | Amflo No. | Description |
|------|------------------|---------------------------------------|------|-----------------|--|
| 2 | C1U | 1/4" Coupler, 1/4" NPTM Type "C" | 2 | 204-30AD | Safety Blow Gun |
| 2 | C2U | 1/4" Coupler, 1/4" NPTF Type "C" | 2 | 2112D | In-Line Air Regulator 1/4" NPT, 90 PSI |
| 2 | C20U | 1/4" Coupler, 1/4" NPTF Type "D" | 2 | 217D | Pocket Blow Gun (Auto Series) |
| 2 | C21U | 1/4" Coupler, 1/4" NPTM Type "D" | 2 | 219D | Pocket Blow Gun (Ind. Series) |
| 2 | C37U | 1/4" Coupler, 1/4" NPTM Type "B" | 2 | 231D | Safety Inline Blow Gun |
| 2 | C38U | 1/4" Coupler, 1/4" NPTF Type "B" | 2 | 233D | Rubber-Tipped Inline Blow Gun |
| 2 | C60U | Combo Coupler, 1/4" NPT Female | 2 | 235D | Throttle Valve |
| 2 | C90AU | HVLP Coupler Assembly (C90 & CP91) | 2 | 23406D | Three-Way Manifold 3/8" NPTF |
| 2 | C91AU | HVLP Coupler Assembly (C91 & CP91) | 2 | 345D | 1/4" NPT x 1/4" NPS Male Fitting |
| 2 | C98AU | Hi-Flow Coupler Assembly (C98 & CP91) | 2 | 346FD | Bushing 3/8" male x 1/4" Female |
| 2 | CP1U | 1/4" Plug, 1/4" NPTM Type "C" | 2 | 364FD | Bushing 1/4" male x 3/8" Female |
| 2 | CP1BU | Brass 1/4" Plug, 1/4" NPTM Type "C" | 2 | 37L-30BD | Lead-In Hose Assembly |
| 2 | CP21U | 1/4" Plug, 1/4" NPTM Type "D" | 2 | 406D | Male Hose Barb Fitting 3/8" ID, 1/4" NPT |
| 2 | CP21BU | Brass 1/4" Plug, 1/4" NPTM Type "D" | 1 | 4020AD | 3/8" Filter |
| 2 | CP37U | 1/4" Plug, 1/4" NPTM Type "B" | 2 | 412D | 3/8" Hose Repair Kit |
| 2 | CP37BU | Brass 1/4" Plug, 1/4" NPTM Type "B" | 1 | 4125AD | 3/8" Regulator |
| 1 | CPKIT | Compressor Accessory Kit | 2 | 4-25 | Recoil Air Hose 1/4" x 25' |
| 1 | CPAKIT | Automotive Compressor Accessory Kit | 1 | 4225AD | 3/8" Micro Fog Lubricator |
| 2 | 1012-160D | 2" Dial Gauge 1/4" NPT Bottom Mount | 1 | 514-50 | Red Rubber Hose 3/8" x 50' |
| 2 | 1112-160D | 2" Dial Gauge 1/4" NPT Back Mount | 1 | 524-50A | Blue PVC Hose 3/8" x 50' |
| 3 | 1220-1 | Air Tool Oil (1 pint) | 1 | 56-081 | Desiccant Dryer 1/2" NPT |
| 1 | 20IKIT | Professional Pneumatic Accessory Kit | 1 | 56-082 | Replacement Desiccant beads (1 qt.) |
| 2 | 200K | Blow Gun Kit | 1 | 576-50A | Orange Day-Glow Hose 3/8" x 50' |

29-655 Heavy Duty Tire Repair

Put more profit in your pocket. The 29-655 Heavy-Duty Tire Repair and 29-656 Tire and Tube Valves mini-module will generate solid gross profits on products with few competitors who merchandise.

Increase related sales. Whether you sell tires or tire repair products, these mini-modules can increase related item sales for you.

Add new customers. The 29-655 and 29-656 modules meet the needs of truck stops, owner operators, fleet shops, farmers and ranchers.

Total Stock Keeping Units 15

Total Facings 10

Deck Facings 3

Dimensions: 24" wide by 24" high

Module is shipped complete and includes all product, a scale plan-o-gram, 4" safety style pegboard hooks, die cut reorder tags and an attractive two color header with adhesive holders.

| Quantity | Camel No. | Description | Quantity | Camel No. | Description |
|----------|---------------|--------------------------|----------|---------------|---------------------------|
| 1 | 15-240 | Nail Hole Repair Kit | 1 | 15-282 | Truck Tire Repair Kit |
| 1 | 15-231 | Steel T-Handle Tool | 1 | 17-244 | Heavy-Duty Stitcher |
| 1 | 15-232 | Spiral Cement Tool | 1 | 15-281 | Radial Truck Tire Inserts |
| 1 | 15-249 | 8" Open Eye Needle | 2 | 18-259 | Tire Buffer Cone |
| 1 | 13-300 | Radial Repair Assortment | 1 | 17-270 | Inner-Liner Tire Scraper |
| 1 | 13-451 | Small Univ. Patch (30) | 2 | 12-087 | Cam-Cure Cement 1/2 pt. |
| 1 | 13-452 | Medium Univ. Patch (20) | | | |

29-656 Heavy Duty Tire and Tube Valves

Total Stock Keeping Units 16

Total Facings 10

Deck Facing 1

Dimensions 24" wide by 24" high

| Quantity | Camel No. | Description | Quantity | Camel No. | Description |
|----------|-----------------|-------------------------|----------|-----------------|-----------------------------------|
| 1 | 32-200-2 | TR500 Clamp-In 2" | 2 | 38-432-2 | Truck Extension 6" |
| 1 | 32-202-2 | TR571 Clamp-In 3-3/8" | 2 | 38-436-2 | Truck Extension 5" |
| 1 | 32-204-2 | TR573 Clamp-In 4-3/8" | 1 | 40-409 | Dial Pressure Gauge with 12" Hose |
| 1 | 32-310-2 | TR510 Clamp-In 5-1/2" | 2 | 40-403 | Truck and Bus Gauge |
| 2 | 38-430-2 | Truck Extension 3-1/16" | 1 | 55-465 | Glad-Hand Kit |
| 2 | 50-065 | Dual Foot Chuck | | | |



29-201ATV Tire Repair and Maintenance

Put more profit in your pocket. Module is very popular and very profitable. Earn high gross profit on every sale at regular dealer net. Higher than average profits are the normal with this Modular Merchandiser.

Watch your sales soar. Merchandiser displays the most popular replacement products for use with air tools, air hose and air compressors. This focused display will out sell and out perform competitive product displays.

Increase your customer base. The booming sales of portable air compressors to do-it-yourself customers offers many sales opportunities (for you) by stocking these popular air compressor accessories.

Total Stock Keeping Units 34

Total Facings 19

Dimensions: 24" wide by 48" high

Module is shipped complete and includes all product, a scale planogram, 4" safety style pegboard hooks, die cut reorder tags and an attractive two color header with adhesive holders. Cold patch sleeve on deck not included.

Camel No.
29-201ATV

| <i>Qty.</i> | <i>Camel No.</i> | <i>Description</i> |
|-------------|------------------|----------------------------------|
| 2 | 40-399ATV | Low Pressure Pencil Gauge |
| 2 | 40-416ATV | Low Pressure Dial Gauge |
| 2 | 40-423ATV | Deluxe Low Pressure Dial Gauge |
| 2 | 40-401ATV | High Pressure Pencil Gauge |
| 2 | 15-162ATV | Off Road Repair Kit |
| 2 | 15-262ATV | Emergency Off Road Repair Kit |
| 2 | 15-161ATV | Refill for 15-162ATV & 15-262ATV |
| 2 | 40-440ATV | High Pressure Dial Gauge |
| 2 | 12-078ATV | 8 oz. Tire Sealant |
| 2 | 12-079ATV | 16 oz. Tire Sealant |
| 2 | 40-409ATV | Deluxe High Pressure Dial Gauge |
| 2 | 38-712ATV | Chrome Valve Caps |
| 2 | 30-430ATV | (TR-430) Clamp-in Valves |
| 2 | 15-098ATV | Air-up Kit |
| 2 | 15-099ATV | Air-up refills |
| 1 | 15-289ATV | Premium Off Road Kit |
| 3 | 12-094ATV | 20 oz. Camel Jack |

29-311 Compressor Accessories / 29-312 Air Line Accessories

Put more profit in your pocket. This module will generate impressive profits on PBE accessories, which can do much to improve total profits per sale.

Watch your sales soar. Module has been designed to be merchandised with spray guns, and other popular air tools. Displaying filters and regulators with couplers and plugs encourages impulse purchase decisions.

Develop new customers. Focused to serve body shops and most do-it-yourself customers. The packaging features complete directions and competitive brand interchanges to help customers quickly find what they want.

Total Stock Keeping Units **29-311** 20 **29-312** 24

Total Facings 14 13

Deck Facings 2

Dimensions: 24" wide by 60" high

Shipped complete and includes all product, a scale plan-o-gram, 4" safety style pegboard hooks, die cut reorder tags and an attractive two color header with adhesive holders.



| | |
|---------------|---------------|
| <i>Left</i> | <i>Right</i> |
| 29-311 | 29-312 |

| Qty. | Camel/Amflo No. | Description | Qty. | Camel/Amflo No. | Description |
|--------------------------------------|------------------|---|------------------------------------|-----------------|-------------------------------------|
| COMPRESSOR ACCESSORIES 29-311 | | | AIR LINE ACCESSORIES 29-312 | | |
| 1 | 4-25D | 1/4" X 25' Nylon Recoil Hose | 1 | 24-20D | 1/4" x 20' Polyurethane Recoil Hose |
| 2 | 344D | 1/4" NPT Male Pipe Coupling | 2 | 51-004 | Deluxe 5 Piece Blow Gun Kit |
| 2 | 346FD | 3/8" Male NPT x 1/4" Female NPT Bushing Adapter | 2 | 51-005 | High Flow Trigger Type Blow Gun |
| 2 | 364FD | 1/4" Male NPT x 3/8" Female NPT Bushing Adapter | 2 | 51-008 | Blow Gun Kit |
| 2 | 366D | 3/8" NPT Male Pipe Coupling | 2 | 51-122 | Standard Blow Gun |
| 2 | 410D | 1/4" Hose Repair Kit | 2 | 51-123 | Rubber Tip Blow Gun |
| 2 | 412D | 3/8" Hose Repair Kit | 2 | 61-002 | 1/4" Automotive Coupler/Plug Kit |
| 1 | 1220-1 | Air Tool Oil | 2 | 61-003 | 1/4" Industrial Coupler/Plug Kit |
| 1 | 1420 | Air Compressor Oil | 2 | C20BKIT | 1/4" Brass Coupler/Plug Kit |
| 1 | 4020AD | 3/8" NPT Filter | 2 | 61-240 | 1/4" 3-Way Quick Coupler |
| 1 | 4125AD | 3/8" NPT Regulator | 2 | 61-530 | 1/4" NPT Coupler & Plug |
| 1 | 4225AD | 3/8" NPT Lubricator | 2 | 61-805 | 1/4" Automotive Accessory Kit |
| 1 | 4300AD | Mini-Filter/Regulator | 1 | 576-50A | 3/8" x 50' Day-Glo Yellow Hose |
| 1 | 1112-160D | 2" Dial Gauge | | | |

Modular Merchandisers

29-313 Tire Hardware / 29-314 Tire Repair



| | |
|---------------|---------------|
| <i>Left</i> | <i>Right</i> |
| 29-313 | 29-314 |

Put more profit in your pocket. Module will generate impressive profits on PBE accessories, which can do much to improve total profits per sale.

Watch your sales soar. This module has been designed to be merchandised with spray guns, and other popular air tools. Displaying filters and regulators with couplers and plugs encourages impulse purchase decisions.

Develop new customers. Focused to serve body shops and most do-it-yourself customers. The packaging features complete directions and competitive brand interchanges to help customers quickly find what they want.

| | | |
|---------------------------|---------------|---------------|
| Total Stock Keeping Units | 29-313 | 29-314 |
| | 40 | 36 |

| | | |
|---------------|----|----|
| Total Facings | 20 | 23 |
|---------------|----|----|

| | | |
|--------------|---|---|
| Deck Facings | 1 | 8 |
|--------------|---|---|

Dimensions: 34" wide by 60" high

Shipped complete and includes all product, a scale plan-o-gram, 4" safety style pegboard hooks, die cut reorder tags and an attractive two color header with adhesive holders.

| <i>Qty.</i> | <i>Camel No.</i> | <i>Description</i> | <i>Qty.</i> | <i>Camel No.</i> | <i>Description</i> |
|-----------------------------|------------------|----------------------------------|---------------------------|------------------|---|
| TIRE HARDWARE 29-313 | | | TIRE REPAIR 29-314 | | |
| 2 | 30-413-2 | 1 1/4" Snap-In-Tire Valves | 2 | 12-070 | Universal Cement/Liquid Buffer |
| 2 | 30-316-2 | 1 1/4" Chrome Sleeves and Caps | 1 | 12-078 | Tire Sealant 8 oz. |
| 2 | 30-418-2 | 2" Snap-In-Tire Valves | 1 | 12-079 | Tire Sealant 16 oz. |
| 2 | 30-423-4 | 2 1/2" Snap-In Tire Valves | 1 | 12-085 | Universal Cement 4 oz. |
| 2 | 30-425-4 | 2" Snap-In Tire Valves | 1 | 12-086 | Universal Cement 8 oz. |
| 2 | 38-315-4 | 1 1/4" Chrome Plated Extensions | 2 | 13-230 | Cam-Cure(Universal Repair Kit |
| 2 | 38-324-4 | 3/8" Black Plastic Extensions | 2 | 14-130 | Rubber Repair Kit |
| 2 | 38-326-4 | 1 1/2" Black Plastic Extensions | 2 | 14-132 | Radial Repair Kit |
| 2 | 38-505 | Tire Valve Caps | 2 | 14-134 | Foilback Repair Kit |
| 2 | 38-712-4 | High Performance Valve Caps | 1 | 14-137 | Small Round Radial Patches |
| 2 | 38-790-4 | Standard Valve Cores | 1 | 14-152 | Small Round Chembond Patches |
| 2 | 40-395 | Tire Tread Depth Gauge | 1 | 14-153 | Medium Round Chembond Patches |
| 2 | 40-400 | Supreme Radial Tire Pencil Gauge | 2 | 15-161 | Refill Kit for 15-162 |
| 2 | 40-403 | Truck & Bus Tire Pencil Gauge | 2 | 15-162 | T-Handle Radial Repair Kit |
| 2 | 40-411 | High Pressure Bike Pencil Gauge | 2 | 15-163 | Steel Belted Radial Tire Repair Kit |
| 2 | 40-440 | Dial Gauge 0-100 PSI | 2 | 15-227 | Super Grip Split Eye Needle |
| 2 | 40-575 | Air Line Inflator Gauge | 1 | 15-280 | Heavy Duty Tubeless Tire Repairs |
| 2 | 50-065 | 1/4" NPT Female Dual Foot Chuck | 2 | 15-298 | Plug-N-Patch Repair Kit |
| 2 | 59-651 | Dual Foot Chuck | 2 | 17-235 | Tire Lettering Stick (White) |
| 2 | 55-124 | Swivel 1/4" NPT Lead-In Hose | 2 | 17-237 | Buffer Stitcher |
| | | | 2 | 41-067 | 4-Way Tire Valve Repair Tool |
| | | | 2 | 50-621 | Clip On Ball Foot Chuck 1/4" NPT Female |
| | | | 2 | 50-062 | Ball Foot Chuck 1/4" NPT Female |

29-315 Farm & Ranch / 29-316 All Terrain Vehicle

Put more profit in your pocket. This module will generate impressive profits on PBE accessories, which can do much to improve total profits per sale.

Watch your sales soar. This module has been designed to be merchandised with spray guns, and other popular air tools. Displaying filters and regulators with couplers and plugs encourages impulse purchase decisions.

Develop new customers. This module is focused to serve body shops and most do-it-yourself customers. The packaging features complete directions and competitive brand interchanges to help customers quickly find what they want.

Total Stock Keeping Units **29-315** **29-316**
27 26

Total Facings 15 13

Deck Facings 6 3

Dimensions: 34" wide by 60" high

Shipped complete and includes all product, a scale plan-o-gram, 4" safety style pegboard hooks, die cut reorder tags and an attractive two color header with adhesive holders.



Left *Right*
29-315 **29-316**

| Qty. | Camel No. | Description |
|------------------------------|---------------|---|
| FARM AND RANCH 29-315 | | |
| 1 | 12-075 | Boot Cement Type |
| 1 | 12-086 | Universal Cement Type C |
| 1 | 12-087 | Cam-Cure Heavy Duty Vulcanizing Cement |
| 3 | 13-126 | Tube Type Tire Boot 4 1/2" x 4 1/4" |
| 3 | 13-127 | Tube Type Tire Boot 6" x 6" |
| 3 | 13-128 | Tube Type Tire Boot 7 3/8" x 7 3/8" 3 ply |
| 2 | 13-300 | Repair Units Radial Ply Tires |
| 1 | 14-140 | Radial Patches Reinforced |
| 1 | 14-154 | Chembond(Large Round Patches |
| 2 | 15-227 | Super-Grip Split Eye Needle |
| 1 | 15-281 | Heavy Duty Brown String Inserts 7" |
| 2 | 15-282 | Heavy Duty Truck Tubeless Tire Repair Kit |
| 2 | 17-236 | Tire Crayon |
| 2 | 17-244 | Heavy Duty Stitcher |
| 2 | 40-402 | Tractor Air/Liquid Tire Gauge 10 - 50 PSI |

| Qty. | Camel No. | Description |
|-----------------------------------|------------------|--|
| ALL TERRAIN VEHICLE 29-316 | | |
| 2 | 12-079ATV | Tire Sealant 16 oz. |
| 3 | 12-094ATV | Camel Jack Inflator & Sealer |
| 2 | 15-098ATV | Air-up Kit |
| 2 | 15-099ATV | Refills for 15-098 |
| 2 | 15-161ATV | Refill for 15-162 & 15-262 |
| 2 | 15-162ATV | T-Handle Off-Road Tire Repair Kit |
| 2 | 15-262ATV | Emergency Off-Road Tire Repair Kit |
| 2 | 30-430ATV | TR 430 Tubeless Clamp-in Motorcycle Valves |
| 2 | 38-712ATV | High Heat Chrome Valve Caps |
| 2 | 40-399ATV | Low Pressure Dial Gauge 1 - 30 PSI |
| 2 | 40-401ATV | Pocket Tire Gauge 10 - 75 PSI |
| 2 | 40-416ATV | Low Pressure Dial Gauge 1 - 30 PSI |
| 2 | 40-423ATV | Deluxe Low Pressure Dial Gauge 1 - 15 PSI |